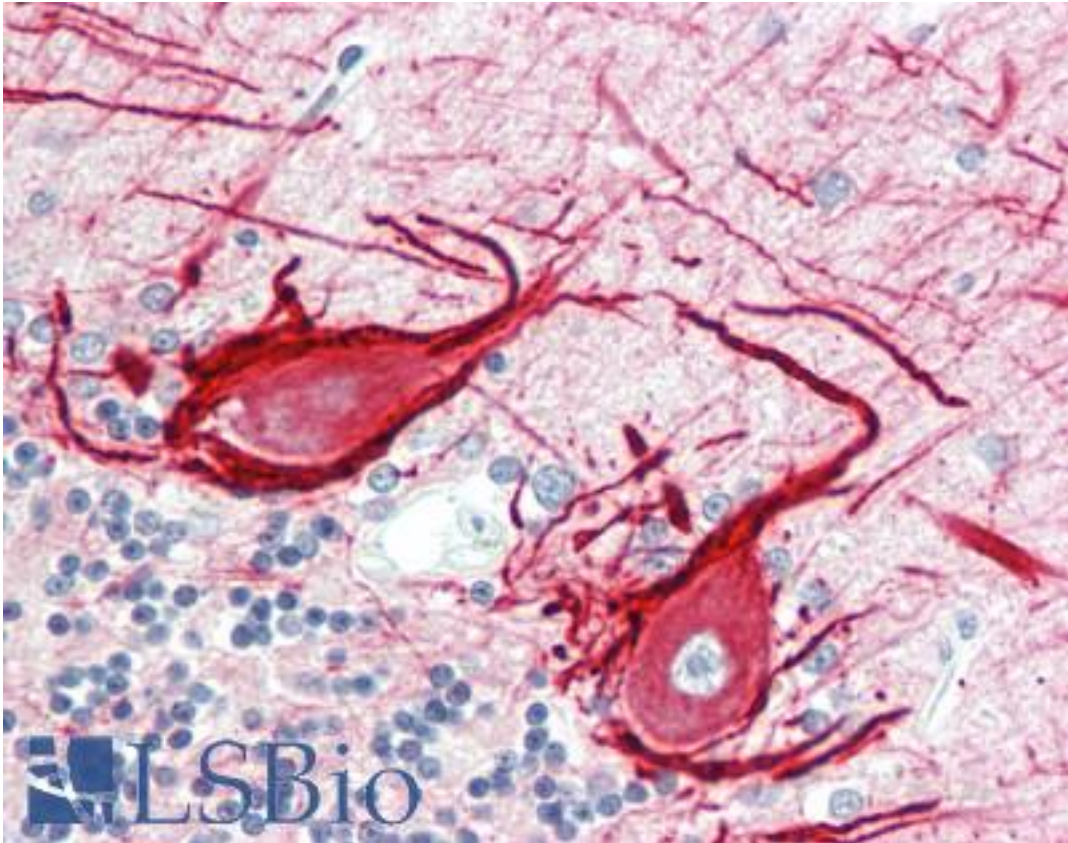


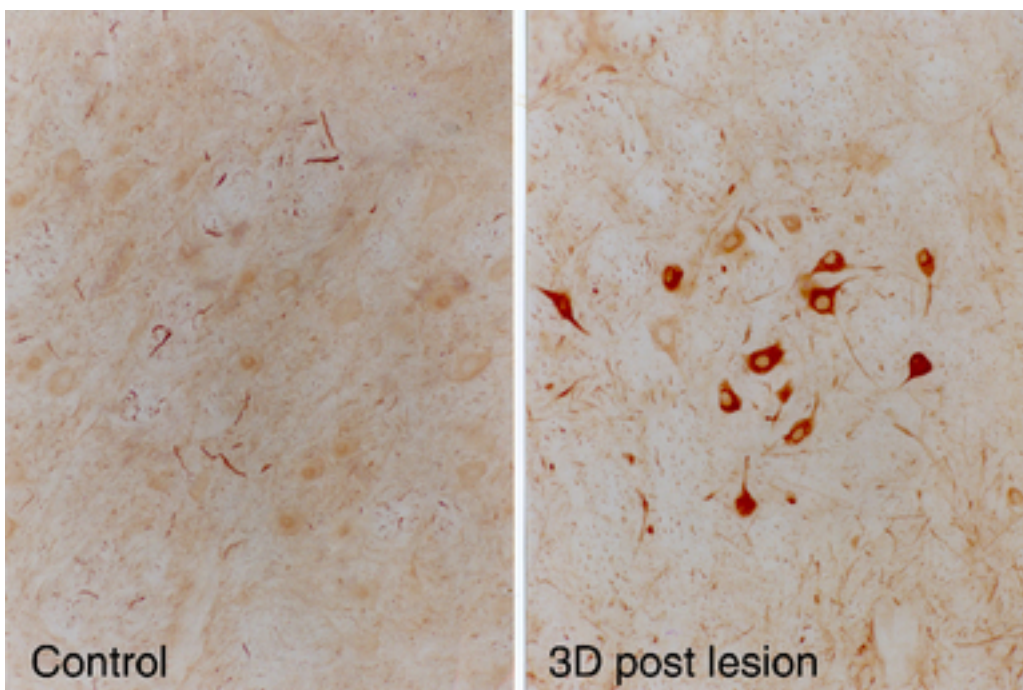
INA / Alpha Internexin Mouse anti-Human Monoclonal (2E3) Antibody - LS-B10381 - LSBio	
<b>CatalogID:</b>	LS-B10381
<b>Validation:</b>	This antibody replaces catalog number LS-C204545. It has been validated for use in the following assays: IHC-P.
<b>Target:</b>	internexin neuronal intermediate filament protein, alpha (INA)
<b>Synonyms:</b>	INA Antibody, 66 kDa neurofilament protein Antibody, Alpha Internexin Antibody, Alpha-internexin Antibody, Alpha-Inx Antibody, NEF5 Antibody, Neurofilament 5 Antibody, Neurofilament-66 Antibody, NF-66 Antibody, TXBP-1 Antibody, Neurofilament 5 (66kD) Antibody
<b>Host</b>	INA antibody was produced in Mouse
<b>Clonality:</b>	Monoclonal
<b>Isotype:</b>	IgG1
<b>Clone Name:</b>	2E3
<b>Immunogen Species:</b>	INA / Alpha Internexin antibody was raised against Human
<b>Antigen Type:</b>	Recombinant protein
<b>Immunogen:</b>	INA / Alpha Internexin antibody was raised against recombinant rat alpha internexin.
<b>Specificity:</b>	Clone 2E3 reacts with human alpha-internexin and with this protein in all mammalian species tested to date.
<b>Reactivity:</b>	Human
<b>Purification:</b>	Tissue culture supernatant
<b>Presentation:</b>	Tissue culture supernatant
<b>Recommended Storage:</b>	+4°C or -20°C, Avoid repeated freezing and thawing.
<b>Usage Summary:</b>	For immunofluorescence try dilutions of 1:500, for immunohistochemistry with ABC or other enzymatic amplification procedures try 1:5000. For western blots try 1:10000 dilutions.
<b>Uses:</b>	IHC (1:5000), IHC - Paraffin (1:50), Immunofluorescence (1:500), Western blot (1:10000) (Optimal dilution to be determined by the researcher)
<b>Size:</b>	100 µl

**Immunohistochemistry Image:**



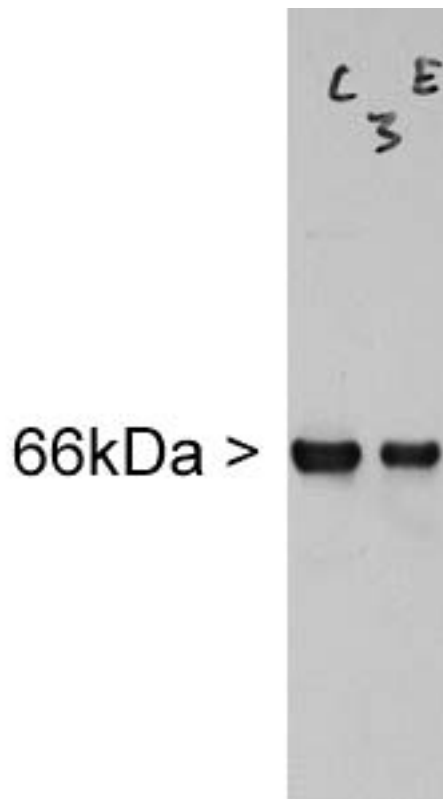
Human Brain, Cerebellum: Formalin-Fixed, Paraffin-Embedded (FFPE)

**Immunohistochemistry Image:**



Rat facial nucleus before (left) and after (right) facial nerve lesion. Note the profound upregulation of alpha-internexin in the facial nucleus motor neurons.

**Western Blot Image:**



Blot of homogenate of rat facial nucleus incubated with INA / Alpha Internexin antibody, which reveals a single clean band running at ~66 kDa.

**Requested From:**

Japan

Laboratory Reagent For In Vitro Research Use Only

Not for resale without prior written consent from LifeSpan BioSciences, Inc.

Created on 9/23/2014

© 2014 LifeSpan BioSciences