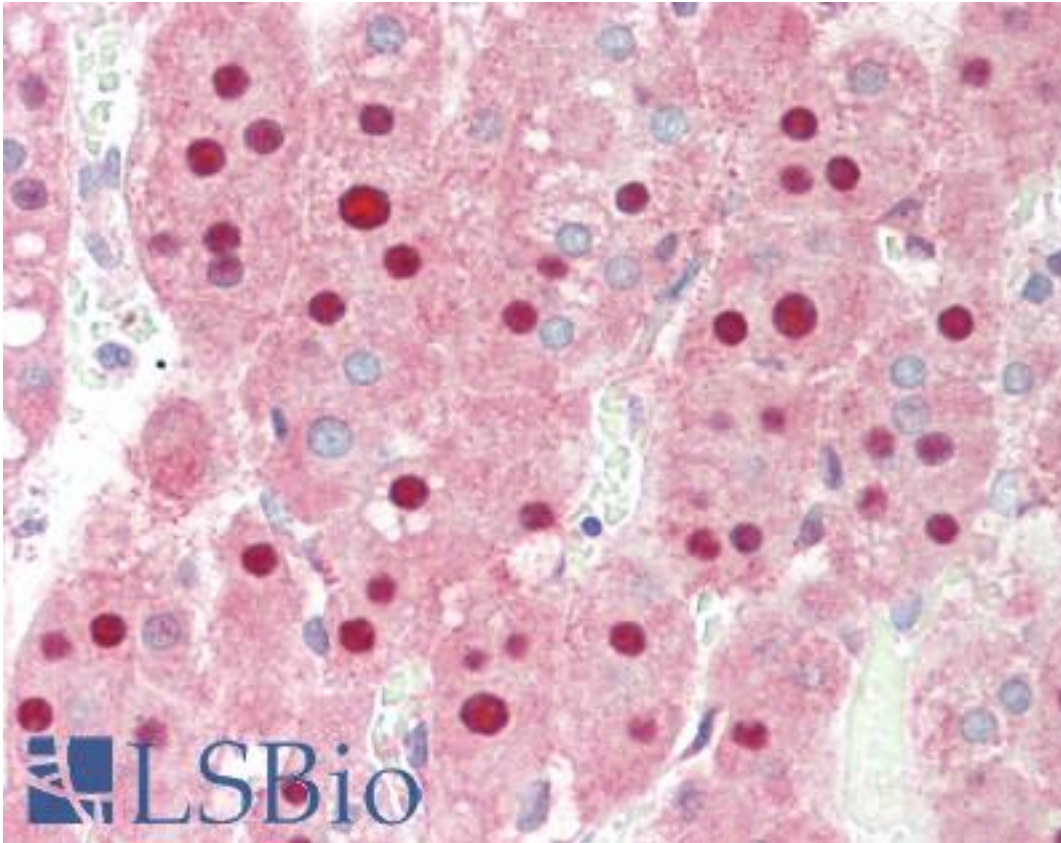


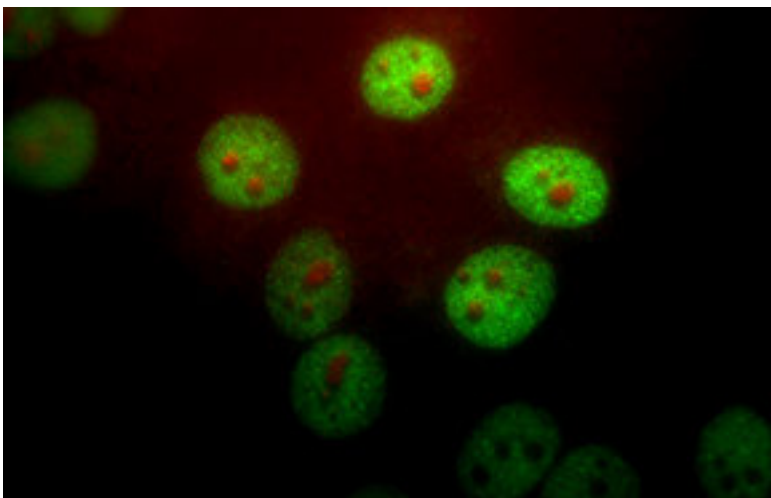
PIN1 Chicken anti-Human Polyclonal Antibody - LS-B10377 - LSBio	
CatalogID:	LS-B10377
Validation:	This antibody replaces catalog number LS-C204600. It has been validated for use in the following assays: IHC-P.
Target:	peptidylprolyl cis/trans isomerase, NIMA-interacting 1 (PIN1)
Synonyms:	PIN1 Antibody, DOD Antibody, PPlase Pin1 Antibody, Rotamase Pin1 Antibody
Host	PIN1 antibody was produced in Chicken
Clonality:	Polyclonal
Isotype:	IgY
Immunogen Species:	PIN1 antibody was raised against Human
Immunogen:	PIN1 antibody was raised against recombinant full length Pin-1 purified from E. coli.
Specificity:	Human PIN1
Reactivity:	Human
Purification:	Purified
Presentation:	10 mM sodium azide.
Recommended Storage:	+4°C or -20°C, Avoid repeated freezing and thawing.
Usage Summary:	Try at dilutions of 1:500-1:1000 for immunofluorescence, and 1:5000 for ABC or other enzyme linked immunocytochemical procedures. For western blots try at 1:10000.
Uses:	IHC - Paraffin (1:500), ICC (1:5000), Immunofluorescence (1:500 - 1:1000), Western blot (1:10000) (Optimal dilution to be determined by the researcher)
Size:	50 µl

Immunohistochemistry Image:



Human Adrenal: Formalin-Fixed, Paraffin-Embedded (FFPE)

Immunocytochemistry Image:



HeLa cells stained with PIN1 antibody (1:1,000 dilution, green) and monoclonal to fibrillarin, 38F3 (red). Pin-1 stains the nuclear matrix and, much more faintly, the cytoplasm. The fibrillarin antibody marks nucleoli.

Western Blot Image:



Western blot of whole HeLa cell homogenate stained with PIN1 antibody, at dilution of 1:10,000. A prominent band running with an apparent SDS-PAGE molecular weight of ~21kDa corresponds to Pin1.

Requested From:

Japan

Laboratory Reagent For In Vitro Research Use Only

Not for resale without prior written consent from LifeSpan BioSciences, Inc.

Created on 9/23/2014

© 2014 LifeSpan BioSciences