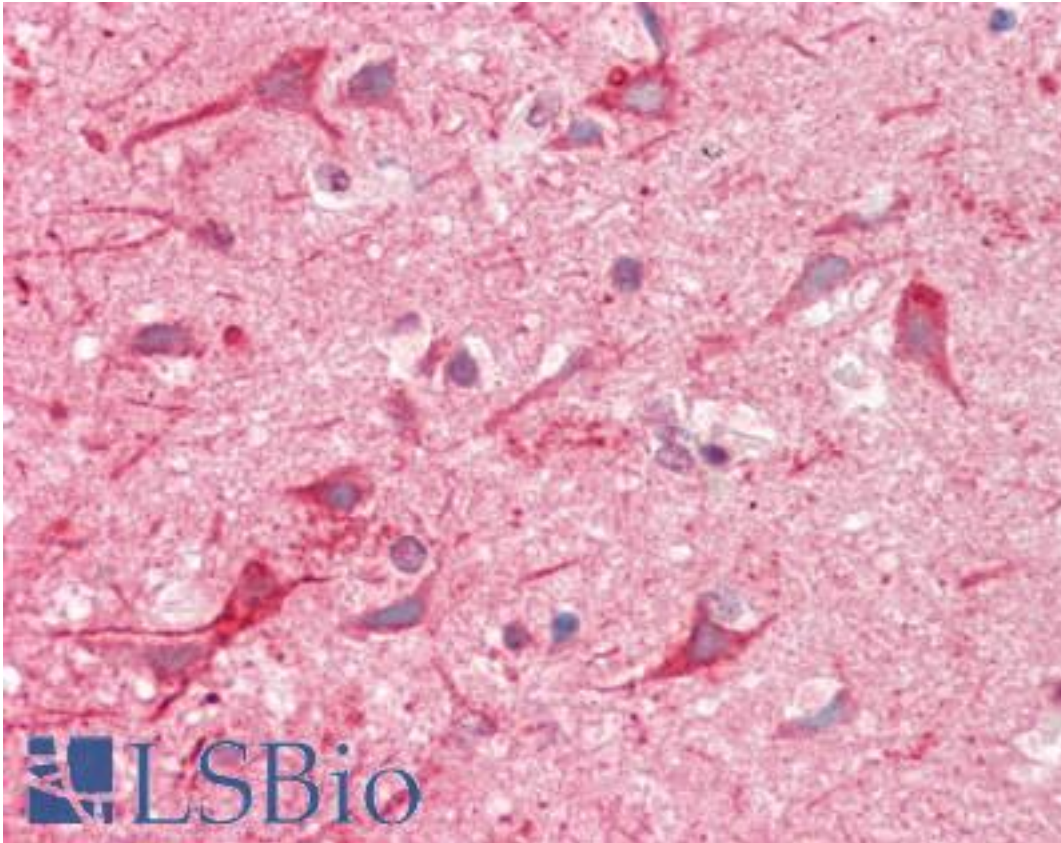


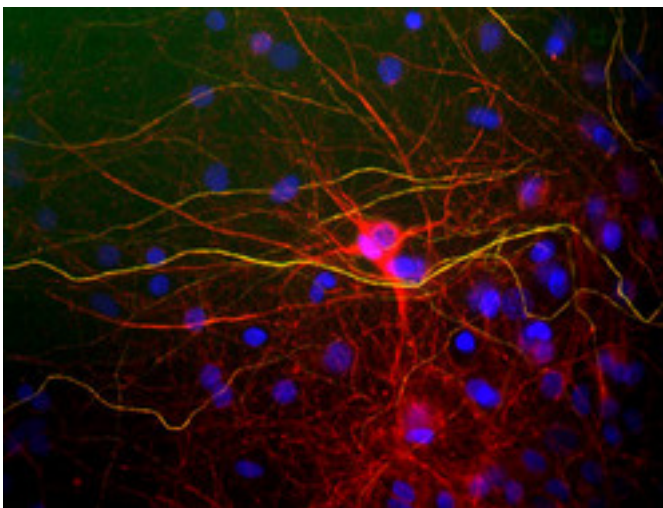
NF-L / NEFL Chicken anti-Human Polyclonal Antibody - LS-B10376 - LSBio	
<b>CatalogID:</b>	LS-B10376
<b>Validation:</b>	This antibody replaces catalog number LS-C204559. It has been validated for use in the following assays: IHC-P.
<b>Target:</b>	neurofilament, light polypeptide (NEFL)
<b>Synonyms:</b>	NEFL Antibody, 68 kDa neurofilament protein Antibody, CMT1F Antibody, CMT2E Antibody, NF68 Antibody, NF-L Antibody, NFL Antibody, Neurofilament subunit NF-L Antibody
<b>Host</b>	NEFL antibody was produced in Chicken
<b>Clonality:</b>	Polyclonal
<b>Isotype:</b>	IgY
<b>Immunogen Species:</b>	NF-L / NEFL antibody was raised against Human
<b>Antigen Type:</b>	Purified protein
<b>Immunogen:</b>	NF-L / NEFL antibody was raised against to raise this antibody bovine intermediate filaments were prepared from spinal cords by the method of Delacourte et al. and the cytoskeletal material was dissolved in 6M urea. Individual neurofilament subunits were purified by ion exchange chromatography on DEAE cellulose followed by preparative gel electrophoresis. To ensure greater specificity for NF-L, animals were boosted with recombinant mouse NF-L purified from bacteria.
<b>Specificity:</b>	Human NF-L / NEFL
<b>Reactivity:</b>	Human
<b>Purification:</b>	Purified
<b>Presentation:</b>	10 mM sodium azide.
<b>Recommended Storage:</b>	+4°C or -20°C, Avoid repeated freezing and thawing.
<b>Usage Summary:</b>	The IgY solution can be used at dilutions of at least 1:5000 in immunofluorescence experiments. In western blotting using chemiluminescence it can be used at dilutions of 1:10000 or lower.
<b>Uses:</b>	IHC - Paraffin (1:500), ICC (1:5000), Immunofluorescence (1:5000), Western blot (1:10000) (Optimal dilution to be determined by the researcher)
<b>Size:</b>	50 µl

**Immunohistochemistry Image:**



Human Brain, Cortex: Formalin-Fixed, Paraffin-Embedded (FFPE)

**Immunocytochemistry Image:**



View of mixed neuron/glia cultures stained with NF-L / NEFL antibody (red) and rabbit antibody to phosphorylated NF-H (green). The NF-L protein is assembled into neurofilaments which are found throughout the axons, dendrites and perikarya of these cells. In contrast the phosphorylated NF-H has a much more restricted expression pattern, being found only in developed axonal neurofilaments. Since both proteins are found in neurofilaments, the red and green patterns overlap, so that neurofilaments containing NF-L and phosphorylated NF-H appear yellowish. In contrast neurofilaments containing only NF-L appear red.

**Western Blot Image:**



Western blots of whole protein extracts of rat spinal cord (lane 1), brain stem (lane 2), cerebellum (lane 3) and cerebral cortex (lane 4).

**Requested From:**

Japan

Laboratory Reagent For In Vitro Research Use Only

Not for resale without prior written consent from LifeSpan BioSciences, Inc.

Created on 9/23/2014

© 2014 LifeSpan BioSciences