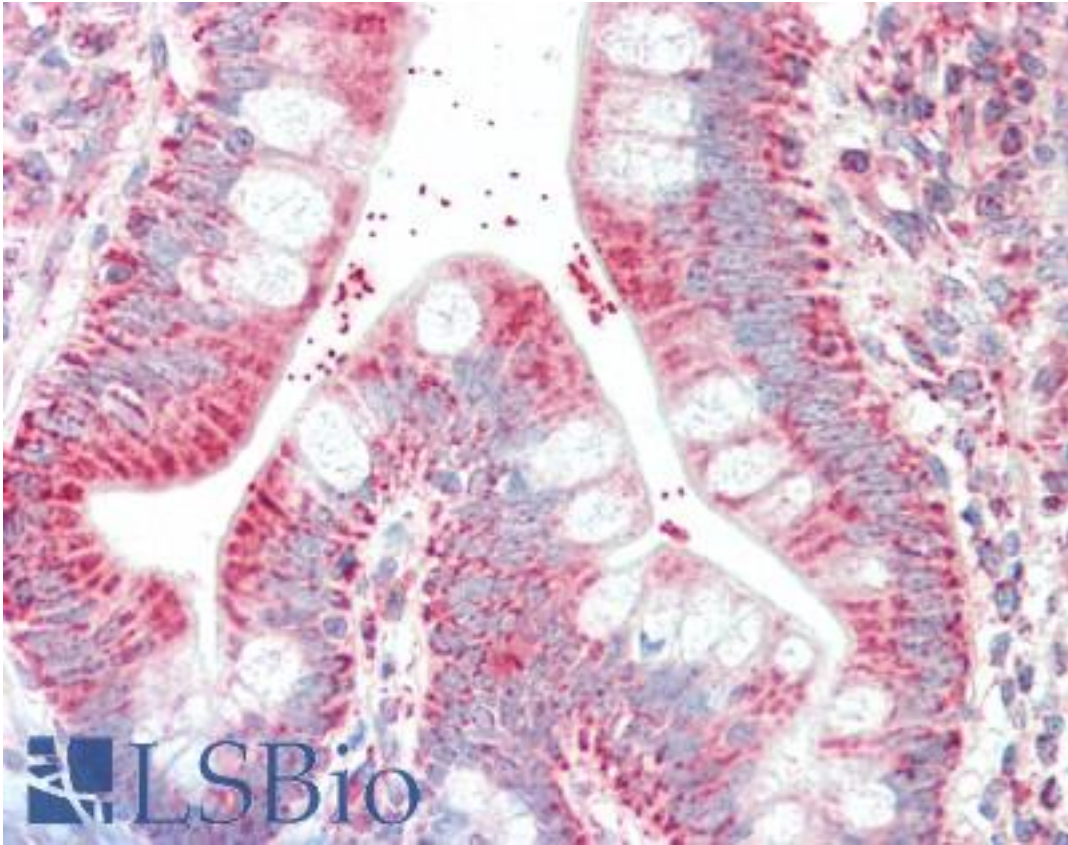


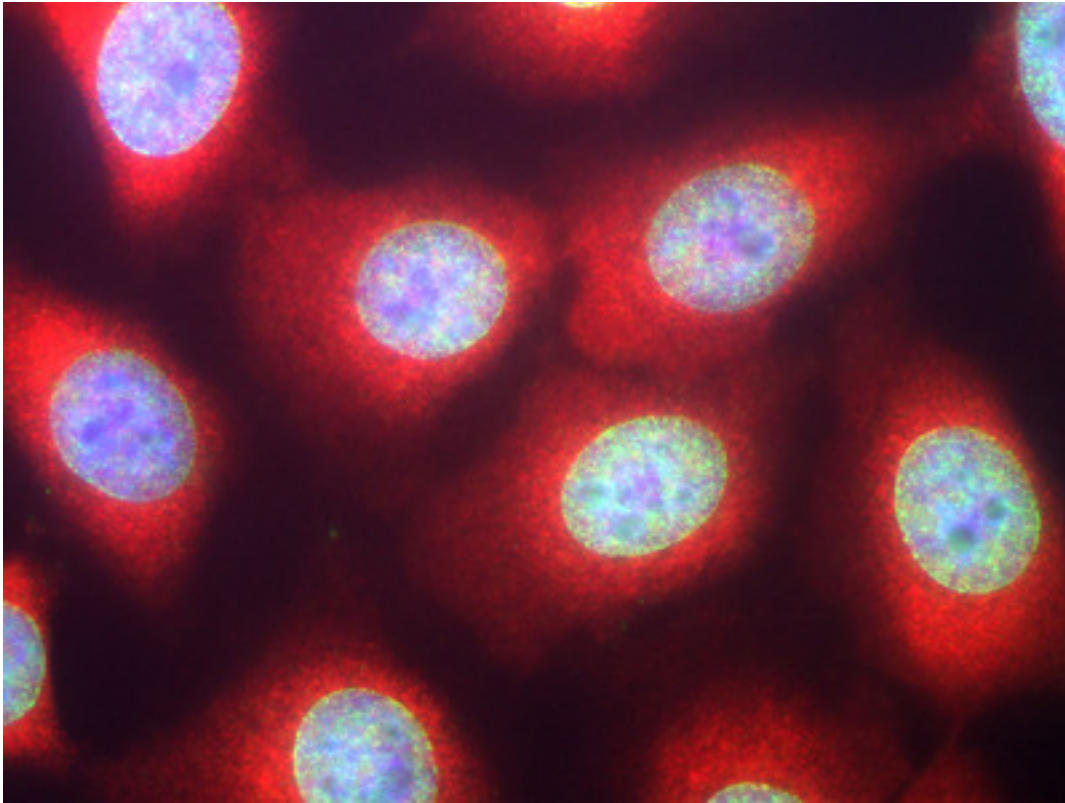
CSNK1A1 / CK1 Alpha Chicken anti-Human Polyclonal Antibody - LS-B10375 - LSBio	
<b>CatalogID:</b>	LS-B10375
<b>Validation:</b>	This antibody replaces catalog number LS-C204507. It has been validated for use in the following assays: IHC-P.
<b>Target:</b>	casein kinase 1, alpha 1 (CSNK1A1)
<b>Synonyms:</b>	CSNK1A1 Antibody, CK1 alpha Antibody, CK1a Antibody, CK1alpha Antibody, Clock regulator kinase Antibody, CK1 Antibody, Casein kinase 1 alpha Antibody, CK1a Antibody, CK1alpha Antibody, Down-regulated in lung cancer Antibody, HLCDGP1 Antibody, PRO2975 Antibody, Casein kinase 1, alpha 1 Antibody, Casein kinase I alpha Antibody, Casein kinase I isoform alpha Antibody, CKI-alpha Antibody
<b>Family / Subfamily:</b>	Protein Kinase / Casein kinase I
<b>Host</b>	CSNK1A1 antibody was produced in Chicken
<b>Clonality:</b>	Polyclonal
<b>Isotype:</b>	IgY
<b>Immunogen Species:</b>	CSNK1A1 / CK1 Alpha antibody was raised against Human
<b>Reactivity:</b>	Human
<b>Purification:</b>	Purified
<b>Presentation:</b>	Liquid
<b>Recommended Storage:</b>	+4°C or -20°C, Avoid repeated freezing and thawing.
<b>Usage Summary:</b>	Try at dilutions of 1:500-1:1000 for immunofluorescence, and 1:5000 for ABC or other enzyme linked immunocytochemical procedures. For western blots try at 1:10000.
<b>Uses:</b>	IHC - Paraffin (1:500), ICC (1:5000), Immunofluorescence (1:500 - 1:1000), Western blot (1:10000) (Optimal dilution to be determined by the researcher)
<b>Size:</b>	50 µl

**Immunohistochemistry Image:**



Human Small Intestine: Formalin-Fixed, Paraffin-Embedded (FFPE)

**Immunocytochemistry Image:**



High power image of HeLa cells stained with chicken casein kinase 1 alpha antibody (red) and our panspecific mouse monoclonal antibody to nuclear pore complexes MCA-39C7 (green). Casein kinase 1 alpha has a particulate distribution both in the nucleus and the cytoplasm. Blue is the Hoeschst DNA stain. High quality immunocytochemical images made using this antibody are shown in reference 4.

**Western Blot Image:**



Western blot of whole rat spinal cord homogenate stained with chicken casein kinase 1 alpha antibody, at dilution of 1:10,000. A prominent band running with an apparent SDS-PAGE molecular weight of ~38kDa and a less prominent band at ~34kDa corresponds to other CK1 alpha isotypes.

**Requested From:**

Japan

Laboratory Reagent For In Vitro Research Use Only

Not for resale without prior written consent from LifeSpan BioSciences, Inc.

Created on 9/23/2014

© 2014 LifeSpan BioSciences