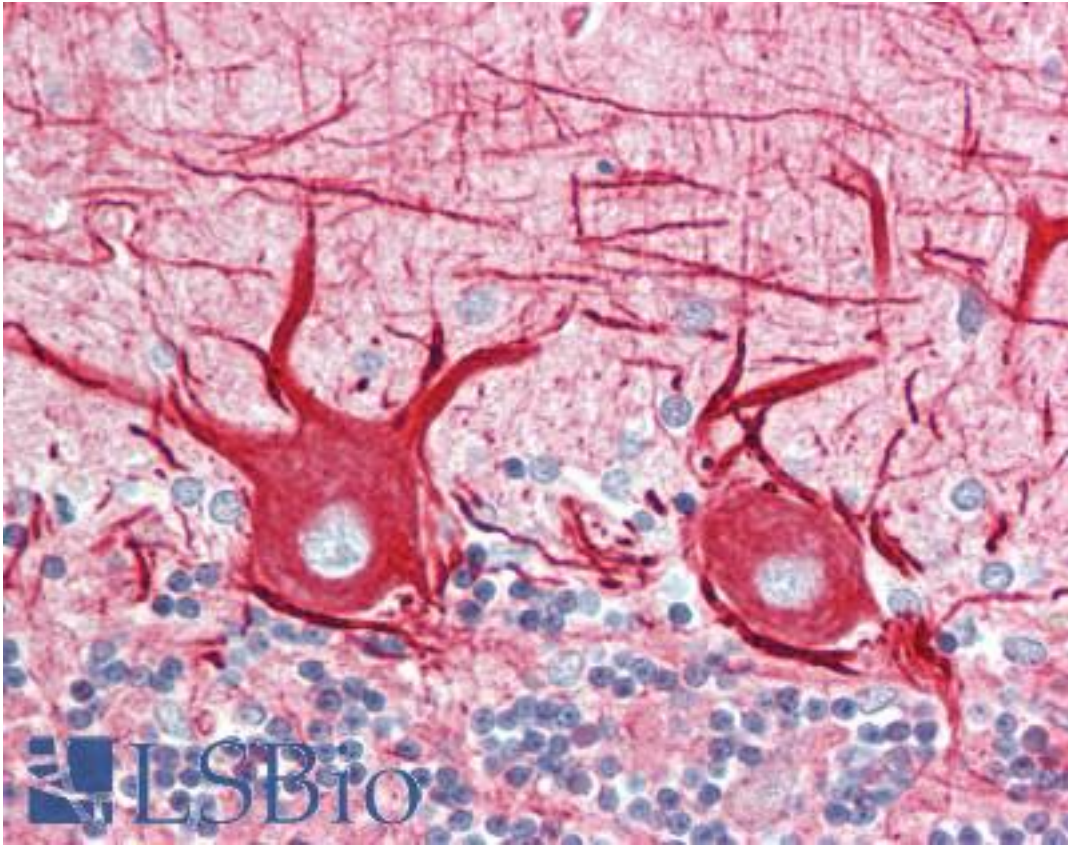


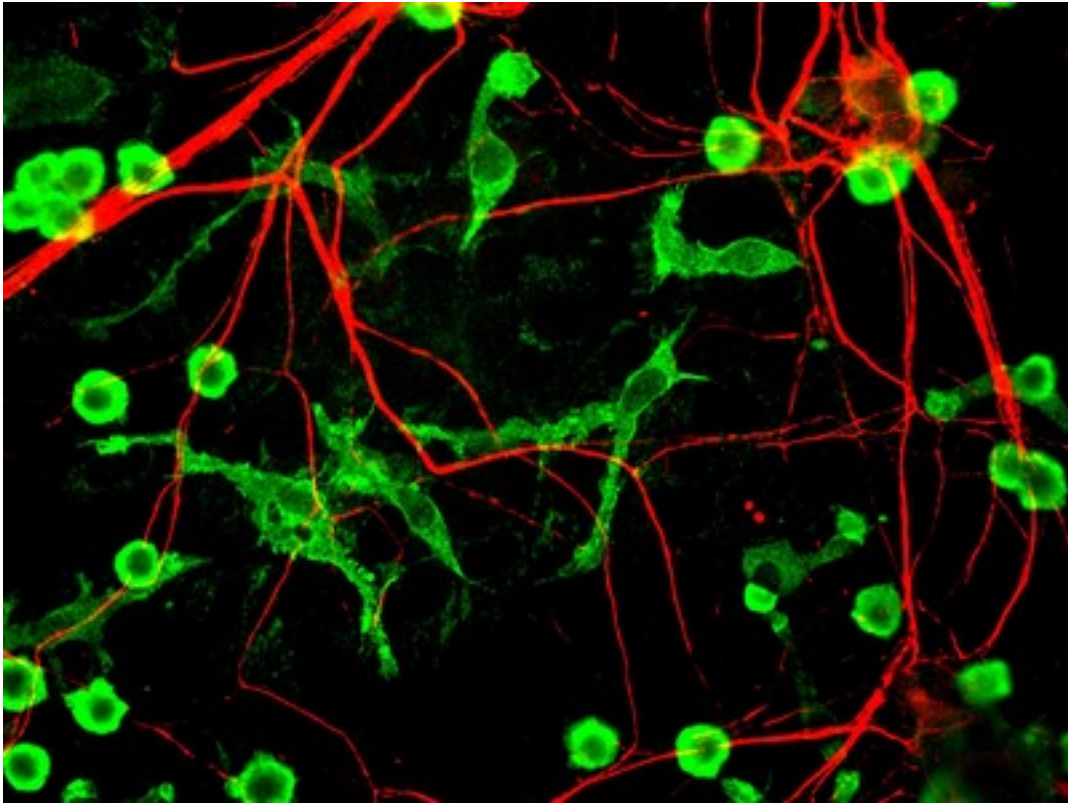
INA / Alpha Internexin Chicken anti-Human Polyclonal Antibody - LS-B10374 - LSBio	
CatalogID:	LS-B10374
Validation:	This antibody replaces catalog number LS-C204547. It has been validated for use in the following assays: IHC-P.
Target:	internexin neuronal intermediate filament protein, alpha (INA)
Synonyms:	INA Antibody, 66 kDa neurofilament protein Antibody, Alpha Internexin Antibody, Alpha-internexin Antibody, Alpha-Inx Antibody, NEF5 Antibody, Neurofilament 5 Antibody, Neurofilament-66 Antibody, NF-66 Antibody, TXBP-1 Antibody, Neurofilament 5 (66kD) Antibody
Host	INA antibody was produced in Chicken
Clonality:	Polyclonal
Isotype:	IgY
Immunogen Species:	INA / Alpha Internexin antibody was raised against Human
Reactivity:	Human
Purification:	Purified
Presentation:	Liquid
Recommended Storage:	+4°C or -20°C, Avoid repeated freezing and thawing.
Usage Summary:	The IgY preparation can be diluted to 1:1000 and higher for immunofluorescence staining and 1:10000 and higher for western blotting. On western blots use a brain or spinal cord homogenate and look for a major band at SDS-PAGE apparent molecular weight of 66 to 68kDa. The human protein runs at ~68kDa, while rat, mouse and other species run at ~66kDa. Minor bands at ~150kDa are probably covalent dimers, and bands at ~50kDa represent alpha-internexin breakdown products.
Uses:	IHC - Paraffin (1:500), ICC (1:1000), Immunofluorescence (1:1000), Western blot (1:10000) (Optimal dilution to be determined by the researcher)
Size:	50 µl

Immunohistochemistry Image:



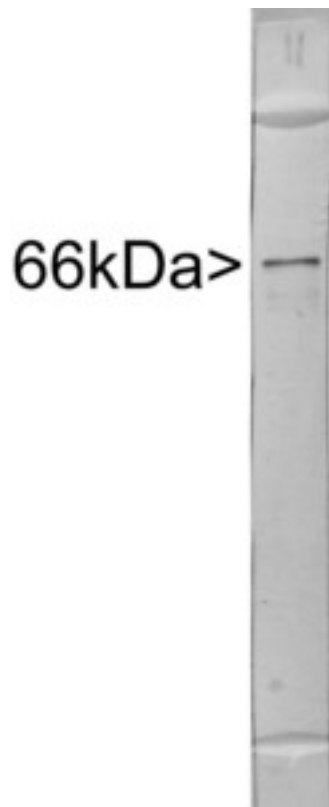
Human Brain, Cerebellum: Formalin-Fixed, Paraffin-Embedded (FFPE)

Immunocytochemistry Image:



Mixed neuron glia cultures stain with INA antibody (red) and counterstained with rabbit polyclonal antibody to Coronin 1a, (green) which is an excellent marker of microglia and lymphocytes. The chicken internexin antibody is an excellent marker of neuronal processes in these cultures.

Western Blot Image:



Western blot of extract of rat brain stem crude extract stained with INA antibody, showing a single strong clean band at ~66kDa.

Requested From:

Japan

Laboratory Reagent For In Vitro Research Use Only

Not for resale without prior written consent from LifeSpan BioSciences, Inc.

Created on 9/23/2014

© 2014 LifeSpan BioSciences