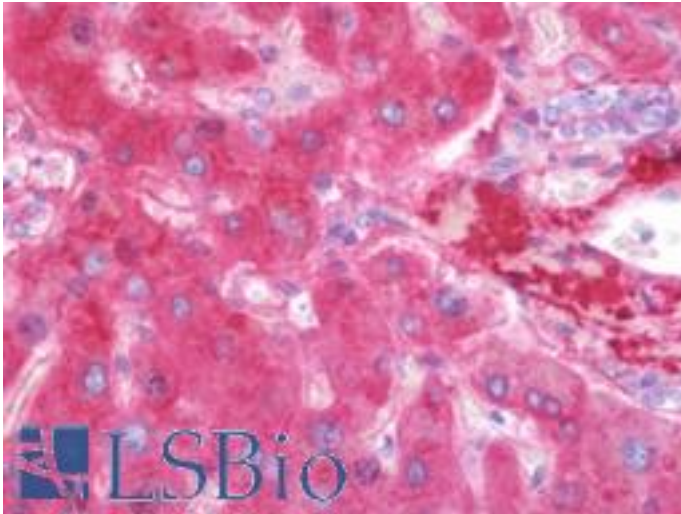


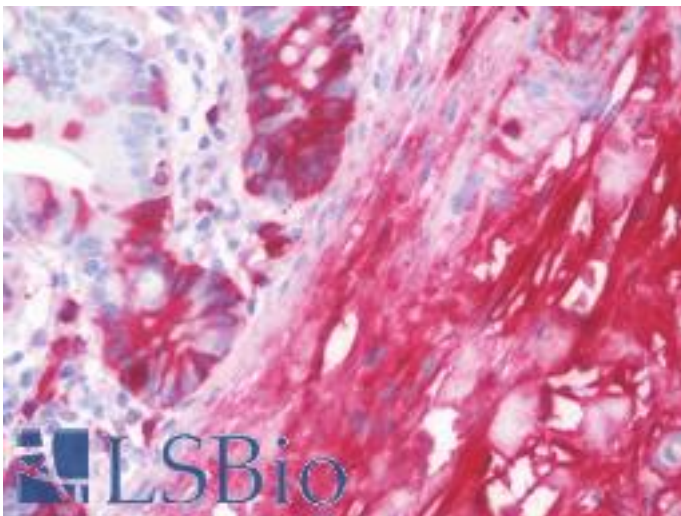
VTN / Vitronectin Mouse anti-Human Monoclonal (aa1-310) (6F212) Antibody - LS-B10373 - LSBio	
<b>CatalogID:</b>	LS-B10373
<b>Validation:</b>	This antibody replaces catalog number LS-C40238. It has been validated for use in the following assays: IHC-P.
<b>Target:</b>	vitronectin (VTN)
<b>Synonyms:</b>	VTN Antibody, Epibolin Antibody, Serum-spreading factor Antibody, VNT Antibody, S-protein Antibody, Somatomedin B Antibody, V75 Antibody, VN Antibody, Complement S-protein Antibody, Serum spreading factor Antibody, Vitronectin Antibody
<b>Family / Subfamily:</b>	Matrix Protein / not assigned-Other
<b>Host</b>	VTN antibody was produced in Mouse
<b>Clonality:</b>	Monoclonal
<b>Isotype:</b>	IgG1,k
<b>Clone Name:</b>	6F212
<b>Immunogen Species:</b>	VTN / Vitronectin antibody was raised against Human
<b>Antigen Type:</b>	Purified protein
<b>Immunogen:</b>	VTN / Vitronectin antibody was raised against human vitronectin purified from plasma by heparin-affinity chromatography.
<b>Specificity:</b>	Highly specific for vitronectin. There is no evidence for cross-reactivity with other connective tissue proteins (fibronectin, elastin, collagen, laminin). Cross-reacts with vitronectin from cat, dog, rabbit and to a lesser extent with cow. Epitope is located within a cyanogen bromide cleavage fragment comprising aa 1-310. Binds nearly as well to native vitronectin as to denatured. It interferes with vitronectin-inhibition of the lysis of terminal complement complexes (TCC) and it inhibits vitronectin binding of PAI-1.
<b>Epitope:</b>	aa1-310
<b>Reactivity:</b>	Human, Bovine, Cat, Dog, Rabbit
<b>Purification:</b>	Protein A/G purified
<b>Presentation:</b>	PBS, pH 7.4, 15 mM sodium azide
<b>Recommended Storage:</b>	Long term: -20°C; Short term: +4°C. Avoid repeat freeze-thaw cycles.
<b>Usage Summary:</b>	Suitable for use in ELISA, Western Blot. ELISA: 1:40,000. Western Blot: 1:50.
<b>Uses:</b>	IHC - Paraffin (10 µg/ml), Western blot (1:50), ELISA (1:40000) (Optimal dilution to be determined by the researcher)
<b>Size:</b>	50 µl
<b>Concentration:</b>	1 mg/ml

**Immunohistochemistry Image:**



Human Liver: Formalin-Fixed, Paraffin-Embedded (FFPE)

**Immunohistochemistry Image:**



Human Small Intestine: Formalin-Fixed, Paraffin-Embedded (FFPE)

**Requested From:**

Japan

Laboratory Reagent For In Vitro Research Use Only

Not for resale without prior written consent from LifeSpan BioSciences, Inc.

Created on 9/23/2014

© 2014 LifeSpan BioSciences