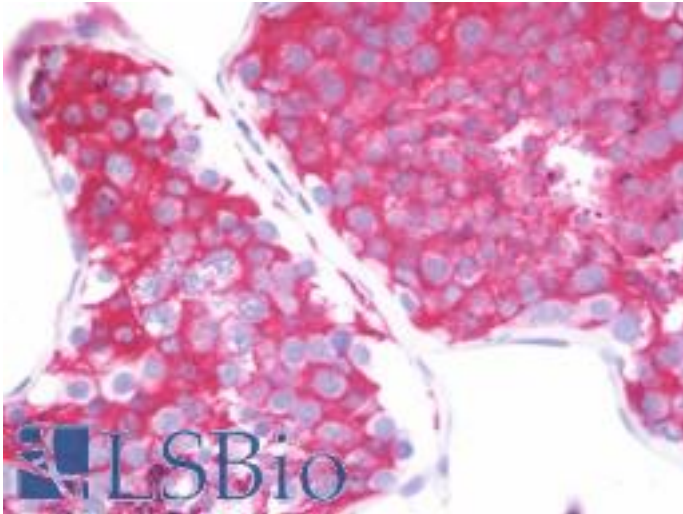


CLDN16 / Claudin 16 Rabbit anti-Human Polyclonal (aa6-33) Antibody - LS-B10372 - LSBio

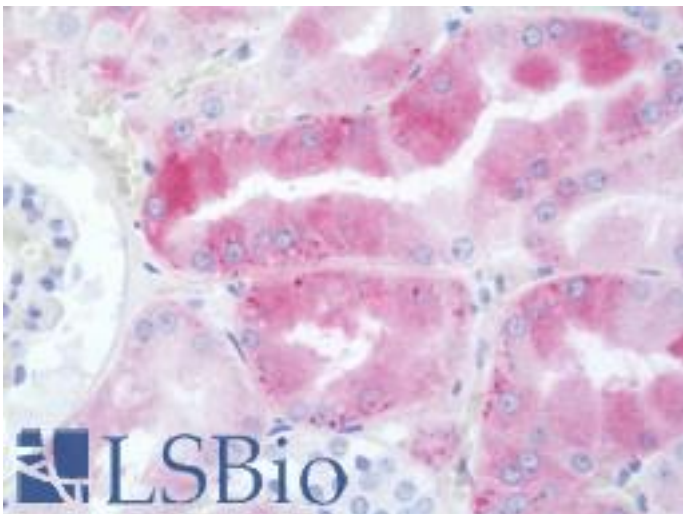
CatalogID:	LS-B10372
Validation:	This antibody replaces catalog number LS-C168810. It has been validated for use in the following assays: IHC-P.
Target:	claudin 16 (CLDN16)
Synonyms:	CLDN16 Antibody, Claudin 16 Antibody, Claudin-16 Antibody, Paracellin-1 Antibody, PCLN1 Antibody, PCLN-1 Antibody, HOMG3 Antibody
Family / Subfamily:	Claudin / not assigned-Claudin
Host	CLDN16 antibody was produced in Rabbit
Clonality:	Polyclonal
Immunogen Species:	CLDN16 / Claudin 16 antibody was raised against Human
Antigen Type:	Synthetic peptide
Immunogen:	CLDN16 / Claudin 16 antibody was raised against kLH-conjugated synthetic peptide from N-terminal region of human CLDN16.
Specificity:	Human Claudin 16 / Paracellin-1
Epitope:	aa6-33
Reactivity:	Human
Purification:	Immunoaffinity purified
Presentation:	PBS, 0.09% sodium azide
Recommended Storage:	Maintain refrigerated at 2-8°C for up to 6 months. For long term storage store at -20°C.
Uses:	IHC - Paraffin (1:100), Western blot (1:1000), Flow Cytometry (1:10 - 1:50) (Optimal dilution to be determined by the researcher)
Size:	200 µl

Immunohistochemistry Image:



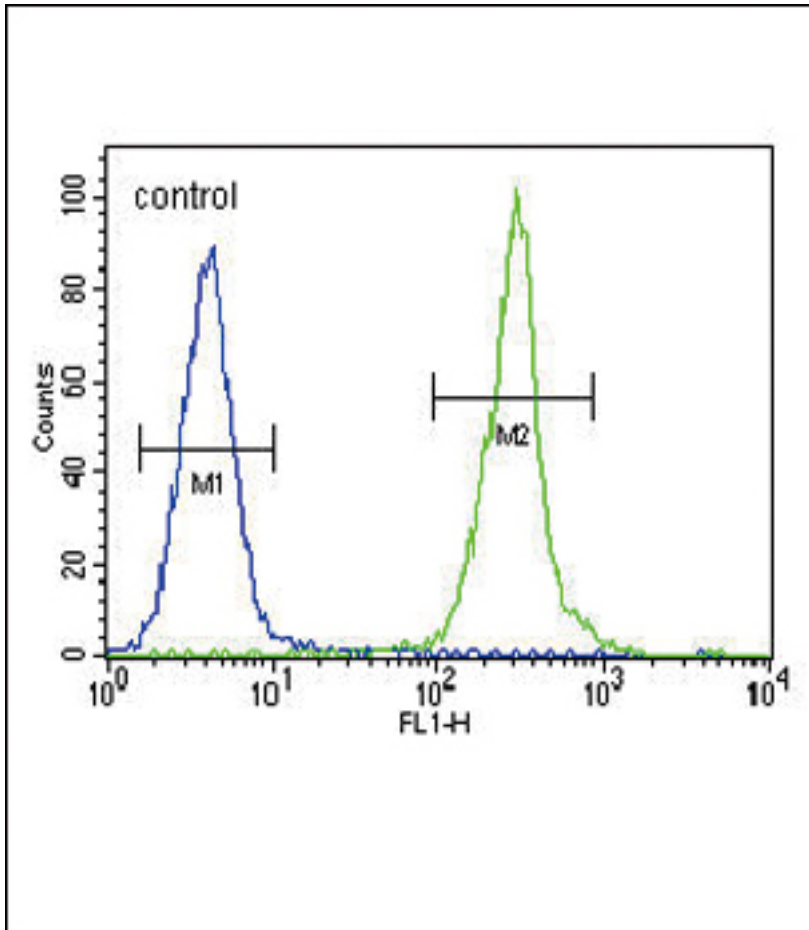
Human Testis: Formalin-Fixed, Paraffin-Embedded (FFPE)

Immunohistochemistry Image:



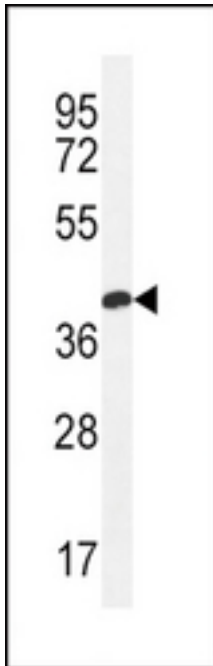
Human Kidney: Formalin-Fixed, Paraffin-Embedded (FFPE)

Flow Cytometry Image:



CLDN16 Antibody (N-term) flow cytometry of MDA-MB435 cells (right histogram) compared to a negative control cell (left histogram). FITC-conjugated goat-anti-rabbit secondary antibodies were used for the analysis.

Western Blot Image:



CLDN16 Antibody (N-term) Western blot of MDA-MB435 cell line lysates (35 ug/lane). This demonstrates the CLDN16 antibody detected the CLDN16 protein (arrow).

Requested From:

Japan

Laboratory Reagent For In Vitro Research Use Only

Not for resale without prior written consent from LifeSpan BioSciences, Inc.

Created on 9/23/2014

© 2014 LifeSpan BioSciences