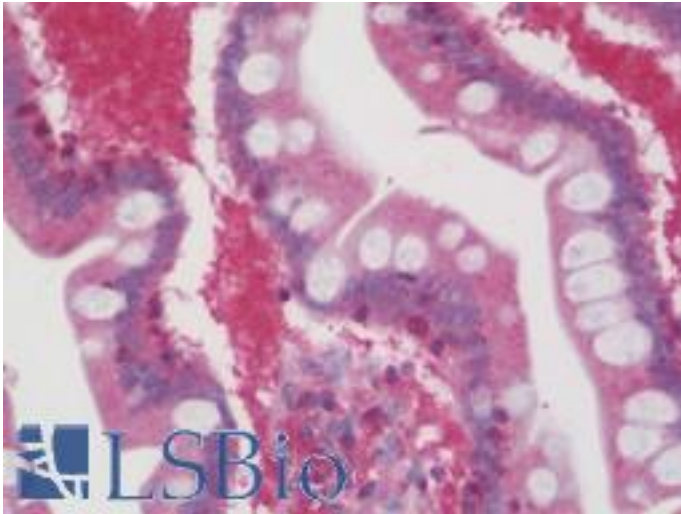


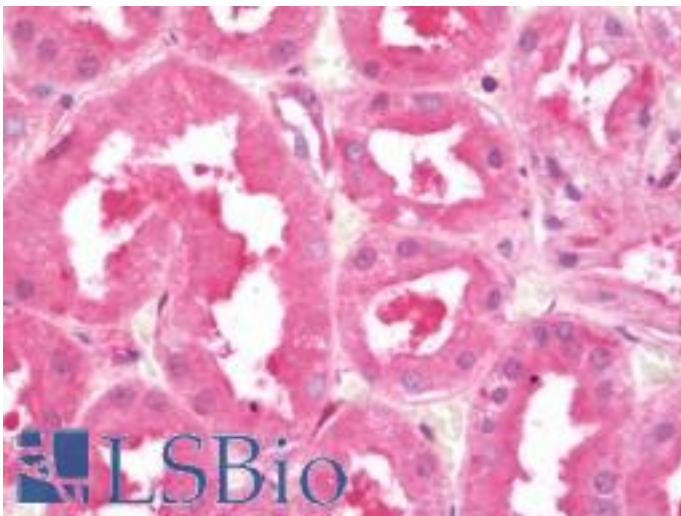
4E-BP2 / EIF4EBP2 Rabbit anti-Human Polyclonal (aa87-115) Antibody - LS-B10370 - LSBio	
CatalogID:	LS-B10370
Validation:	This antibody replaces catalog number LS-C157710. It has been validated for use in the following assays: IHC-P.
Target:	eukaryotic translation initiation factor 4E binding protein 2 (EIF4EBP2)
Synonyms:	EIF4EBP2 Antibody, 4E-BP2 Antibody, 4EBP2 Antibody, EIF4E-binding protein 2 Antibody, PHASII Antibody
Host	EIF4EBP2 antibody was produced in Rabbit
Clonality:	Polyclonal
Immunogen Species:	4E-BP2 / EIF4EBP2 antibody was raised against Human
Antigen Type:	Synthetic peptide
Immunogen:	4E-BP2 / EIF4EBP2 antibody was raised against kLH-conjugated synthetic peptide from C-terminal region of human EIF4EBP2.
Specificity:	Human 4E-BP2 / EIF4EBP2
Epitope:	aa87-115
Reactivity:	Human
Purification:	Immunoaffinity purified
Presentation:	PBS, 0.09% sodium azide
Recommended Storage:	Maintain refrigerated at 2-8°C for up to 6 months. For long term storage store at -20°C.
Uses:	IHC - Paraffin (1:100), Western blot (1:1000) (Optimal dilution to be determined by the researcher)
Size:	200 µl

Immunohistochemistry Image:



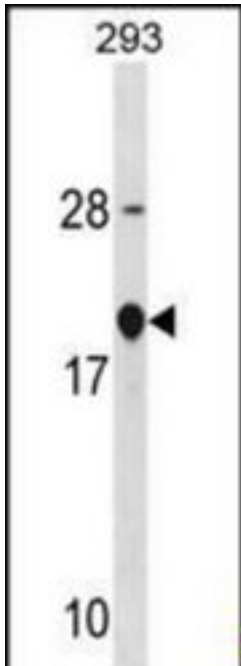
Human Small Intestine: Formalin-Fixed, Paraffin-Embedded (FFPE)

Immunohistochemistry Image:



Human Kidney: Formalin-Fixed, Paraffin-Embedded (FFPE)

Western Blot Image:



EIF4EBP2 Antibody (C-term) Western blot of 293 cell line lysates (35 ug/lane). This demonstrates the EIF4EBP2 antibody detected the EIF4EBP2 protein (arrow).

Requested From:

Japan

Laboratory Reagent For In Vitro Research Use Only

Not for resale without prior written consent from LifeSpan BioSciences, Inc.

Created on 9/23/2014

© 2014 LifeSpan BioSciences