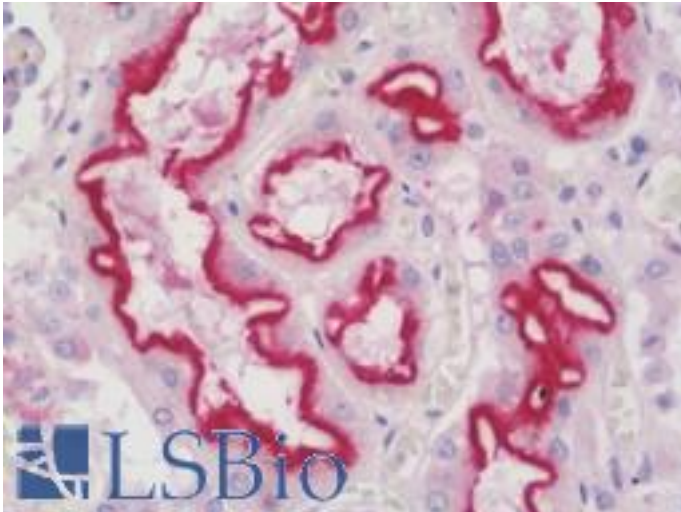


ARL10 Rabbit anti-Human Polyclonal (aa150-176) Antibody - LS-B10369 - LSBio

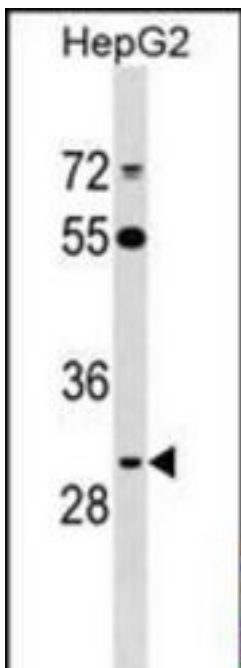
CatalogID:	LS-B10369
Validation:	This antibody replaces catalog number LS-C159116. It has been validated for use in the following assays: IHC-P.
Target:	ADP-ribosylation factor-like 10 (ARL10)
Synonyms:	ARL10 Antibody, ARL10A Antibody
Host	ARL10 antibody was produced in Rabbit
Clonality:	Polyclonal
Immunogen Species:	ARL10 antibody was raised against Human
Antigen Type:	Synthetic peptide
Immunogen:	ARL10 antibody was raised against kLH-conjugated synthetic peptide from internal region of human ARL10.
Specificity:	Human ARL10
Epitope:	aa150-176
Reactivity:	Human
Purification:	Immunoaffinity purified
Presentation:	PBS, 0.09% sodium azide
Recommended Storage:	Maintain refrigerated at 2-8°C for up to 6 months. For long term storage store at -20°C.
Uses:	IHC - Paraffin (1:100), Western blot (1:1000) (Optimal dilution to be determined by the researcher)
Size:	200 µl

Immunohistochemistry Image:



Human Kidney: Formalin-Fixed, Paraffin-Embedded (FFPE)

Western Blot Image:



ARL10 Antibody (Center) Western blot of HepG2 cell line lysates (35 ug/lane). This demonstrates the ARL10 antibody detected the ARL10 protein (arrow).

Requested From:

Japan

Laboratory Reagent For In Vitro Research Use Only

Not for resale without prior written consent from LifeSpan BioSciences, Inc.

Created on 9/23/2014

© 2014 LifeSpan BioSciences