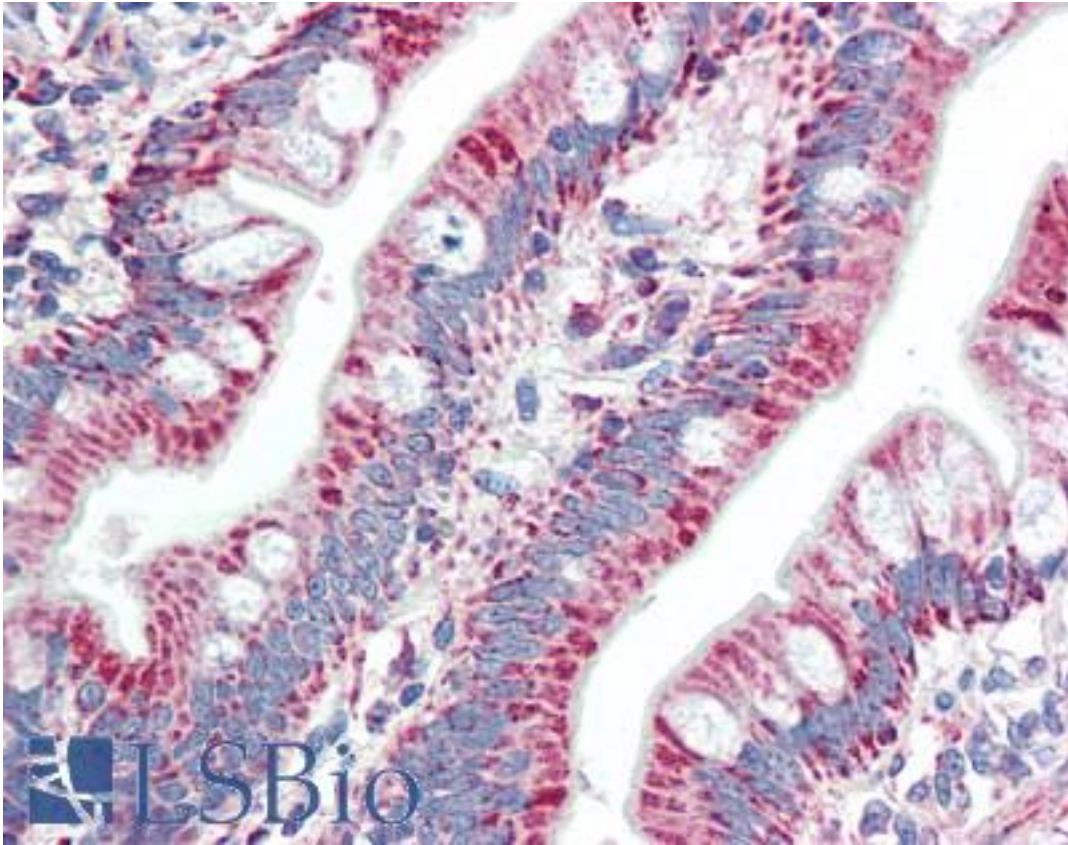


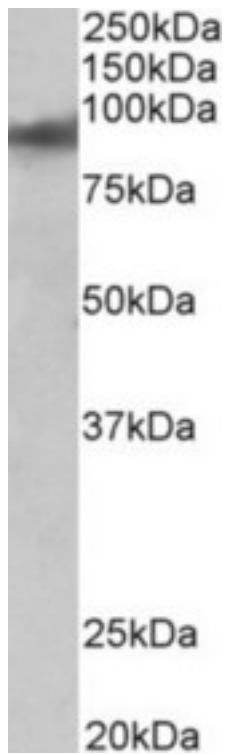
ZNF652 Goat anti-Human Polyclonal (aa594-606) Antibody - LS-B10351 - LSBio	
CatalogID:	LS-B10351
Validation:	This antibody replaces catalog number LS-C154922. It has been validated for use in the following assays: IHC-P.
Target:	zinc finger protein 652 (ZNF652)
Synonyms:	ZNF652 Antibody, KIAA0924 Antibody, Zinc finger protein 652 Antibody
Family / Subfamily:	Zinc Finger
Host	ZNF652 antibody was produced in Goat
Clonality:	Polyclonal
Immunogen Species:	ZNF652 antibody was raised against Human
Antigen Type:	Synthetic peptide
Immunogen:	ZNF652 antibody was raised against synthetic peptide C-RHLAEKNSSAQHH from the C-terminus of human ZNF652 (NP_055712.1). Percent identity by BLAST analysis: Human, Chimpanzee, Gorilla, Orangutan, Monkey, Marmoset, Elephant, Panda, Horse, Opossum, Turkey, Chicken (100%); Galago, Bovine, Bat, Porcine, Lizard (92%); Dog, Rabbit (85%).
Specificity:	Human ZNF652. Reported variants represent identical protein: NP_055712.1, NP_001138837.1
Epitope:	aa594-606
Reactivity:	Human, Chimpanzee, Gorilla, Orangutan, Monkey, Horse, Chicken
Purification:	Immunoaffinity purified
Presentation:	Tris-buffered saline, pH 7.3, 0.5% BSA, 0.02% sodium azide
Recommended Storage:	Store at -20°C. Minimize freezing and thawing.
Usage Summary:	Peptide ELISA: antibody detection limit dilution 1:64000. Western blot: Approx 90kD band observed in Human Heart, Kidney and Liver lysates (calculated MW of 69.7kD according to NP_055712.1). The observed molecular weight corresponds to earlier findings in literature with different antibodies (Kumar et al, Mol Cancer Res. 2006 Sep;4(9):655-65. PMID: 1696643). Recommended concentration: 0.01-0.03 ug/ml.
Uses:	IHC - Paraffin (5 µg/ml), Western blot (0.01 - 0.03 µg/ml), ELISA (1:64000) (Optimal dilution to be determined by the researcher)
Size:	50 µg
Concentration:	0.5 mg/ml

Immunohistochemistry Image:



Human Small Intestine: Formalin-Fixed, Paraffin-Embedded (FFPE)

Western Blot Image:



ZNF652 antibody (0.01 ug/ml) staining of Human Heart lysate (35 ug protein in RIPA buffer). Primary incubation was 1 hour. Detected by chemiluminescence.

Requested From:

Japan

Laboratory Reagent For In Vitro Research Use Only

Not for resale without prior written consent from LifeSpan BioSciences, Inc.

Created on 9/23/2014

© 2014 LifeSpan BioSciences