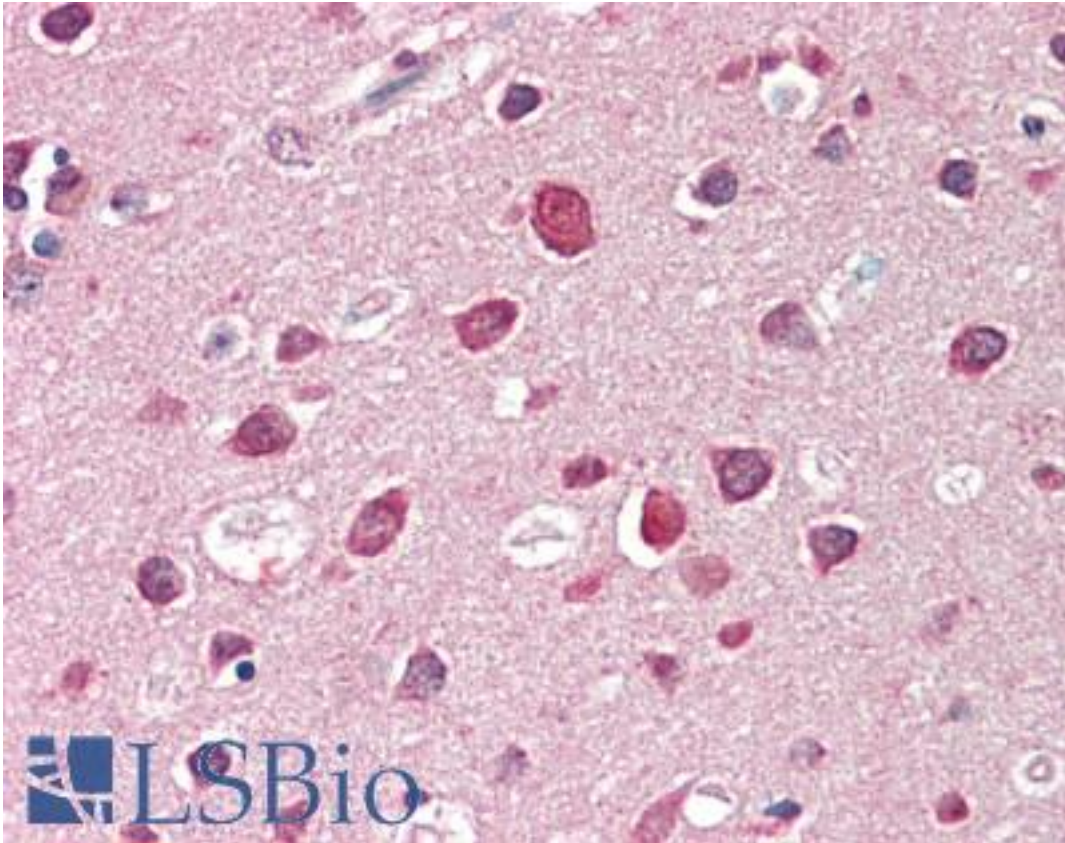


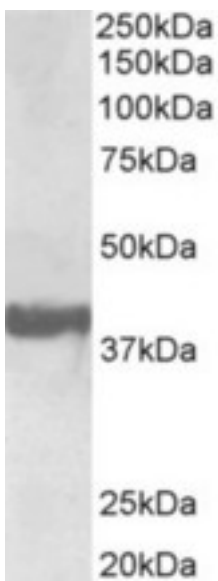
SH3GL2 Goat anti-Human Polyclonal (Internal) Antibody - LS-B10349 - LSBio	
CatalogID:	LS-B10349
Validation:	This antibody replaces catalog number LS-C155061. It has been validated for use in the following assays: IHC-P.
Target:	SH3-domain GRB2-Like 2 (SH3GL2)
Synonyms:	SH3GL2 Antibody, CNSA2 Antibody, EEN-B1 Antibody, Endophilin-A1 Antibody, SH3D2A Antibody, SH3 domain protein 2A Antibody, SH3-domain GRB2-like 2 Antibody, SH3P4 Antibody, Endophilin A1 BAR domain Antibody, Endophilin-1 Antibody
Host	SH3GL2 antibody was produced in Goat
Clonality:	Polyclonal
Immunogen Species:	SH3GL2 antibody was raised against Human
Antigen Type:	Synthetic peptide
Immunogen:	SH3GL2 antibody was raised against synthetic peptide C-SLEFPTGDSTQPN from an internal region of human SH3GL2 (NP_003017.1). Percent identity by BLAST analysis: Human, Chimpanzee, Gorilla, Gibbon, Monkey, Marmoset, Horse, Rabbit, Porcine, Guinea pig (100%); Mouse, Hamster, Panda, Dog, Bovine (92%); Galago, Rat, Elephant, Bat (85%).
Specificity:	Human SH3GL2.
Epitope:	Internal
Reactivity:	Human, Chimpanzee, Gorilla, Gibbon, Monkey, Guinea pig, Horse, Rabbit
Purification:	Immunoaffinity purified
Presentation:	Tris-buffered saline, pH 7.3, 0.5% BSA, 0.02% sodium azide
Recommended Storage:	Store at -20°C. Minimize freezing and thawing.
Usage Summary:	Peptide ELISA: antibody detection limit dilution 1:64000. Western blot: Approx 38kD band observed in Human Brain (Frontal Cortex) lysates (calculated MW of 40.0kD according to NP_003017.1). Recommended concentration: 0.3-1 ug/ml.
Uses:	IHC - Paraffin (5 µg/ml), Western blot (0.3 - 1 µg/ml), ELISA (1:64000) (Optimal dilution to be determined by the researcher)
Size:	50 µg
Concentration:	0.5 mg/ml

Immunohistochemistry Image:



Human Brain, Cortex: Formalin-Fixed, Paraffin-Embedded (FFPE)

Western Blot Image:



SH3 ugL2 antibody (0.3 ug/ml) staining of Human Frontal Cortex lysate (35 ug protein in RIPA buffer). Primary incubation was 1 hour. Detected by chemiluminescence.

Requested From:

Japan

Laboratory Reagent For In Vitro Research Use Only

Not for resale without prior written consent from LifeSpan BioSciences, Inc.

Created on 9/23/2014

© 2014 LifeSpan BioSciences