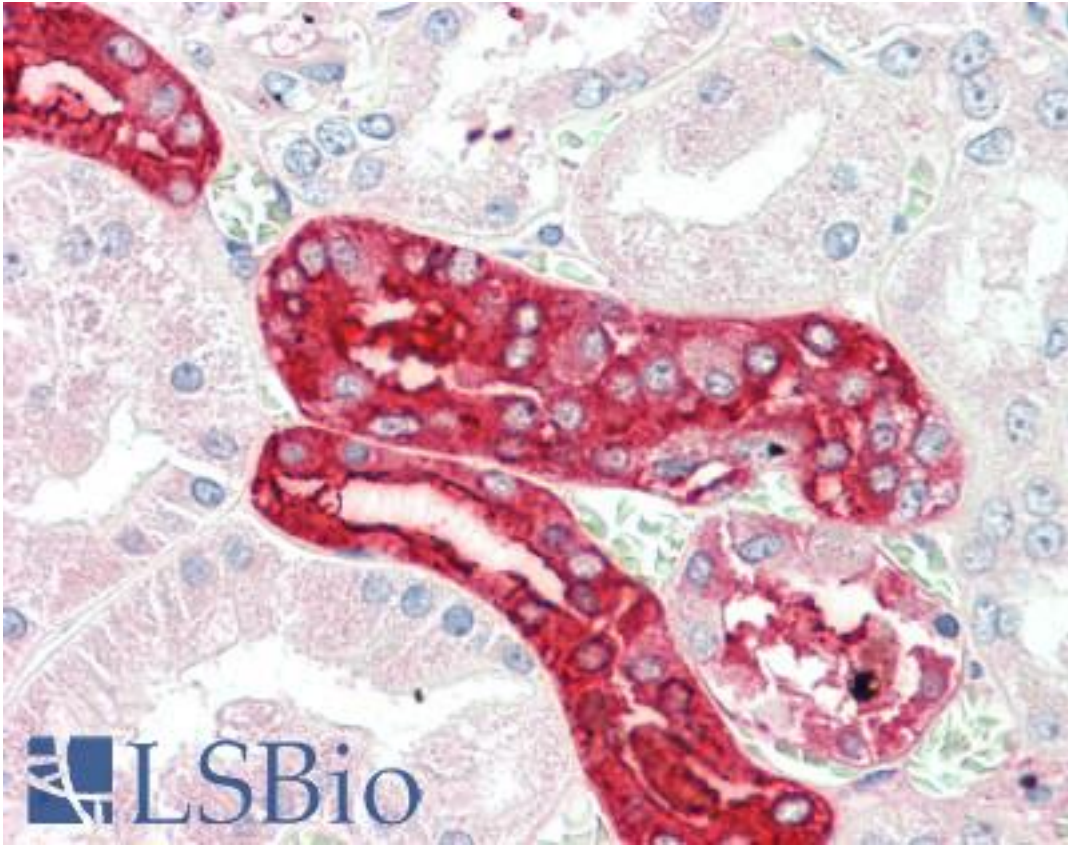


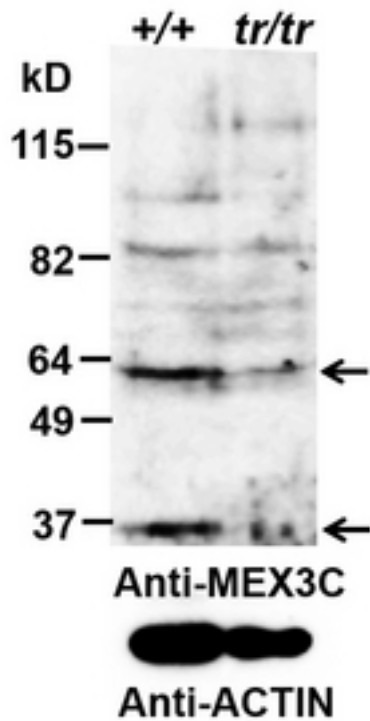
MEX3C Goat anti-Human Polyclonal (aa541-554) Antibody - LS-B10347 - LSBio	
CatalogID:	LS-B10347
Validation:	This antibody replaces catalog number LS-C186547. It has been validated for use in the following assays: IHC-P.
Target:	mex-3 RNA binding family member C (MEX3C)
Synonyms:	MEX3C Antibody, RNF194 Antibody, RING finger protein 194 Antibody, RNA-binding protein MEX3C Antibody, BM-013 Antibody, Mex-3 homolog C (C. elegans) Antibody, MEX-3C Antibody, RKHD2 Antibody
Host	MEX3C antibody was produced in Goat
Clonality:	Polyclonal
Immunogen Species:	MEX3C antibody was raised against Human
Antigen Type:	Synthetic peptide
Immunogen:	MEX3C antibody was raised against synthetic peptide C-TPRLSPTFPESIEH from an internal region of human MEX3C (NP_057710.3). Percent identity by BLAST analysis: Hamster, Panda, Dog, Cat, Bovine, Horse, Rabbit, Pig, Guinea pig (100%); Opossum, Platypus (93%); Lizard (86%).
Specificity:	Human MEX3C
Epitope:	aa541-554
Reactivity:	Human, Mouse, Bovine, Dog, Guinea pig, Hamster, Horse, Pig, Rabbit
Purification:	Immunoaffinity purified
Presentation:	Tris-buffered saline, pH 7.3, 0.5% BSA, 0.02% sodium azide
Recommended Storage:	Store at -20°C. Minimize freezing and thawing.
Usage Summary:	Peptide ELISA: antibody detection limit dilution 1:32000. Western blot: Approx 60+36kD bands observed in Mouse Testis lysates, and these bands reduced after knock-down by gene trap (calculated MW of 69.4kD according to NP_057710.3). Recommended concentration: 0.2-0.5 ug/ml.
Uses:	IHC - Paraffin (5 µg/ml), Western blot (0.2 - 0.5 µg/ml), ELISA (1:32000) (Optimal dilution to be determined by the researcher)
Size:	50 µg
Concentration:	0.5 mg/ml

Immunohistochemistry Image:



Human Kidney: Formalin-Fixed, Paraffin-Embedded (FFPE)

Western Blot Image:



MEX3C antibody (0.2 ug/ml) staining of Mouse Testis (+/+ is wt, trp/trp is knock-down) lysate (35 ug protein in RIPA buffer). Data obtained by Dr. B. Lu, Wake Forest Baptist Medical Center, Winston-Salem, NC, USA. Primary incubation was 1 hour. Detected by chemiluminescence.

Requested From:

Japan

Laboratory Reagent For In Vitro Research Use Only

Not for resale without prior written consent from LifeSpan BioSciences, Inc.

Created on 9/23/2014

© 2014 LifeSpan BioSciences