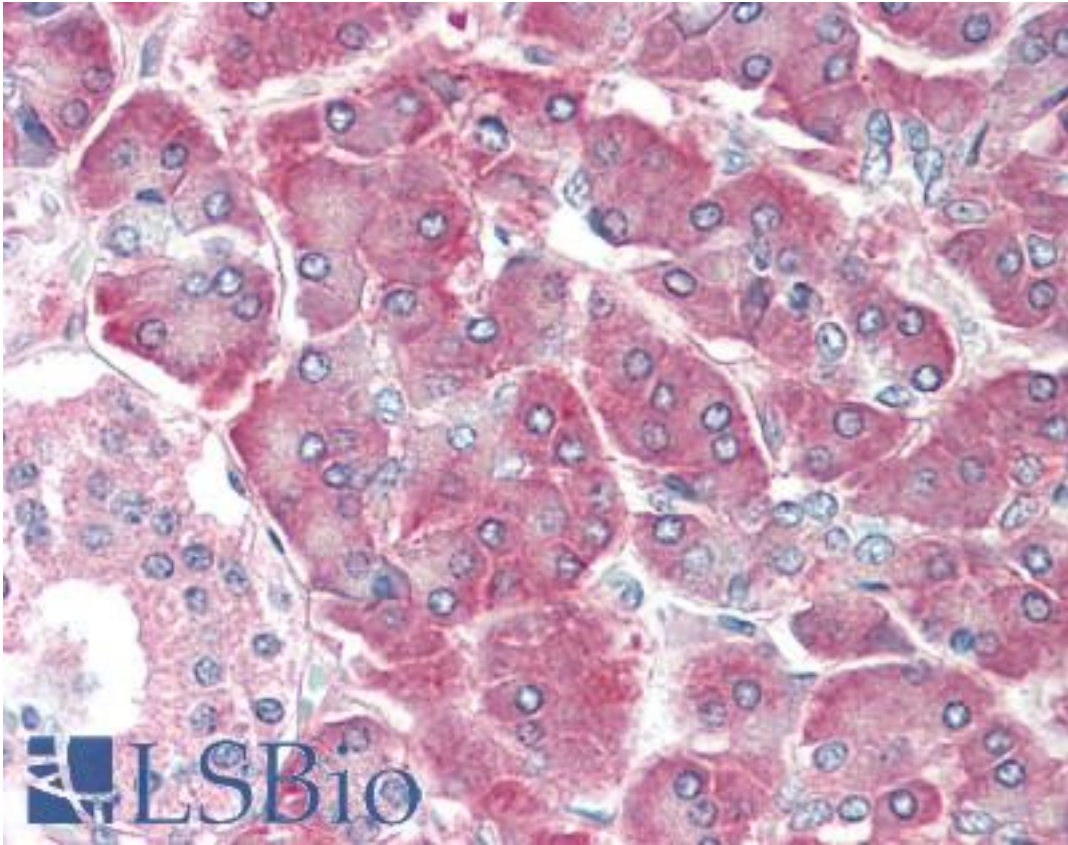


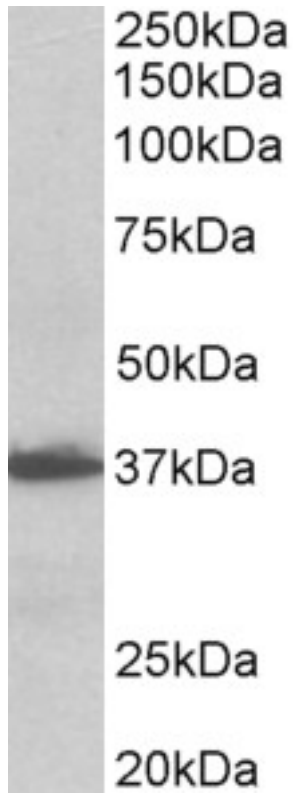
AIMP1 / EMAP II / p43 Goat anti-Human Polyclonal (aa137-149) Antibody - LS-B10346 - LSBio	
CatalogID:	LS-B10346
Validation:	This antibody replaces catalog number LS-C155009. It has been validated for use in the following assays: IHC-P.
Target:	aminoacyl tRNA synthetase complex-interacting multifunctional protein 1 (AIMP1)
Synonyms:	AIMP1 Antibody, EMAP II Antibody, EMAPII Antibody, EMAP-2 Antibody, HLD3 Antibody, p43 Antibody, EMAP2 Antibody, SCYE1 Antibody
Host	AIMP1 antibody was produced in Goat
Clonality:	Polyclonal
Immunogen Species:	AIMP1 / EMAP II / p43 antibody was raised against Human
Antigen Type:	Synthetic peptide
Immunogen:	AIMP1 / EMAP II / p43 antibody was raised against synthetic peptide C-KQQSIAGSADSKP from an internal region of human AIMP1 / SCYE1 (NP_004748.2; NP_001135888.1). Percent identity by BLAST analysis: Human, Chimpanzee, Gorilla, Orangutan, Gibbon (100%); Monkey, Panda, Dog, Bat, Porcine (92%); Galago, Rat, Elephant, Bovine, Horse (85%).
Specificity:	Human AIMP1 / SCYE1. This antibody is expected to recognize. Reported variants represent identical protein: NP_004748.2, NP_001135887.1
Epitope:	aa137-149
Reactivity:	Human, Chimpanzee, Gorilla, Orangutan, Gibbon
Purification:	Immunoaffinity purified
Presentation:	Tris-buffered saline, pH 7.3, 0.5% BSA, 0.02% sodium azide
Recommended Storage:	Store at -20°C. Minimize freezing and thawing.
Usage Summary:	Peptide ELISA: antibody detection limit dilution 1:32000. Western blot: Approx 37kD band observed in Human Lymph Node and Uterus lysates (calculated MW of 37.0kD according to NP_001135887.1). Recommended concentration: 0.1-0.3 ug/ml.
Uses:	IHC - Paraffin (5 µg/ml), Western blot (0.1 - 0.3 µg/ml), ELISA (1:32000) (Optimal dilution to be determined by the researcher)
Size:	50 µg
Concentration:	0.5 mg/ml

Immunohistochemistry Image:



Human Pancreas: Formalin-Fixed, Paraffin-Embedded (FFPE)

Western Blot Image:



AIMP1 antibody (0.1 ug/ml) staining of Human Lymph Node lysate (35 ug protein in RIPA buffer). Primary incubation was 1 hour. Detected by chemiluminescence.

Requested From:

Japan

Laboratory Reagent For In Vitro Research Use Only

Not for resale without prior written consent from LifeSpan BioSciences, Inc.

Created on 9/23/2014

© 2014 LifeSpan BioSciences