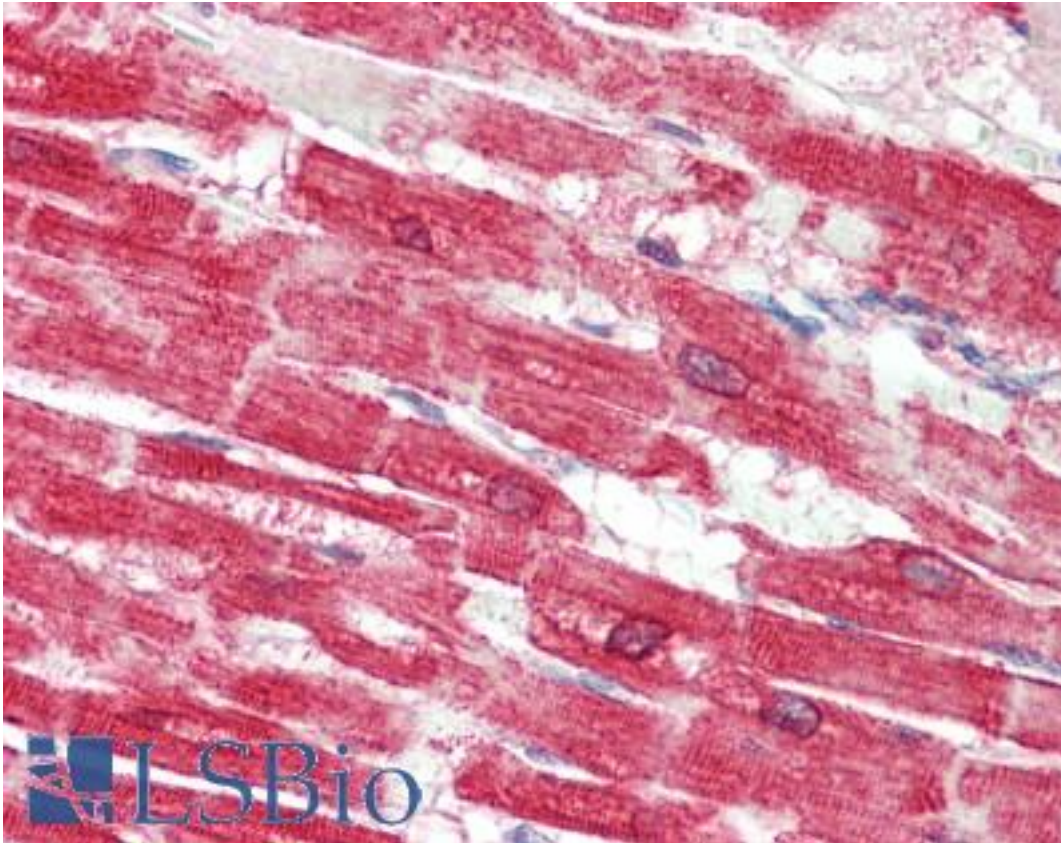


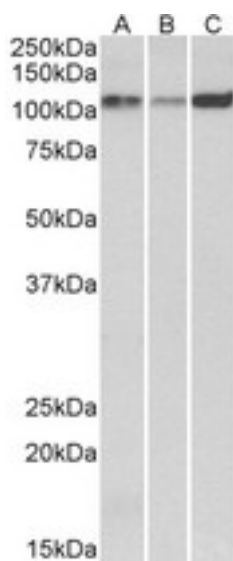
ATP2A2 / SERCA2 Goat anti-Human Polyclonal (aa658-671) Antibody - LS-B10343 - LSBio	
CatalogID:	LS-B10343
Validation:	This antibody replaces catalog number LS-C205061. It has been validated for use in the following assays: IHC-P.
Target:	ATPase, Ca ⁺⁺ transporting, cardiac muscle, slow twitch 2 (ATP2A2)
Synonyms:	ATP2A2 Antibody, ATP2B Antibody, Calcium pump 2 Antibody, DAR Antibody, SR Ca(2+)-ATPase 2 Antibody, Cardiac Ca ²⁺ ATPase Antibody, DD Antibody, SERCA2 Antibody
Family / Subfamily:	Transporter / ATPase - P type, type IIA
Host	ATP2A2 antibody was produced in Goat
Clonality:	Polyclonal
Immunogen Species:	ATP2A2 / SERCA2 antibody was raised against Human
Antigen Type:	Synthetic peptide
Immunogen:	ATP2A2 / SERCA2 antibody was raised against synthetic peptide DELNPSAQRDAQLN from an internal region of human ATP2A2 / SERCA2 (NP_001672.1; NP_733765.1). Percent identity by BLAST analysis: Human, Chimpanzee, Gorilla, Gibbon, Monkey, Ferret, Panda, Rabbit (100%); Mouse, Rat, Horse, Pig, Guinea pig (93%); Bovine, Elephant, Platypus, Lizard, Xenopus (86%).
Specificity:	Human ATP2A2 / SERCA2. This antibody is expected to recognize both reported isoforms (NP_001672.1; NP_733765.1).
Epitope:	aa658-671
Reactivity:	Human, Chimpanzee, Gibbon, Monkey, Mouse, Rat, Rabbit
Purification:	Immunoaffinity purified
Presentation:	Tris saline, pH 7.3, 0.5% BSA, 0.02% sodium azide
Recommended Storage:	Store at -20°C. Minimize freezing and thawing.
Usage Summary:	Peptide ELISA: antibody detection limit dilution 1:128000. Western blot: Approx 110kD band observed in Human, Mouse and Rat Heart lysates (calculated MW of 110kD according to NP_001672.1). Recommended concentration: 0.1-0.3 ug/ml.
Uses:	IHC - Paraffin (5 µg/ml), Western blot (0.1 - 0.3 µg/ml), ELISA (1:128000) (Optimal dilution to be determined by the researcher)
Size:	50 µg
Concentration:	0.5 mg/ml

Immunohistochemistry Image:



Human Heart: Formalin-Fixed, Paraffin-Embedded (FFPE)

Western Blot Image:



ATP2A2 antibody (0.1 ug/ml) staining of Human (A), Mouse (B) and Rat (C) Heart lysates (35 ug protein in RIPA buffer). Primary incubation was 1 hour. Detected by chemiluminescence.

Requested From:

Japan

Laboratory Reagent For In Vitro Research Use Only

Not for resale without prior written consent from LifeSpan BioSciences, Inc.

Created on 9/23/2014

© 2014 LifeSpan BioSciences