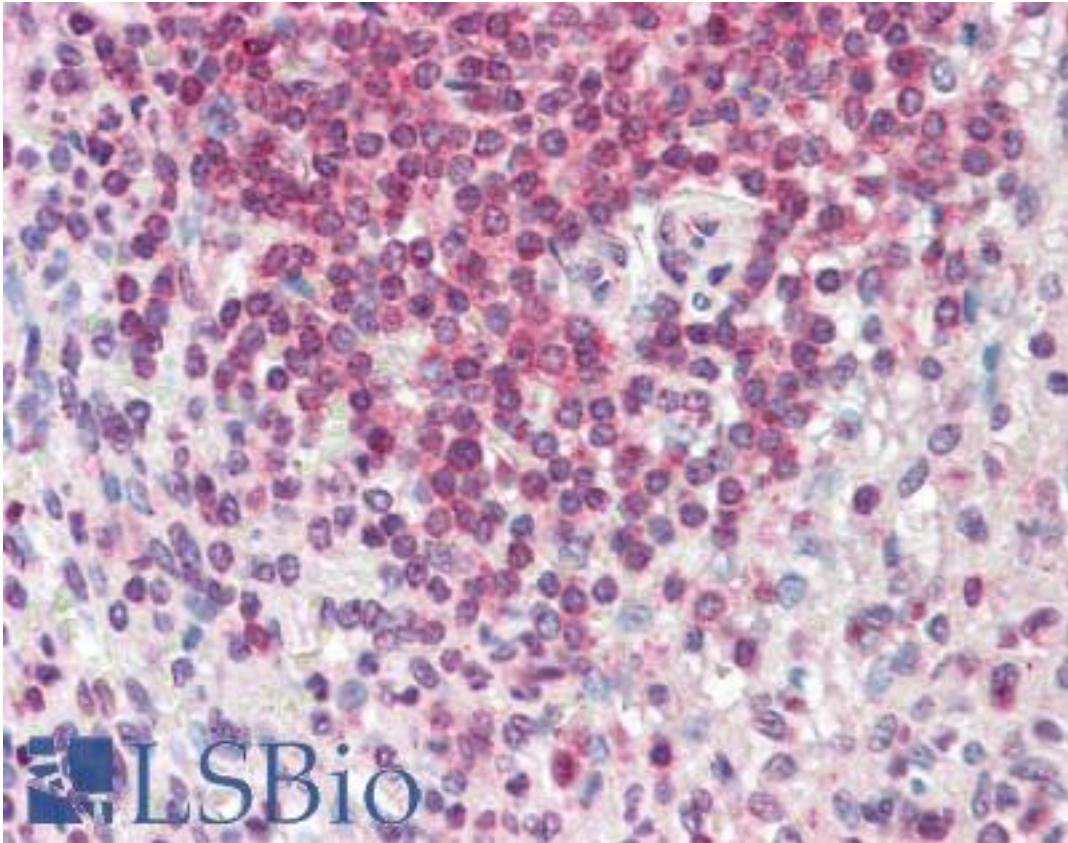


HMHA1 / HA1 Goat anti-Human Polyclonal (aa57-71) Antibody - LS-B10342 - LSBio

<b>CatalogID:</b>	LS-B10342
<b>Validation:</b>	This antibody replaces catalog number LS-C154963. It has been validated for use in the following assays: IHC-P.
<b>Target:</b>	histocompatibility (minor) HA-1 (HMHA1)
<b>Synonyms:</b>	HMHA1 Antibody, ARHGAP45 Antibody, HLA-HA1 Antibody, Ha-1 Antibody, KIAA0223 Antibody, HA1 Antibody
<b>Host</b>	HMHA1 antibody was produced in Goat
<b>Clonality:</b>	Polyclonal
<b>Immunogen Species:</b>	HMHA1 / HA1 antibody was raised against Human
<b>Antigen Type:</b>	Synthetic peptide
<b>Immunogen:</b>	HMHA1 / HA1 antibody was raised against synthetic peptide KATGTLKRPTSLSRH-C from the N-terminus of human HMHA1 / HA-1 (NP_036424.2). Percent identity by BLAST analysis: Human, Chimpanzee, Gorilla, Orangutan, Monkey, Galago, Hamster, Panda, Bovine, Dog, Porcine (100%); Mouse, Rat (93%); Opossum, Turkey, Chicken (87%); Zebra finch (80%).
<b>Specificity:</b>	Human HMHA1 / HA-1. To avoid confusion please note that this antibody is designed to recognise the whole protein as coded by NP_036424.2 and will not recognise the peptide found eluted from HLA-A*0201 molecules by den Haan et al (Science. 1998 Feb 13;279(5353):1054-7, PMID: 9461441)
<b>Epitope:</b>	aa57-71
<b>Reactivity:</b>	Human, Chimpanzee, Gorilla, Orangutan, Monkey, Bovine, Dog, Hamster
<b>Purification:</b>	Immunoaffinity purified
<b>Presentation:</b>	Tris-buffered saline, pH 7.3, 0.5% BSA, 0.02% sodium azide
<b>Recommended Storage:</b>	Store at -20°C. Minimize freezing and thawing.
<b>Usage Summary:</b>	Peptide ELISA: antibody detection limit dilution 1:128000. Western blot: Preliminary experiments gave an approx 200kD band in lysates of cell lines Jurkat and Molt4 after 0.05 ug/ml antibody staining. Please note that currently we cannot find an explanation in the literature for the band we observe given the calculated size of 125kD according to NP_036424.2. The 200kD band was successfully blocked by incubation with the immunizing peptide.
<b>Uses:</b>	IHC - Paraffin (5 µg/ml), ELISA (1:128000) (Optimal dilution to be determined by the researcher)
<b>Size:</b>	50 µg
<b>Concentration:</b>	0.5 mg/ml

**Immunohistochemistry Image:**



Human Spleen: Formalin-Fixed, Paraffin-Embedded (FFPE)

**Requested From:**

Japan

Laboratory Reagent For In Vitro Research Use Only

Not for resale without prior written consent from LifeSpan BioSciences, Inc.

Created on 9/23/2014

© 2014 LifeSpan BioSciences