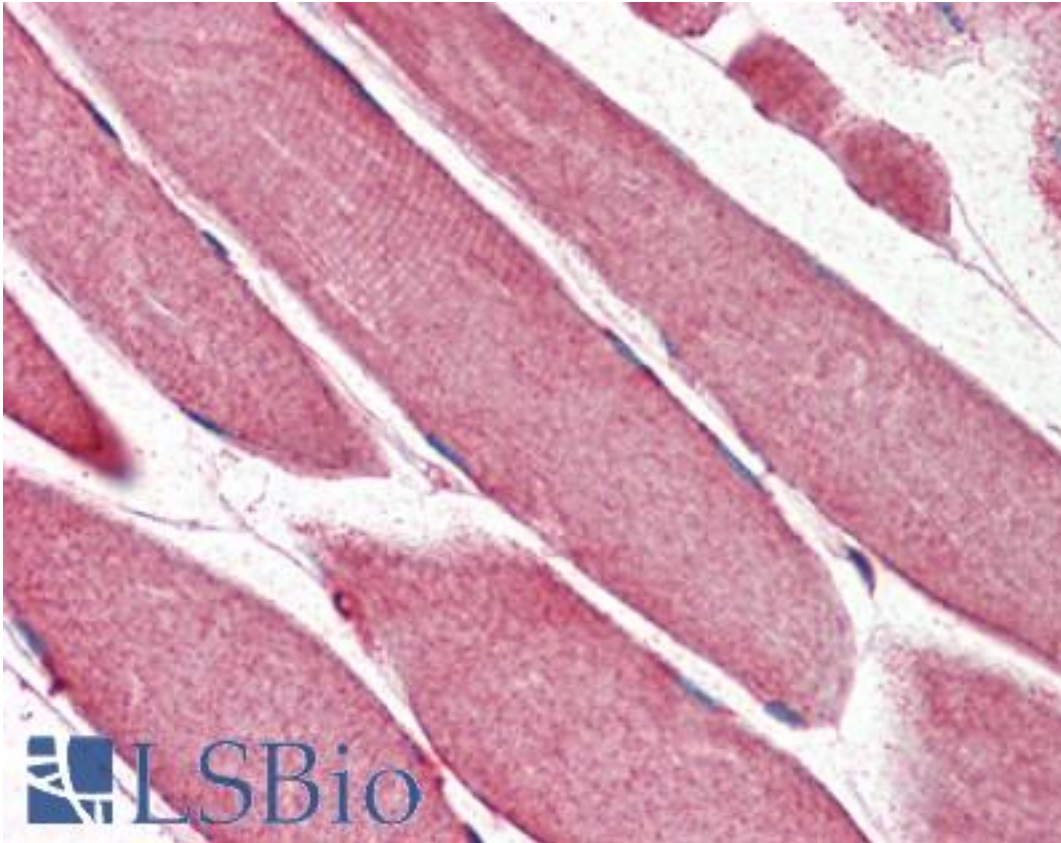


TRIM11 Goat anti-Human Polyclonal (aa249-263) Antibody - LS-B10341 - LSBio

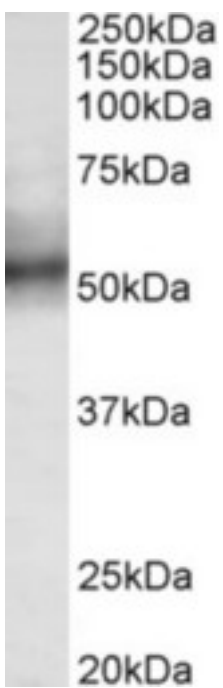
CatalogID:	LS-B10341
Validation:	This antibody replaces catalog number LS-C154895. It has been validated for use in the following assays: IHC-P.
Target:	tripartite motif containing 11 (TRIM11)
Synonyms:	TRIM11 Antibody, BIA1 Antibody, Protein BIA1 Antibody, RNF92 Antibody, RING finger protein 92 Antibody, Tripartite motif-containing 11 Antibody, Tripartite motif containing 11 Antibody
Family / Subfamily:	Tripartite Motif
Host	TRIM11 antibody was produced in Goat
Clonality:	Polyclonal
Immunogen Species:	TRIM11 antibody was raised against Human
Antigen Type:	Synthetic peptide
Immunogen:	TRIM11 antibody was raised against synthetic peptide C-DALRRVQDVKLQPPE from an internal region of human TRIM11 (NP_660215.1). Percent identity by BLAST analysis: Human, Chimpanzee, Gorilla, Orangutan, Gibbon, Monkey, Marmoset (100%); Elephant, Panda, Bovine (93%); Galago, Mouse, Rat, Dog, Horse, Guinea pig (87%); Bat, Rabbit (80%).
Specificity:	Human TRIM11.
Epitope:	aa249-263
Reactivity:	Human, Chimpanzee, Gorilla, Orangutan, Gibbon, Monkey
Purification:	Immunoaffinity purified
Presentation:	Tris-buffered saline, pH 7.3, 0.5% BSA, 0.02% sodium azide
Recommended Storage:	Store at -20°C. Minimize freezing and thawing.
Usage Summary:	Peptide ELISA: antibody detection limit dilution 1:32000. Western blot: Approx 52kD band observed in Human Spleen lysates (calculated MW of 52.8kD according to NP_660215.1). Recommended concentration: 0.3-1 ug/ml.
Uses:	IHC - Paraffin (5 µg/ml), Western blot (0.3 - 1 µg/ml), ELISA (1:32000) (Optimal dilution to be determined by the researcher)
Size:	50 µg
Concentration:	0.5 mg/ml

Immunohistochemistry Image:



Human Skeletal Muscle: Formalin-Fixed, Paraffin-Embedded (FFPE)

Western Blot Image:



TRIM11 antibody (0.3 ug/ml) staining of Human Spleen lysate (35 ug protein in RIPA buffer). Primary incubation was 1 hour. Detected by chemiluminescence.

Requested From:	Japan
Laboratory Reagent For In Vitro Research Use Only	
Not for resale without prior written consent from LifeSpan BioSciences, Inc.	
Created on 9/23/2014	
© 2014 LifeSpan BioSciences	