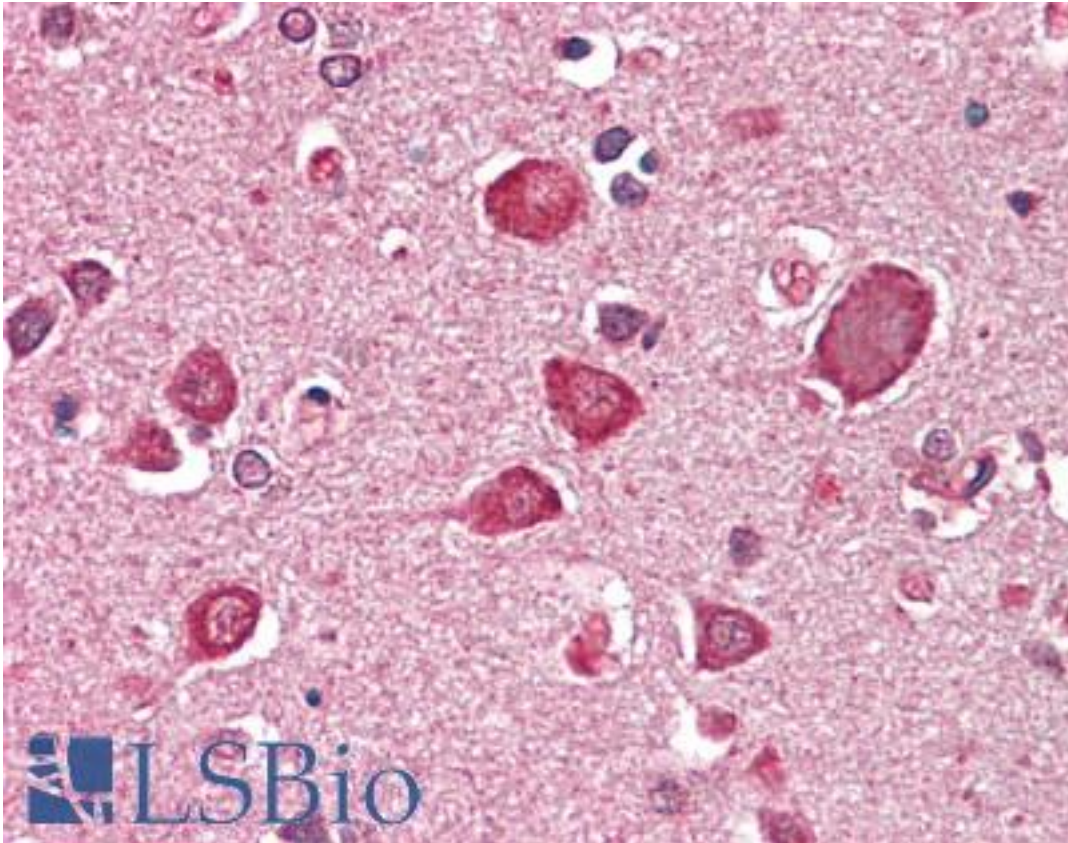


GABRA6 Goat anti-Human Polyclonal (aa15-26) Antibody - LS-B10335 - LSBio	
CatalogID:	LS-B10335
Validation:	This antibody replaces catalog number LS-C186502. It has been validated for use in the following assays: IHC-P.
Target:	gamma-aminobutyric acid (GABA) A receptor, alpha 6 (GABRA6)
Synonyms:	GABRA6 Antibody, GABA A receptor alpha 6 Antibody, GABA(A) receptor, alpha 6 Antibody
Family / Subfamily:	Ion Channel / GABA A receptor
Host	GABRA6 antibody was produced in Goat
Clonality:	Polyclonal
Immunogen Species:	GABRA6 antibody was raised against Human
Antigen Type:	Synthetic peptide
Immunogen:	GABRA6 antibody was raised against synthetic peptide ENALGKLEVEGN-C from the N-terminus of human GABRA6 (NP_000802.2). Percent identity by BLAST analysis: Human, Gorilla, Orangutan (100%); Chimpanzee, Gibbon, Galago, Bovine, Horse (92%); Monkey, Marmoset, Panda, Dog, Rabbit (83%).
Specificity:	Human GABRA6
Epitope:	aa15-26
Reactivity:	Human, Gorilla, Orangutan
Purification:	Immunoaffinity purified
Presentation:	Tris-buffered saline, pH 7.3, 0.5% BSA, 0.02% sodium azide
Recommended Storage:	Store at -20°C. Minimize freezing and thawing.
Usage Summary:	Peptide ELISA: antibody detection limit dilution 1:128000. Western blot: Preliminary experiments gave bands at approx 75kD and 37kD in Human Cerebellum lysates after 0.3 ug/ml antibody staining. Please note that currently we cannot find an explanation in the literature for the bands we observe given the calculated size of 51.0kD according to NP_000802.2. Both detected bands were successfully blocked by incubation with the immunizing peptide (and BLAST results with the immunizing peptide sequence did not identify any other proteins to explain the additional bands).
Uses:	IHC - Paraffin (5 µg/ml), ELISA (1:128000) (Optimal dilution to be determined by the researcher)
Size:	50 µg
Concentration:	0.5 mg/ml

Immunohistochemistry Image:



Human Brain, Cortex: Formalin-Fixed, Paraffin-Embedded (FFPE)

Requested From:

Japan

Laboratory Reagent For In Vitro Research Use Only

Not for resale without prior written consent from LifeSpan BioSciences, Inc.

Created on 9/23/2014

© 2014 LifeSpan BioSciences