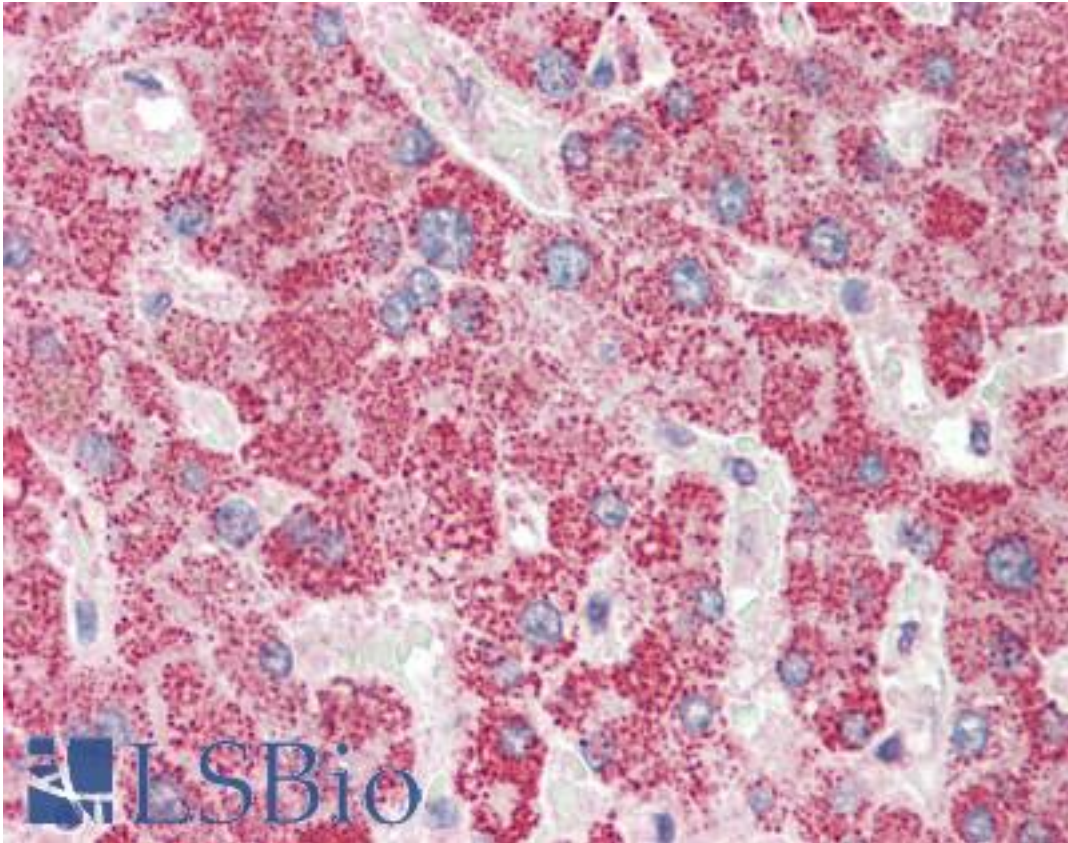


APOL6 / Apolipoprotein L 6 Goat anti-Human Polyclonal (N-Terminus) Antibody - LS-B10331 - LSBio

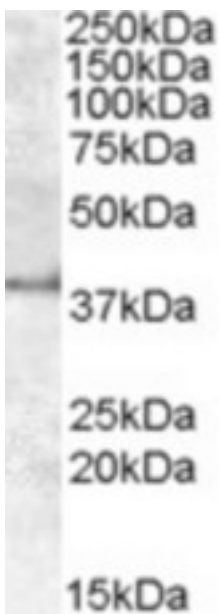
CatalogID:	LS-B10331
Validation:	This antibody replaces catalog number LS-C112770. It has been validated for use in the following assays: IHC-P.
Target:	apolipoprotein L, 6 (APOL6)
Synonyms:	APOL6 Antibody, APOLVI Antibody, Apolipoprotein L-VI Antibody, APOL-VI Antibody, Apolipoprotein L, 6 Antibody, Apolipoprotein L6 Antibody
Host	APOL6 antibody was produced in Goat
Clonality:	Polyclonal
Immunogen Species:	APOL6 / Apolipoprotein L 6 antibody was raised against Human
Antigen Type:	Synthetic peptide
Immunogen:	APOL6 / Apolipoprotein L 6 antibody was raised against synthetic peptide QRDEDDAPLCED from an internal region (near N-terminus) of human APOL6 / Apolipoprotein L 6 (NP_085144.1). Percent identity by BLAST analysis: Human, Chimpanzee, Gorilla, Monkey (100%); Orangutan, Marmoset (92%); Tamarin (83%).
Specificity:	Human APOL6 / Apolipoprotein L 6.
Epitope:	N-Terminus
Reactivity:	Human, Chimpanzee, Gorilla
Purification:	Immunoaffinity purified
Presentation:	Tris-buffered saline, pH 7.3, 0.5% BSA, 0.02% sodium azide
Recommended Storage:	Store at -20°C. Minimize freezing and thawing.
Usage Summary:	Peptide ELISA: antibody detection limit dilution 1:8000. Western blot: Approx. 38kDa band observed in Human Kidney lysates (calculated MW of 38.1kDa according to NP_085144.1). Recommended concentration: 1-3 ug/ml.
Uses:	IHC - Paraffin (5 µg/ml), Western blot (1 - 3 µg/ml), ELISA (1:8000) (Optimal dilution to be determined by the researcher)
Size:	50 µg

Immunohistochemistry Image:



Human Liver: Formalin-Fixed, Paraffin-Embedded (FFPE)

Western Blot Image:



APOL6 antibody (1 ug/ml) staining of Human Kidney lysate (35 ug protein/ml in RIPA buffer). Primary incubation was 1 hour. Detected by chemiluminescence.

Requested From:

Japan

Laboratory Reagent For In Vitro Research Use Only

Not for resale without prior written consent from LifeSpan BioSciences, Inc.

Created on 9/23/2014

© 2014 LifeSpan BioSciences