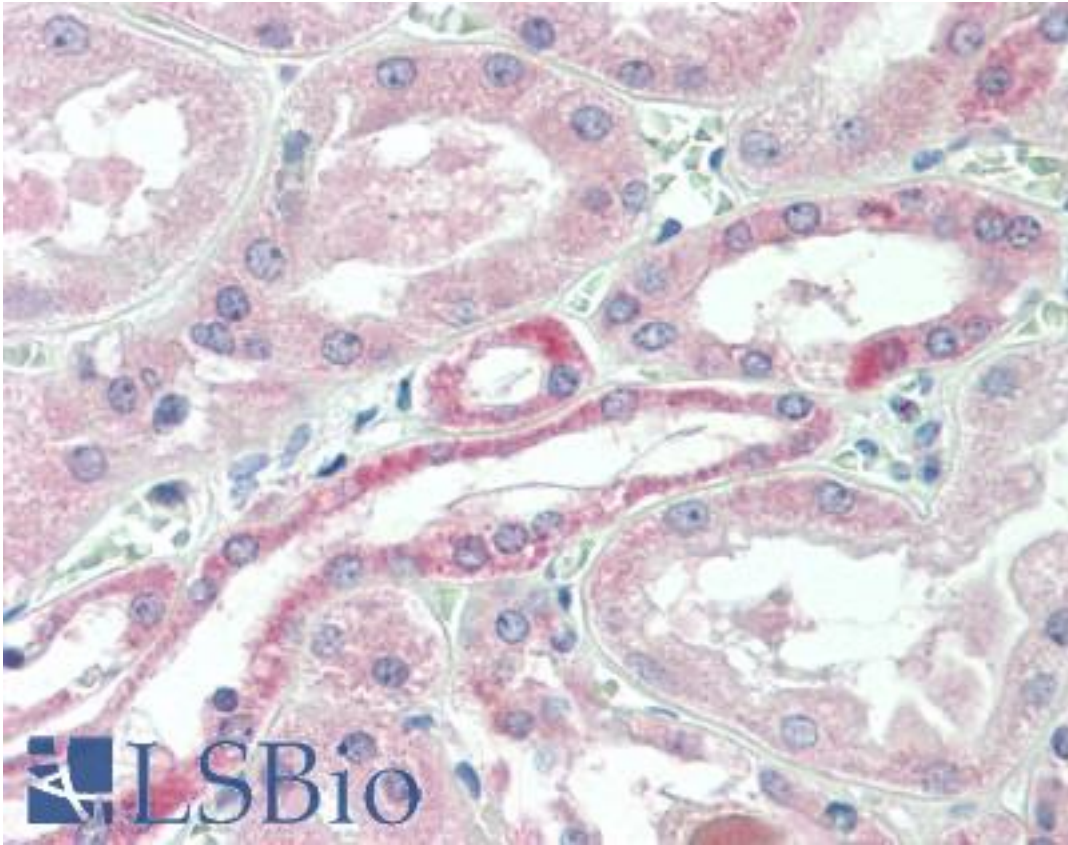


USP43 Goat anti-Human Polyclonal (Internal) Antibody - LS-B10330 - LSBio	
<b>CatalogID:</b>	LS-B10330
<b>Validation:</b>	This antibody replaces catalog number LS-C87307. It has been validated for use in the following assays: IHC-P.
<b>Target:</b>	ubiquitin specific peptidase 43 (USP43)
<b>Synonyms:</b>	USP43 Antibody, Deubiquitinating enzyme 43 Antibody, Ubiquitin specific protease 43 Antibody, Ubiquitin thioesterase 43 Antibody, Ubiquitin thiolesterase 43 Antibody
<b>Host</b>	USP43 antibody was produced in Goat
<b>Clonality:</b>	Polyclonal
<b>Immunogen Species:</b>	USP43 antibody was raised against Human
<b>Antigen Type:</b>	Synthetic peptide
<b>Immunogen:</b>	USP43 antibody was raised against synthetic peptide C-SQRTVPGEQASYGT from an internal region of human USP43 (NP_694942.3). Percent identity by BLAST analysis: Human, Gorilla, Gibbon, Monkey, Marmoset (100%); Mouse (86%).
<b>Specificity:</b>	Human USP43.
<b>Epitope:</b>	Internal
<b>Reactivity:</b>	Human, Gorilla, Gibbon, Monkey
<b>Purification:</b>	Immunoaffinity purified
<b>Presentation:</b>	Tris-buffered saline, pH 7.3, 0.5% BSA, 0.02% sodium azide
<b>Recommended Storage:</b>	Store at -20°C. Minimize freezing and thawing.
<b>Usage Summary:</b>	Peptide ELISA: antibody detection limit dilution 1:16000.
<b>Uses:</b>	IHC - Paraffin (5 - 10 µg/ml), ELISA (1:16000) (Optimal dilution to be determined by the researcher)
<b>Size:</b>	50 µg
<b>Concentration:</b>	0.5 mg/ml

**Immunohistochemistry Image:**



Human Kidney: Formalin-Fixed, Paraffin-Embedded (FFPE)

**Requested From:**

Japan

Laboratory Reagent For In Vitro Research Use Only

Not for resale without prior written consent from LifeSpan BioSciences, Inc.

Created on 9/23/2014

© 2014 LifeSpan BioSciences