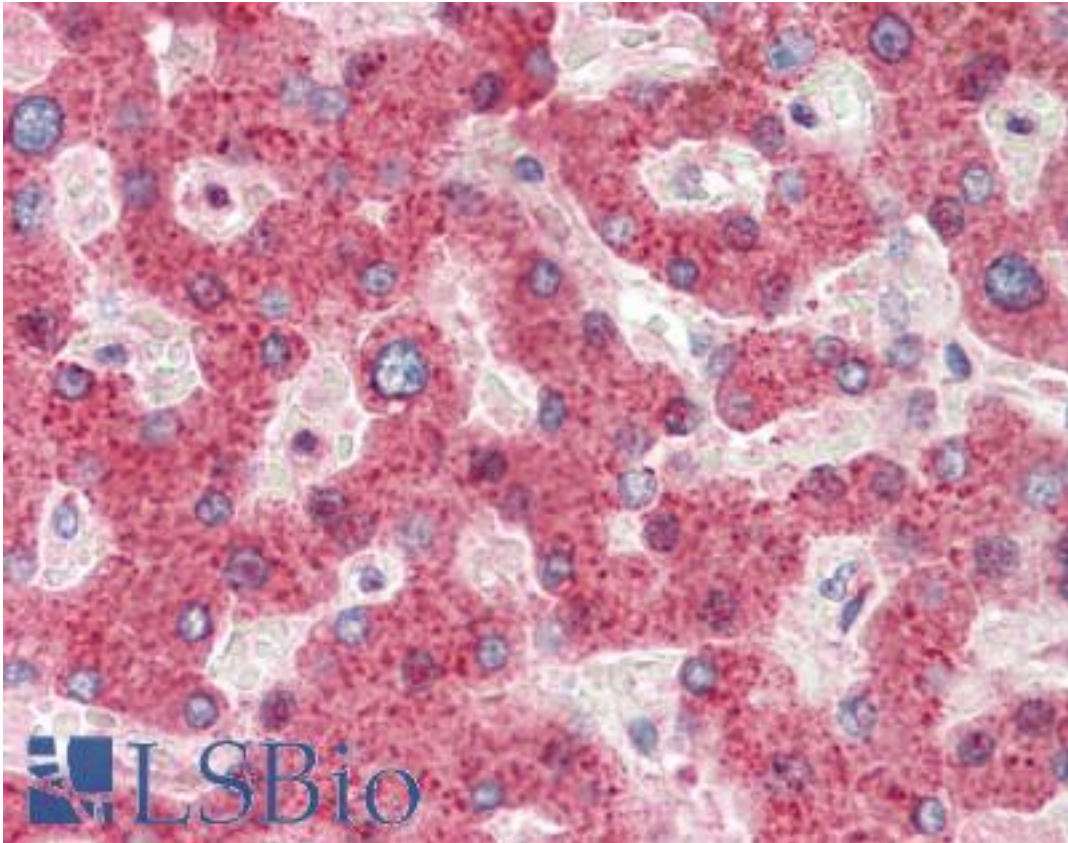


HRASLS2 Goat anti-Human Polyclonal (Internal) Antibody - LS-B10329 - LSBio	
<b>CatalogID:</b>	LS-B10329
<b>Validation:</b>	This antibody replaces catalog number LS-C87296. It has been validated for use in the following assays: IHC-P.
<b>Target:</b>	HRAS-like suppressor 2 (HRASLS2)
<b>Synonyms:</b>	HRASLS2 Antibody, HRAS-like suppressor 2 Antibody, PLA1/2-2 Antibody
<b>Host</b>	HRASLS2 antibody was produced in Goat
<b>Clonality:</b>	Polyclonal
<b>Immunogen Species:</b>	HRASLS2 antibody was raised against Human
<b>Antigen Type:</b>	Synthetic peptide
<b>Immunogen:</b>	HRASLS2 antibody was raised against synthetic peptide QELPYSLTSDNC from an internal region of human HRASLS2 (NP_060348.1). Percent identity by BLAST analysis: Human, Gorilla, Gibbon, Monkey (100%).
<b>Specificity:</b>	Human HRASLS2. This design was based on provisional sequence data.
<b>Epitope:</b>	Internal
<b>Reactivity:</b>	Human, Gorilla, Gibbon, Monkey
<b>Purification:</b>	Immunoaffinity purified
<b>Presentation:</b>	Tris-buffered saline, pH 7.3, 0.5% BSA, 0.02% sodium azide
<b>Recommended Storage:</b>	Store at -20°C. Minimize freezing and thawing.
<b>Usage Summary:</b>	Peptide ELISA: antibody detection limit dilution 1:16000.
<b>Uses:</b>	IHC - Paraffin (5 µg/ml), ELISA (1:16000) (Optimal dilution to be determined by the researcher)
<b>Size:</b>	50 µg
<b>Concentration:</b>	0.5 mg/ml

**Immunohistochemistry Image:**



Human Liver: Formalin-Fixed, Paraffin-Embedded (FFPE)

**Requested From:**

Japan

Laboratory Reagent For In Vitro Research Use Only

Not for resale without prior written consent from LifeSpan BioSciences, Inc.

Created on 9/23/2014

© 2014 LifeSpan BioSciences