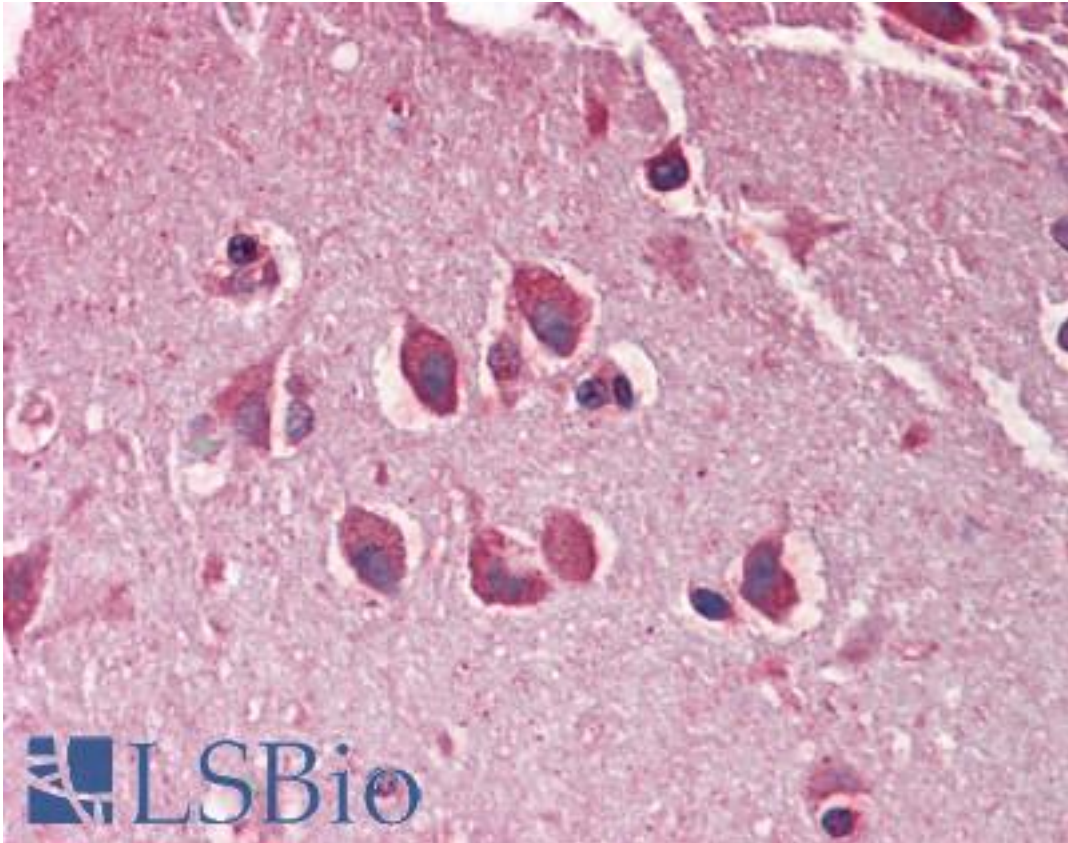


MXRA5 Goat anti-Human Polyclonal (Internal) Antibody - LS-B10325 - LSBio	
CatalogID:	LS-B10325
Validation:	This antibody replaces catalog number LS-C108912. It has been validated for use in the following assays: IHC-P.
Target:	matrix-remodelling associated 5 (MXRA5)
Synonyms:	MXRA5 Antibody, Adlican Antibody
Host	MXRA5 antibody was produced in Goat
Clonality:	Polyclonal
Immunogen Species:	MXRA5 antibody was raised against Human
Antigen Type:	Synthetic peptide
Immunogen:	MXRA5 antibody was raised against synthetic peptide C-QAETTTLDQDHLET from an internal region of human MXRA5 (NP_056234.2). Percent identity with other species by BLAST analysis: Human (100%), Gorilla (93%), Monkey (93%), Gibbon (86%).
Specificity:	Human MXRA5.
Epitope:	Internal
Reactivity:	Human
Purification:	Immunoaffinity purified
Presentation:	Tris-buffered saline, pH 7.3, 0.5% BSA, 0.02% sodium azide
Recommended Storage:	Store at -20°C. Minimize freezing and thawing.
Usage Summary:	Western Blot: Preliminary experiments in Human Brain (Hippocampus) and Skeletal Muscle lysates gave no specific signal but low background (at antibody concentration up to 1 ug/ml).
Uses:	IHC - Paraffin (5 µg/ml), ELISA (Optimal dilution to be determined by the researcher)
Size:	50 µg

Immunohistochemistry Image:



Human Brain, Cortex: Formalin-Fixed, Paraffin-Embedded (FFPE)

Requested From:

Japan

Laboratory Reagent For In Vitro Research Use Only

Not for resale without prior written consent from LifeSpan BioSciences, Inc.

Created on 9/23/2014

© 2014 LifeSpan BioSciences