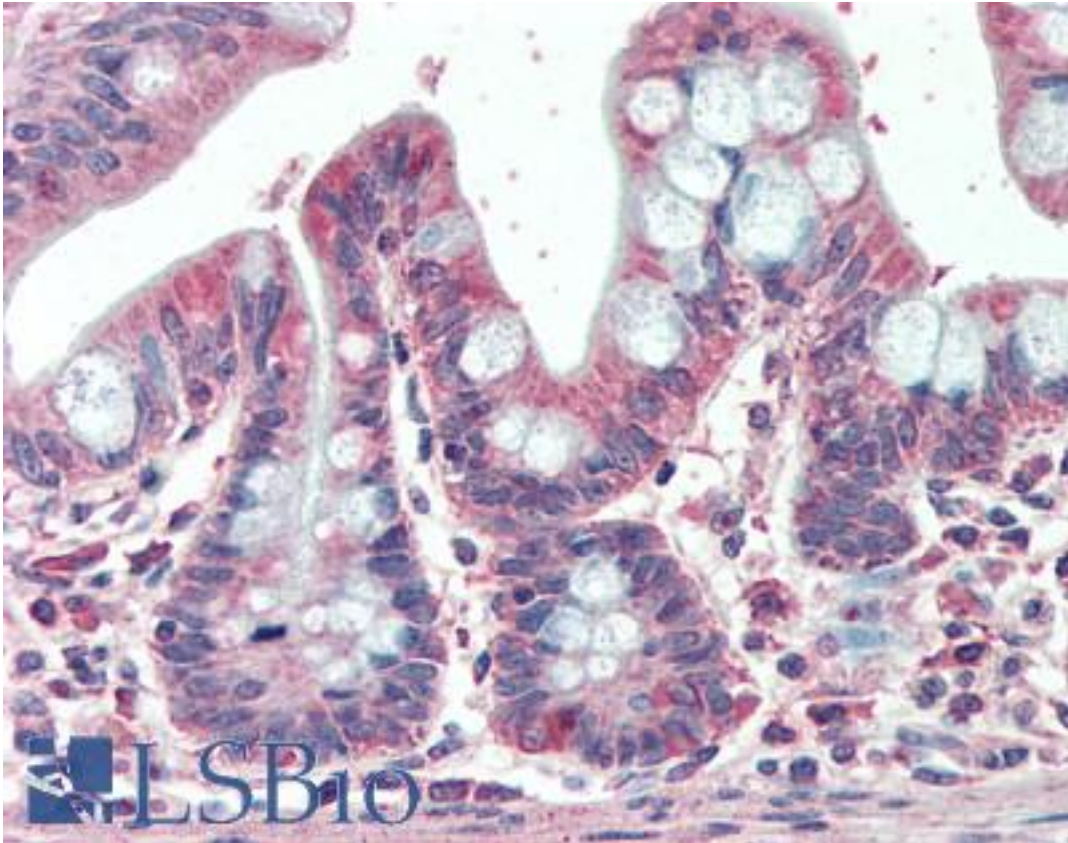


EML5 Goat anti-Human Polyclonal (Internal) Antibody - LS-B10324 - LSBio

CatalogID:	LS-B10324
Validation:	This antibody replaces catalog number LS-C112890. It has been validated for use in the following assays: IHC-P.
Target:	echinoderm microtubule associated protein like 5 (EML5)
Synonyms:	EML5 Antibody, EMAP-5 Antibody, EMAP-2 Antibody, HuEMAP-2 Antibody
Host	EML5 antibody was produced in Goat
Clonality:	Polyclonal
Immunogen Species:	EML5 antibody was raised against Human
Antigen Type:	Synthetic peptide
Immunogen:	EML5 antibody was raised against synthetic peptide C-QQKEPSIDERQG from an internal region of human EML5 (NP_899243.1). Percent identity by BLAST analysis: Human, Bat (100%); Monkey, Marmoset, Mouse, Rat, Elephant, Panda, Bovine, Horse (92%); Dog, Turkey, Xenopus (83%).
Specificity:	Human EML5.
Epitope:	Internal
Reactivity:	Human, Bat
Purification:	Immunoaffinity purified
Presentation:	Tris-buffered saline, pH 7.3, 0.5% BSA, 0.02% sodium azide
Recommended Storage:	Store at -20°C. Minimize freezing and thawing.
Usage Summary:	Peptide ELISA: antibody detection limit dilution 1:32000. Western blot: Preliminary experiments in Human Brain (Cerebellum, Cerebral Cortex and Hippocampus) lysates gave no specific signal but low background (at antibody concentration up to 1 ug/ml).
Uses:	IHC - Paraffin (5 µg/ml), ELISA (1:32000) (Optimal dilution to be determined by the researcher)
Size:	50 µg

Immunohistochemistry Image:



Human Small Intestine: Formalin-Fixed, Paraffin-Embedded (FFPE)

Requested From:

Japan

Laboratory Reagent For In Vitro Research Use Only

Not for resale without prior written consent from LifeSpan BioSciences, Inc.

Created on 9/23/2014

© 2014 LifeSpan BioSciences