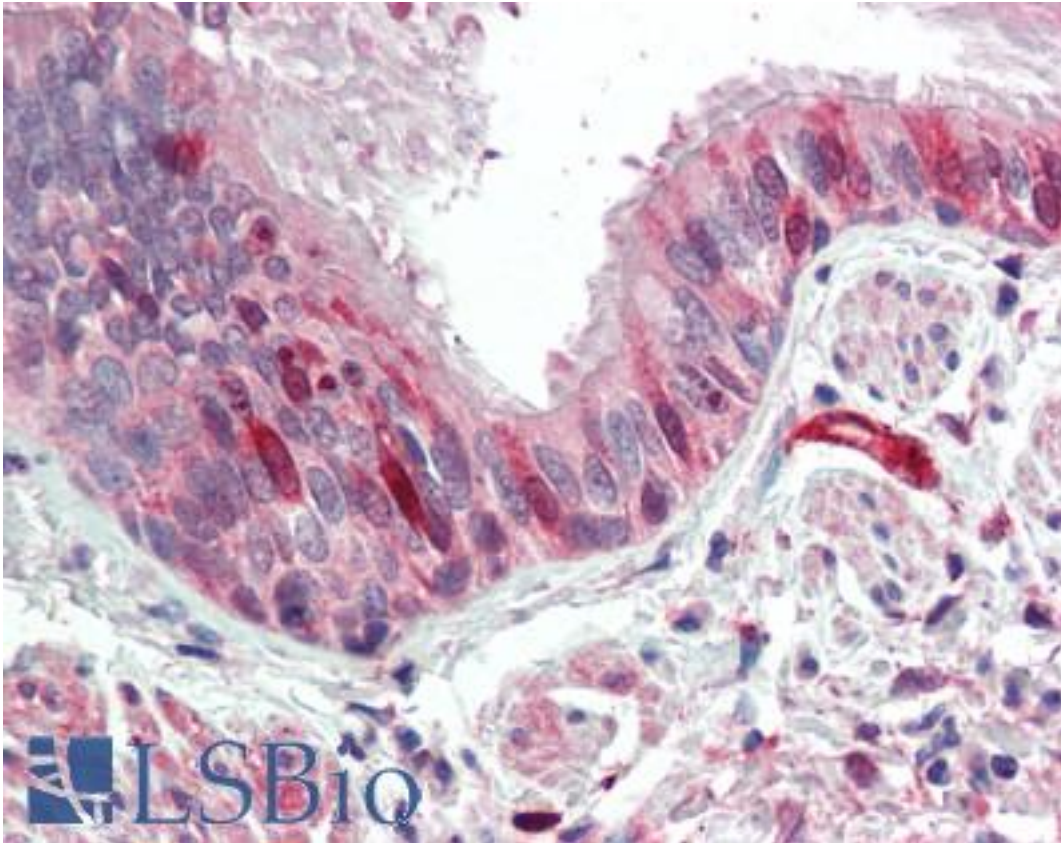


CNN3 Goat anti-Human Polyclonal (C-Terminus) Antibody - LS-B10322 - LSBio

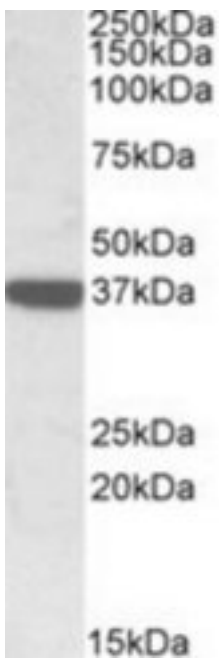
CatalogID:	LS-B10322
Validation:	This antibody replaces catalog number LS-C112850. It has been validated for use in the following assays: IHC-P.
Target:	calponin 3, acidic (CNN3)
Synonyms:	CNN3 Antibody, Acidic Calponin Antibody, Calponin-3 Antibody, Calponin 3, acidic Antibody, Calponin, acidic isoform Antibody
Host	CNN3 antibody was produced in Goat
Clonality:	Polyclonal
Immunogen Species:	CNN3 antibody was raised against Human
Antigen Type:	Synthetic peptide
Immunogen:	CNN3 antibody was raised against synthetic peptide C-HGEYQDDYPRDYQYS from the C-terminus of human CNN3 (NP_001830.1). Percent identity by BLAST analysis: Human, Gorilla, Gibbon, Monkey, Platypus (100%); Marmoset, Bovine, Horse (93%); Elephant, Panda, Pig (87%); Mouse, Dog (80%).
Specificity:	Human CNN3.
Epitope:	C-Terminus
Reactivity:	Human, Gorilla, Gibbon
Purification:	Immunoaffinity purified
Presentation:	Tris-buffered saline, pH 7.3, 0.5% BSA, 0.02% sodium azide
Recommended Storage:	Store at -20°C. Minimize freezing and thawing.
Usage Summary:	Peptide ELISA: antibody detection limit dilution 1:64000. Western blot: Approx 37kDa band observed in Human Duodenum, Heart and Kidney lysates (calculated MW of 36.4kDa according to NP_001830.1). Recommended concentration: 0.2-0.6 ug/ml.
Uses:	IHC - Paraffin (5 µg/ml), Western blot (0.2 - 0.6 µg/ml), ELISA (1:64000) (Optimal dilution to be determined by the researcher)
Size:	50 µg

Immunohistochemistry Image:



Human Bronchus: Formalin-Fixed, Paraffin-Embedded (FFPE)

Western Blot Image:



CNN3 antibody (0.3 ug/ml) staining of Human Duodenum lysate (35 ug protein/ml in RIPA buffer). Primary incubation was 1 hour. Detected by chemiluminescence.

Requested From:	Japan
Laboratory Reagent For In Vitro Research Use Only	
Not for resale without prior written consent from LifeSpan BioSciences, Inc.	
Created on 9/23/2014	
© 2014 LifeSpan BioSciences	