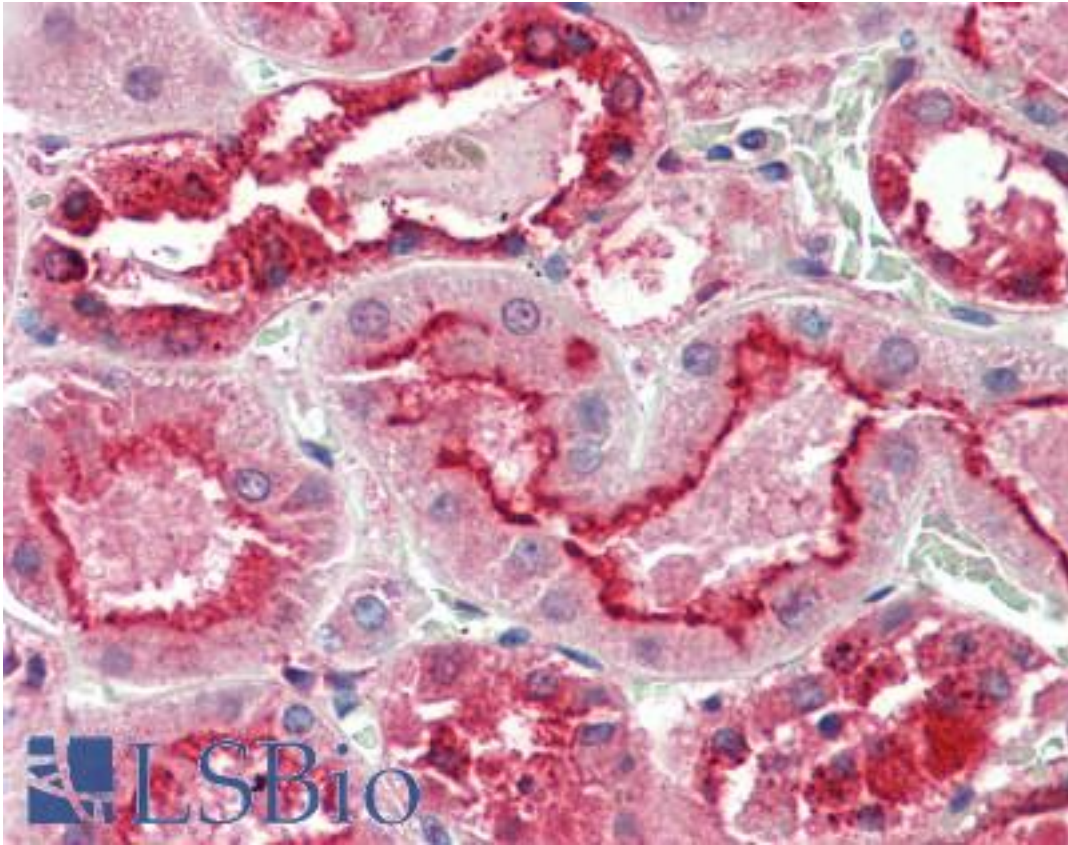


GGCX Goat anti-Human Polyclonal (C-Terminus) Antibody - LS-B10319 - LSBio

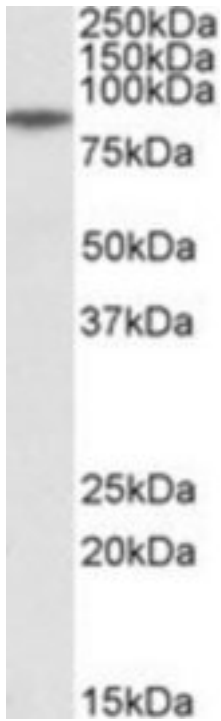
CatalogID:	LS-B10319
Validation:	This antibody replaces catalog number LS-C108129. It has been validated for use in the following assays: IHC-P.
Target:	gamma-glutamyl carboxylase (GGCX)
Synonyms:	GGCX Antibody, Gamma-glutamyl carboxylase Antibody, VKCFD1 Antibody
Host	GGCX antibody was produced in Goat
Clonality:	Polyclonal
Immunogen Species:	GGCX antibody was raised against Human
Antigen Type:	Synthetic peptide
Immunogen:	GGCX antibody was raised against synthetic peptide C-PPESNPDPVHSE from the C-terminus of human GGCX (NP_000812.2; NP_001135741.1). Percent identity by BLAST analysis: Human, Gorilla, Orangutan, Gibbon, Monkey, Marmoset (100%); Elephant, Panda (83%).
Specificity:	Human GGCX. This antibody is expected to recognize both isoforms (NP_000812.2; NP_001135741.1).
Epitope:	C-Terminus
Reactivity:	Human, Gorilla, Orangutan, Gibbon, Monkey
Purification:	Immunoaffinity purified
Presentation:	Tris-buffered saline, pH 7.3, 0.5% BSA, 0.02% sodium azide
Recommended Storage:	Store at -20°C. Minimize freezing and thawing.
Usage Summary:	Western Blot: Approx 85kD band observed in Human Muscle lysates (calculated MW of 85kD according to NP_000812.2). Recommended concentration: 0.3-1 ug/ml.
Uses:	IHC - Paraffin (5 µg/ml), Western blot (0.3 - 1 µg/ml), ELISA (Optimal dilution to be determined by the researcher)
Size:	50 µg

Immunohistochemistry Image:



Human Kidney: Formalin-Fixed, Paraffin-Embedded (FFPE)

Western Blot Image:



GGCX antibody (0.3 ug/ml) staining of Human Muscle lysate (35 ug protein in RIPA buffer).
Primary incubation was 1 hour. Detected by chemiluminescence.

Requested From:

Japan

Laboratory Reagent For In Vitro Research Use Only

Not for resale without prior written consent from LifeSpan BioSciences, Inc.

Created on 9/23/2014

© 2014 LifeSpan BioSciences