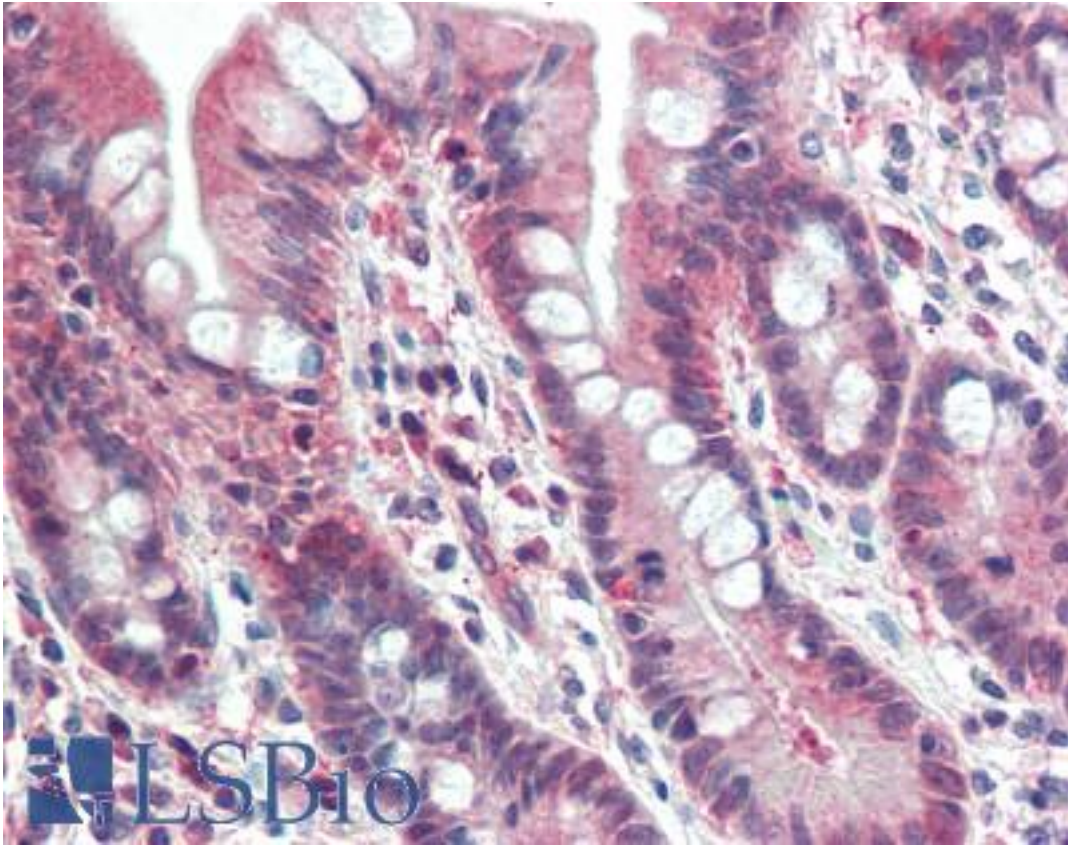


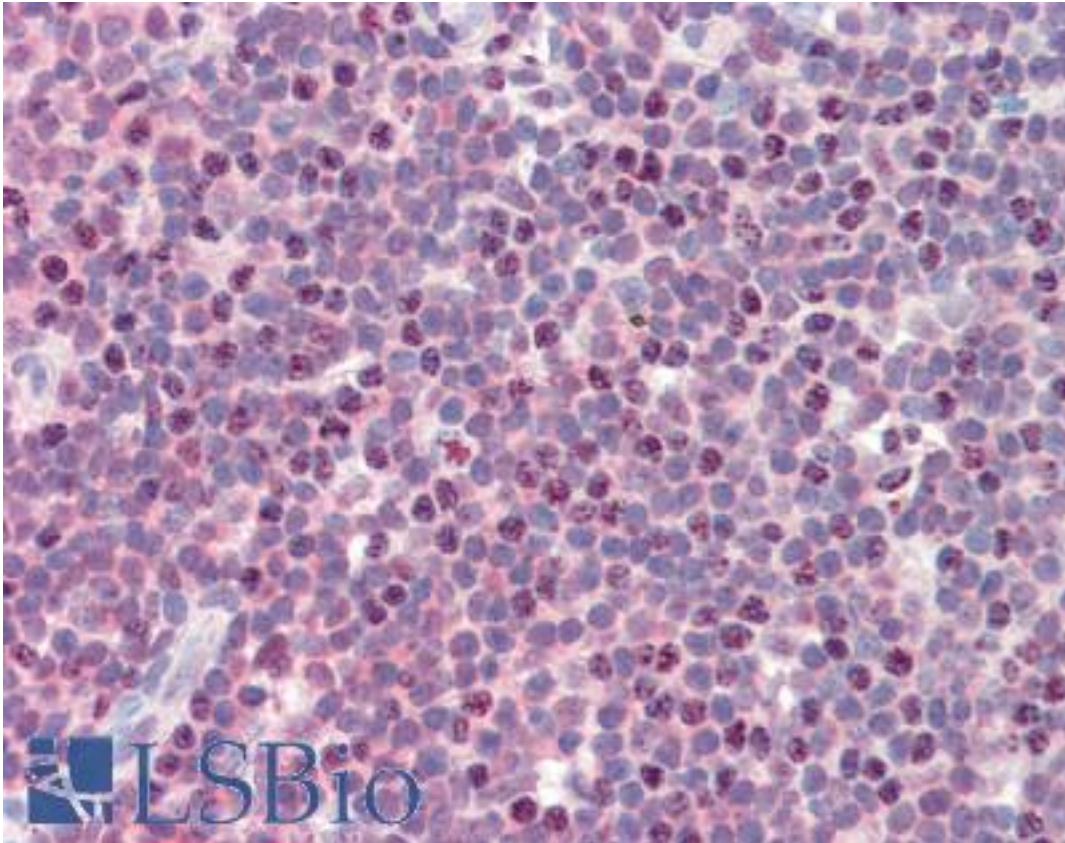
PSMB10 Goat anti-Human Polyclonal (Internal) Antibody - LS-B10305 - LSBio	
CatalogID:	LS-B10305
Validation:	This antibody replaces catalog number LS-C112797. It has been validated for use in the following assays: IHC-P.
Target:	proteasome (prosome, macropain) subunit, beta type, 10 (PSMB10)
Synonyms:	PSMB10 Antibody, Beta2i Antibody, Low molecular mass protein 10 Antibody, MECL1 Antibody, Proteasome component mecl-1 Antibody, Proteasome subunit beta-2i Antibody, Proteasome subunit beta 7i Antibody, Macropain subunit MECL-1 Antibody, Proteasome MECL-1 Antibody, LMP10 Antibody, Proteasome subunit MECL1 Antibody
Family / Subfamily:	Protease Non Catalytic / Threonine T1
Host	PSMB10 antibody was produced in Goat
Clonality:	Polyclonal
Immunogen Species:	PSMB10 antibody was raised against Human
Antigen Type:	Synthetic peptide
Immunogen:	PSMB10 antibody was raised against synthetic peptide C-PTEPVKRSGRYH from an internal region of human PSMB10 (NP_002792.1). Percent identity by BLAST analysis: Human, Gibbon (100%); Gorilla, Monkey, Marmoset (92%); Elephant (83%).
Specificity:	Human PSMB10.
Epitope:	Internal
Reactivity:	Human, Gibbon
Purification:	Immunoaffinity purified
Presentation:	Tris-buffered saline, pH 7.3, 0.5% BSA, 0.02% sodium azide
Recommended Storage:	Store at -20°C. Minimize freezing and thawing.
Usage Summary:	Peptide ELISA: antibody detection limit dilution 1:8000. Western blot: Approx 26kDa band observed in Human, Liver, Lung and Lymph Node lysates (calculated MW of 28.9kDa according to NP_002792.1). Recommended concentration: 0.3-1 ug/ml.
Uses:	IHC - Paraffin (5 µg/ml), Western blot (0.3 - 1 µg/ml), ELISA (1:8000) (Optimal dilution to be determined by the researcher)
Size:	50 µg

Immunohistochemistry Image:



Human Small Intestine: Formalin-Fixed, Paraffin-Embedded (FFPE)

Immunohistochemistry Image:



Human Tonsil: Formalin-Fixed, Paraffin-Embedded (FFPE)

Western Blot Image:



PSMB10 antibody (0.3 ug/ml) staining of Human Lung lysate (35 ug protein/ml in RIPA buffer). Primary incubation was 1 hour. Detected by chemiluminescence.

Requested From:

Japan

Laboratory Reagent For In Vitro Research Use Only

Not for resale without prior written consent from LifeSpan BioSciences, Inc.

Created on 9/23/2014

© 2014 LifeSpan BioSciences