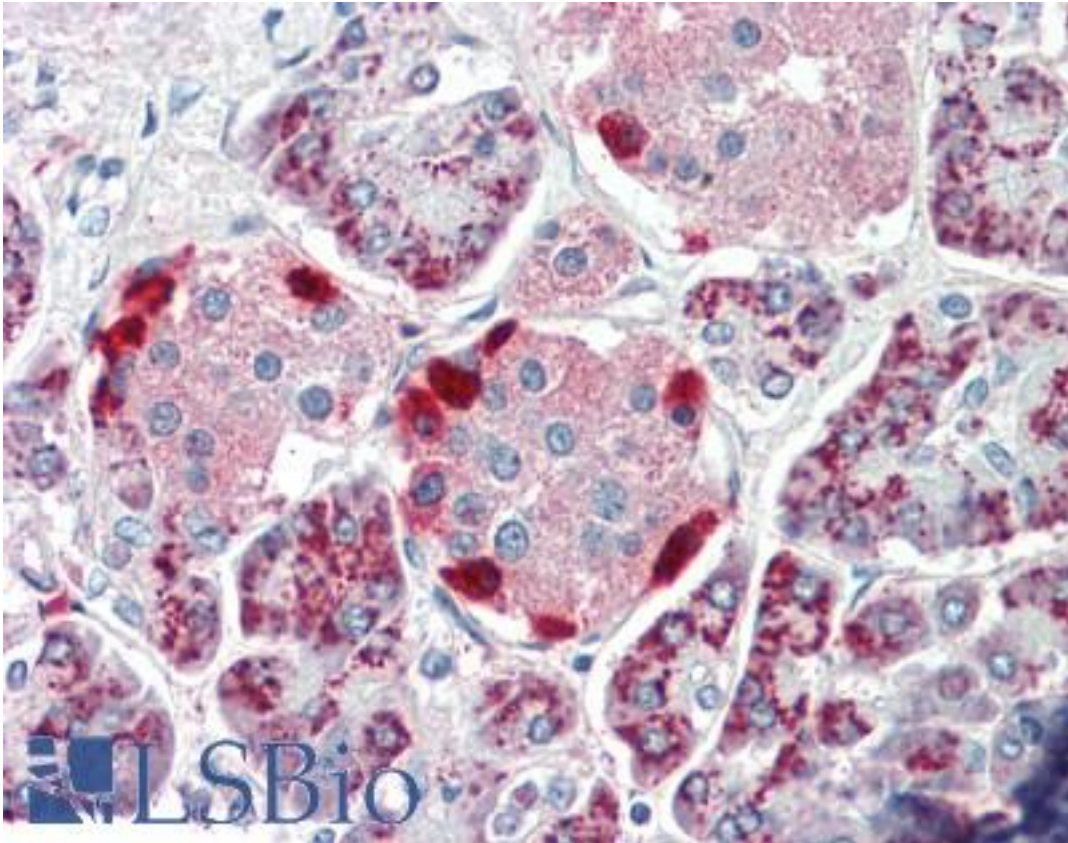


PEBP4 Goat anti-Human Polyclonal (C-Terminus) Antibody - LS-B10304 - LSBio

CatalogID:	LS-B10304
Validation:	This antibody replaces catalog number LS-C108900. It has been validated for use in the following assays: IHC-P.
Target:	phosphatidylethanolamine-binding protein 4 (PEBP4)
Synonyms:	PEBP4 Antibody, CORK1 Antibody, CORK-1 Antibody, GWTM1933 Antibody, HPEBP4 Antibody, PEPB4 Antibody, Cousin-of-RKIP 1 protein Antibody, PEBP-4 Antibody, PRO4408 Antibody, Protein cousin-of-RKIP 1 Antibody
Host	PEBP4 antibody was produced in Goat
Clonality:	Polyclonal
Immunogen Species:	PEBP4 antibody was raised against Human
Antigen Type:	Synthetic peptide
Immunogen:	PEBP4 antibody was raised against synthetic peptide C-RERASEPKHKNQAE from the C-terminus of human PEBP4 (NP_659399.2). Percent identity with other species by BLAST analysis: Human (100%), Gorilla (86%).
Specificity:	Human PEBP4.
Epitope:	C-Terminus
Reactivity:	Human
Purification:	Immunoaffinity purified
Presentation:	Tris-buffered saline, pH 7.3, 0.5% BSA, 0.02% sodium azide
Recommended Storage:	Store at -20°C. Minimize freezing and thawing.
Usage Summary:	Western Blot: Approx 26kD band observed in Human Heart lysates (calculated MW of 25.7kD according to NP_659399.2). Recommended concentration: 1-3 ug/ml. An additional band of unknown identity was also consistently observed at 30kD. This band was successfully blocked by incubation with the immunizing peptide.
Uses:	IHC - Paraffin (5 µg/ml), Western blot (1 - 3 µg/ml), ELISA (Optimal dilution to be determined by the researcher)
Size:	50 µg

Immunohistochemistry Image:



Human Pancreas: Formalin-Fixed, Paraffin-Embedded (FFPE)

Western Blot Image:



PEBP4 antibody (1 ug/ml) staining of Human Heart lysate (35 ug protein in RIPA buffer). Primary incubation was 1 hour. Detected by chemiluminescence.

Requested From:

Japan

Laboratory Reagent For In Vitro Research Use Only

Not for resale without prior written consent from LifeSpan BioSciences, Inc.

Created on 9/23/2014

© 2014 LifeSpan BioSciences