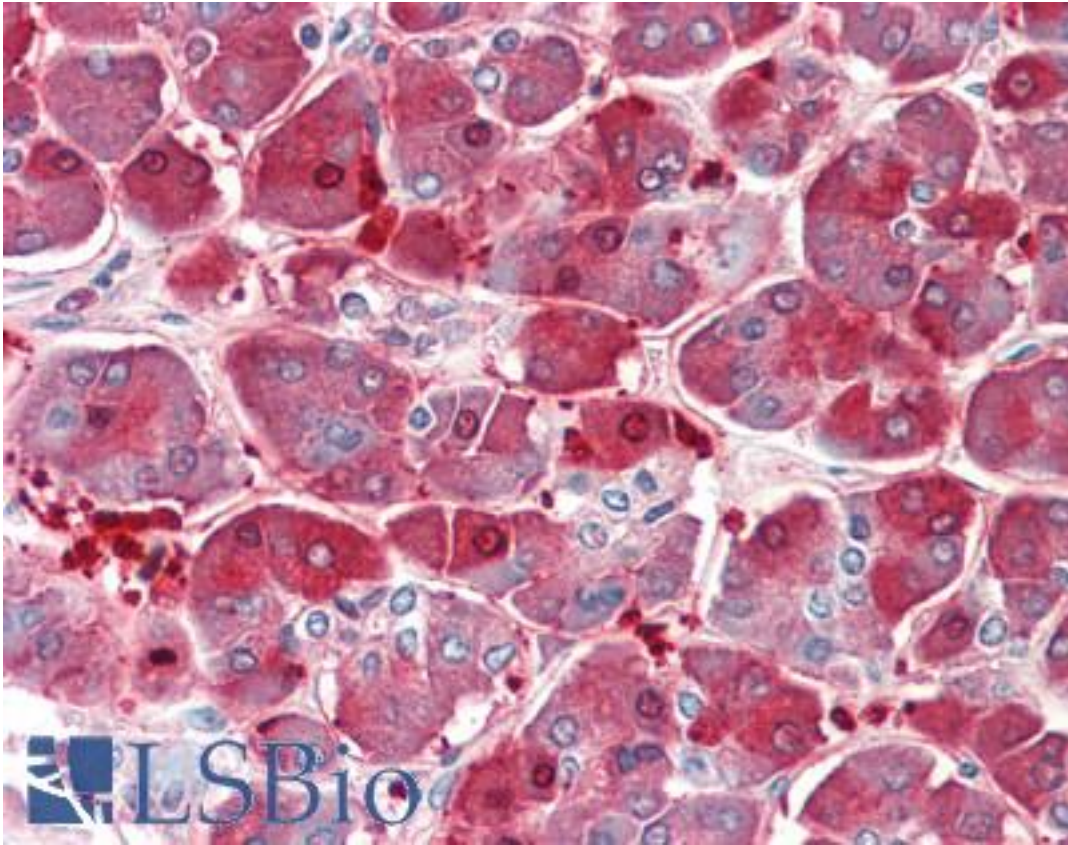


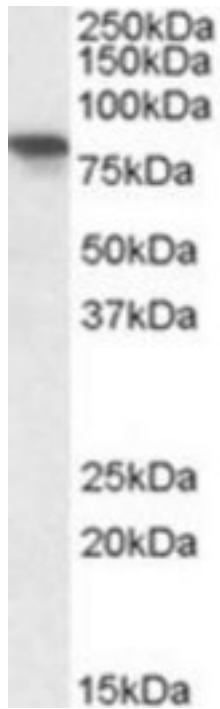
XPNPEP1 / Aminopeptidase P Goat anti-Human Polyclonal (C-Terminus) Antibody - LS-B10303 - LSBio	
CatalogID:	LS-B10303
Validation:	This antibody replaces catalog number LS-C112857. It has been validated for use in the following assays: IHC-P.
Target:	X-prolyl aminopeptidase (aminopeptidase P) 1, soluble (XPNPEP1)
Synonyms:	XPNPEP1 Antibody, Aminopeptidase P, cytosolic Antibody, APP1 Antibody, SAMP Antibody, Xaa-Pro aminopeptidase 1 Antibody, XPNPEPL Antibody, X-Pro aminopeptidase 1 Antibody, XPNPEP Antibody, XPNPEPL1 Antibody, Cytosolic aminopeptidase P Antibody, Soluble aminopeptidase P Antibody
Family / Subfamily:	Exopeptidase / not assigned-Exopeptidase
Host	XPNPEP1 antibody was produced in Goat
Clonality:	Polyclonal
Immunogen Species:	XPNPEP1 / Aminopeptidase P antibody was raised against Human
Antigen Type:	Synthetic peptide
Immunogen:	XPNPEP1 / Aminopeptidase P antibody was raised against synthetic peptide C-LIRETQPISKQH from the C-terminus of human XPNPEP1 (NP_065116.2; NP_001161076.1). Percent identity by BLAST analysis: Human, Gibbon, Monkey, Marmoset, Panda, Dog, Pig (100%); Elephant, Bovine, Horse, Platypus (92%); Hamster, Lizard, Xenopus (83%).
Specificity:	Human XPNPEP1. This antibody is expected to recognize isoform 1 and 2 (NP_065116.2; NP_001161076.1).
Epitope:	C-Terminus
Reactivity:	Human, Gibbon, Monkey, Dog, Pig
Purification:	Immunoaffinity purified
Presentation:	Tris-buffered saline, pH 7.3, 0.5% BSA, 0.02% sodium azide
Recommended Storage:	Store at -20°C. Minimize freezing and thawing.
Usage Summary:	Peptide ELISA: antibody detection limit dilution 1:32000. Western blot: Approx 80kDa band observed in Human Heart, Skeletal Muscle and Pancreas lysates (calculated MW of 69.9kDa according to NP_065116.2). Recommended concentration: 0.3-1 ug/ml.
Uses:	IHC - Paraffin (5 µg/ml), Western blot (0.3 - 1 µg/ml), ELISA (1:32000) (Optimal dilution to be determined by the researcher)
Size:	50 µg

Immunohistochemistry Image:



Human Pancreas: Formalin-Fixed, Paraffin-Embedded (FFPE)

Western Blot Image:



XPNPEP1 antibody (0.3 ug/ml) staining of Human Pancreas lysate (35 ug protein/ml in RIPA buffer). Primary incubation was 1 hour. Detected by chemiluminescence.

Requested From:

Japan

Laboratory Reagent For In Vitro Research Use Only

Not for resale without prior written consent from LifeSpan BioSciences, Inc.

Created on 9/23/2014

© 2014 LifeSpan BioSciences