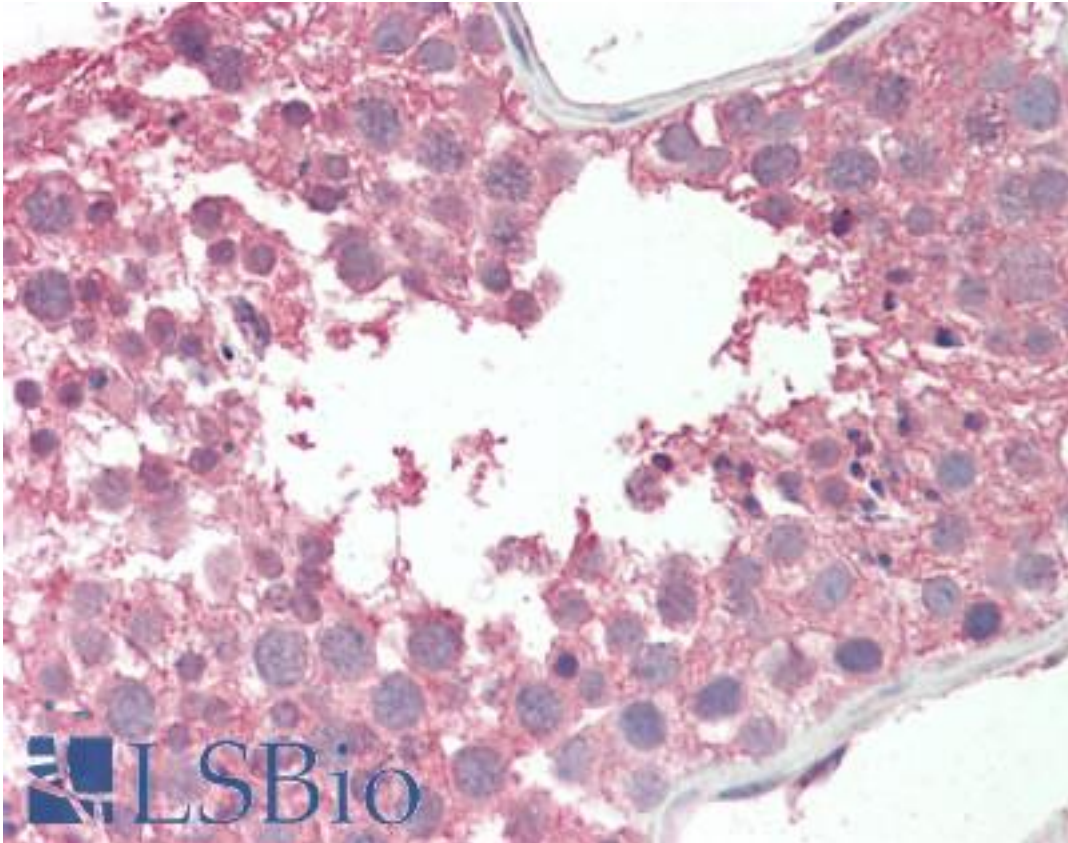


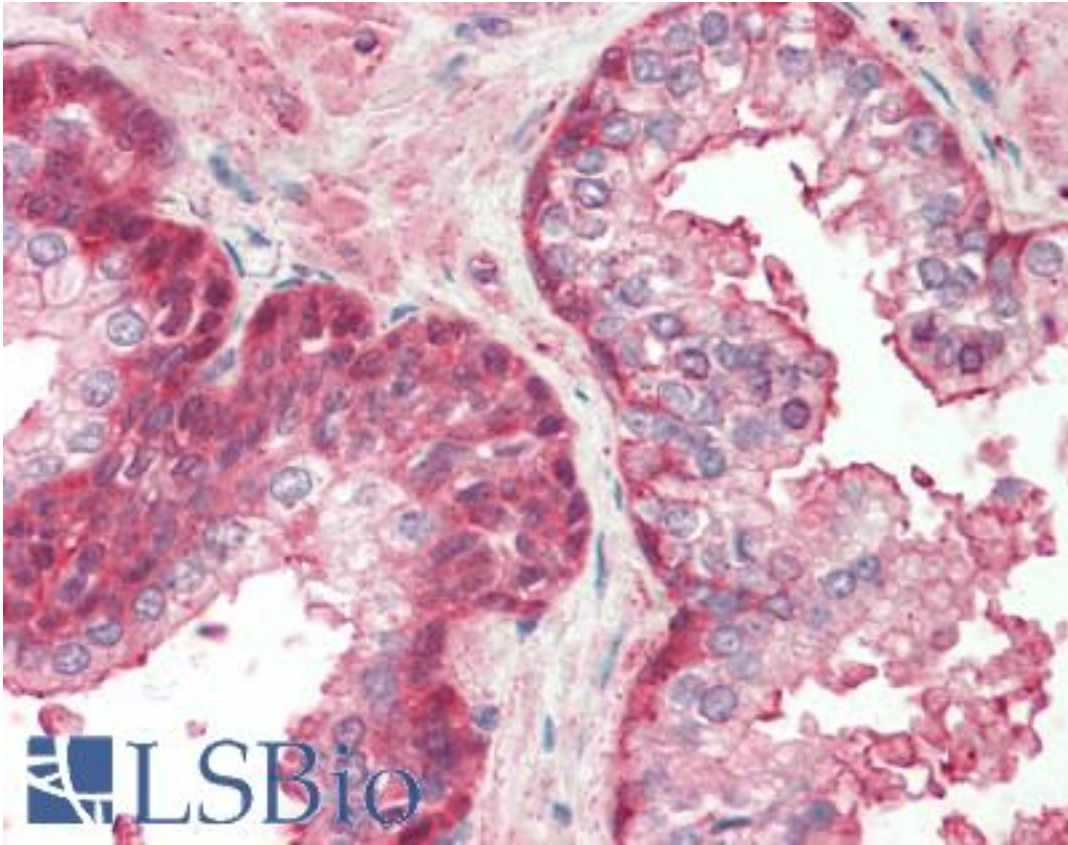
RCBTB2 Goat anti-Human Polyclonal (Internal) Antibody - LS-B10300 - LSBio	
<b>CatalogID:</b>	LS-B10300
<b>Validation:</b>	This antibody replaces catalog number LS-C112707. It has been validated for use in the following assays: IHC-P.
<b>Target:</b>	regulator of chromosome condensation (RCC1) and BTB (POZ) domain containing protein 2 (RCBTB2)
<b>Synonyms:</b>	RCBTB2 Antibody, Chromosome condensation 1-like Antibody, CHC1-L Antibody, RCC1-like G exchanging factor Antibody, RLG Antibody, CHC1L Antibody
<b>Host</b>	RCBTB2 antibody was produced in Goat
<b>Clonality:</b>	Polyclonal
<b>Immunogen Species:</b>	RCBTB2 antibody was raised against Human
<b>Antigen Type:</b>	Synthetic peptide
<b>Immunogen:</b>	RCBTB2 antibody was raised against synthetic peptide CEHFRSSLEDNEDD from an internal region of human RCBTB2 (NP_001259.1). Percent identity by BLAST analysis: Human, Gorilla, Orangutan, Gibbon, Marmoset, Bovine (100%); Mouse, Rat, Panda, Rabbit, Horse (93%); Hamster, Elephant, Bat, Pig (86%).
<b>Specificity:</b>	Human RCBTB2. This antibody is not expected to cross-react with RCBTB1.
<b>Epitope:</b>	Internal
<b>Reactivity:</b>	Human, Gorilla, Orangutan, Gibbon, Monkey, Bovine
<b>Purification:</b>	Immunoaffinity purified
<b>Presentation:</b>	Tris-buffered saline, pH 7.3, 0.5% BSA, 0.02% sodium azide
<b>Recommended Storage:</b>	Store at -20°C. Minimize freezing and thawing.
<b>Usage Summary:</b>	Peptide ELISA: antibody detection limit dilution 1:2000.
<b>Uses:</b>	IHC - Paraffin (5 µg/ml), ELISA (1:2000) (Optimal dilution to be determined by the researcher)
<b>Size:</b>	50 µg

**Immunohistochemistry Image:**



Human Testis: Formalin-Fixed, Paraffin-Embedded (FFPE)

**Immunohistochemistry Image:**



Human Prostate: Formalin-Fixed, Paraffin-Embedded (FFPE)

**Requested From:**

Japan

Laboratory Reagent For In Vitro Research Use Only

Not for resale without prior written consent from LifeSpan BioSciences, Inc.

Created on 9/23/2014

© 2014 LifeSpan BioSciences