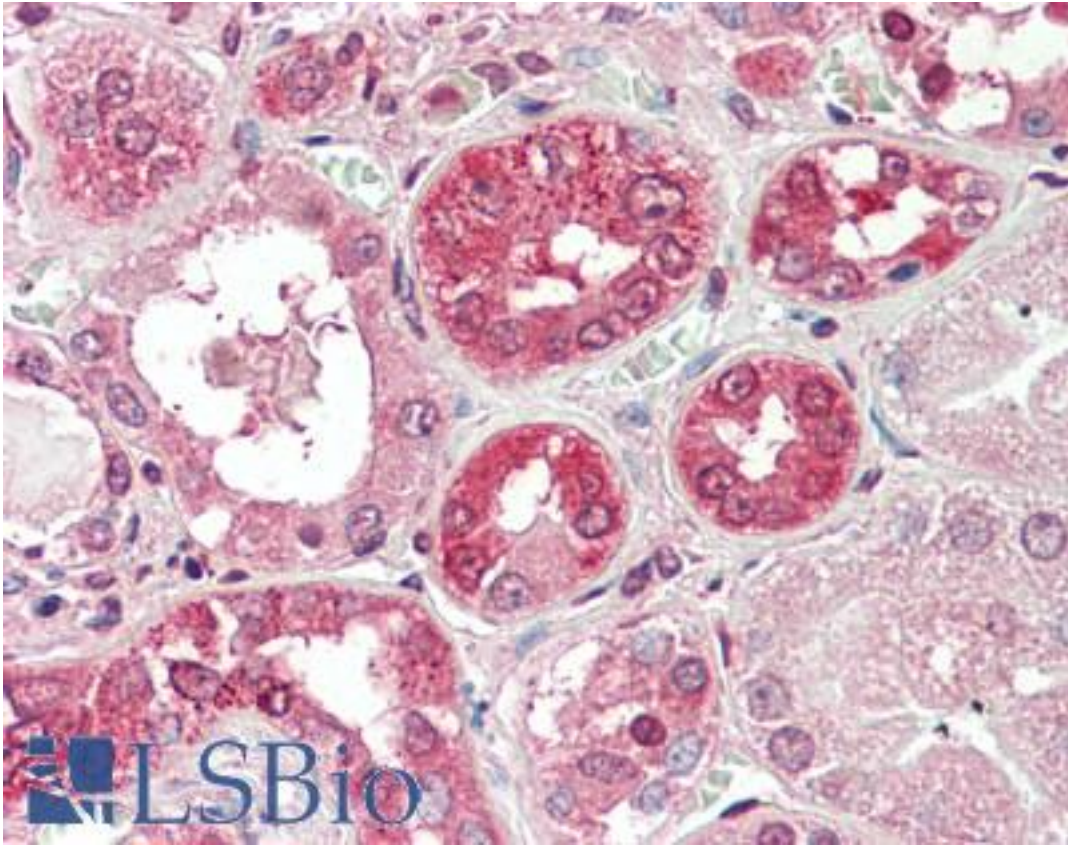


COG8 Goat anti-Human Polyclonal (Internal) Antibody - LS-B10298 - LSBio

CatalogID:	LS-B10298
Validation:	This antibody replaces catalog number LS-C112771. It has been validated for use in the following assays: IHC-P.
Target:	component of oligomeric golgi complex 8 (COG8)
Synonyms:	COG8 Antibody, CDG2H Antibody, Dor1 Antibody, COG complex subunit 8 Antibody, Dependent on RIC1 Antibody
Host	COG8 antibody was produced in Goat
Clonality:	Polyclonal
Immunogen Species:	COG8 antibody was raised against Human
Antigen Type:	Synthetic peptide
Immunogen:	COG8 antibody was raised against synthetic peptide C-KAIQETVEKFQEE from an internal region of human COG8 (NP_115758.3). Percent identity by BLAST analysis: Human, Gorilla, Gibbon, Monkey (100%); Marmoset, Panda, Dog, Bat, Bovine, Horse, Rabbit, Pig (85%).
Specificity:	Human COG8.
Epitope:	Internal
Reactivity:	Human, Gorilla, Gibbon, Monkey
Purification:	Immunoaffinity purified
Presentation:	Tris-buffered saline, pH 7.3, 0.5% BSA, 0.02% sodium azide
Recommended Storage:	Store at -20°C. Minimize freezing and thawing.
Usage Summary:	Peptide ELISA: antibody detection limit dilution 1:16000.
Uses:	IHC - Paraffin (5 µg/ml), ELISA (1:16000) (Optimal dilution to be determined by the researcher)
Size:	50 µg

Immunohistochemistry Image:



Human Kidney: Formalin-Fixed, Paraffin-Embedded (FFPE)

Requested From:

Japan

Laboratory Reagent For In Vitro Research Use Only

Not for resale without prior written consent from LifeSpan BioSciences, Inc.

Created on 9/23/2014

© 2014 LifeSpan BioSciences