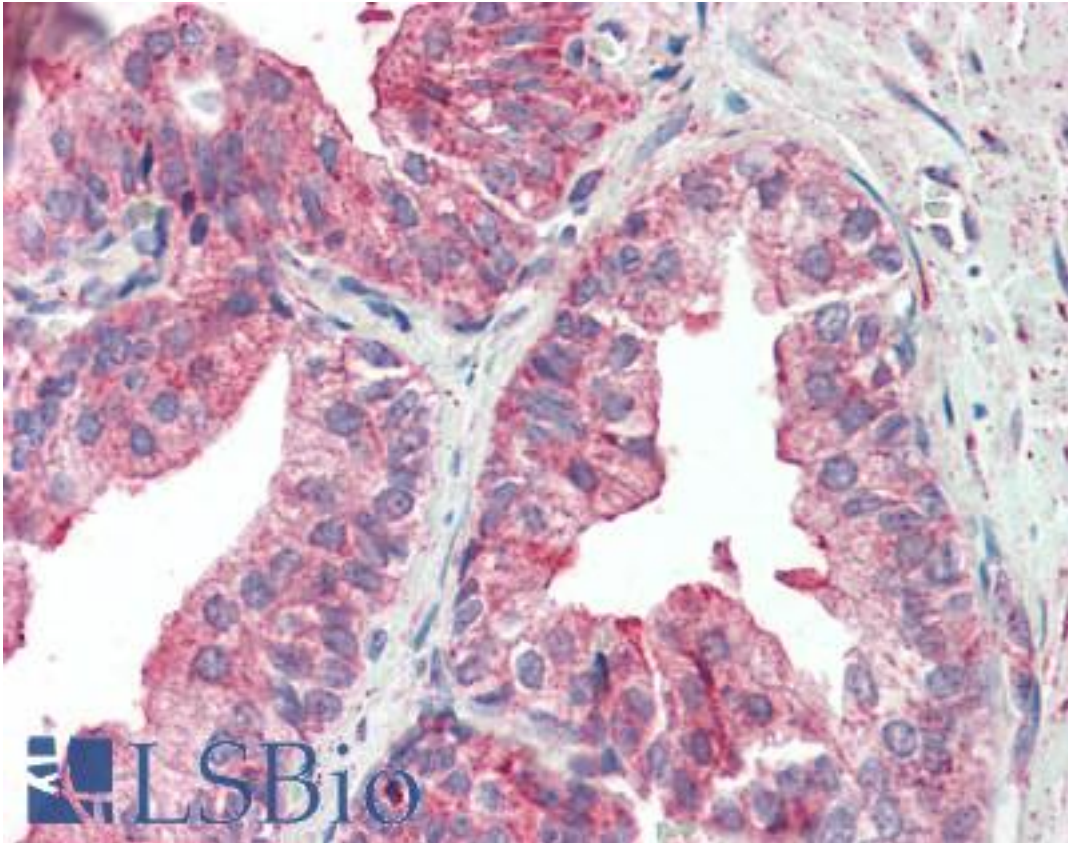


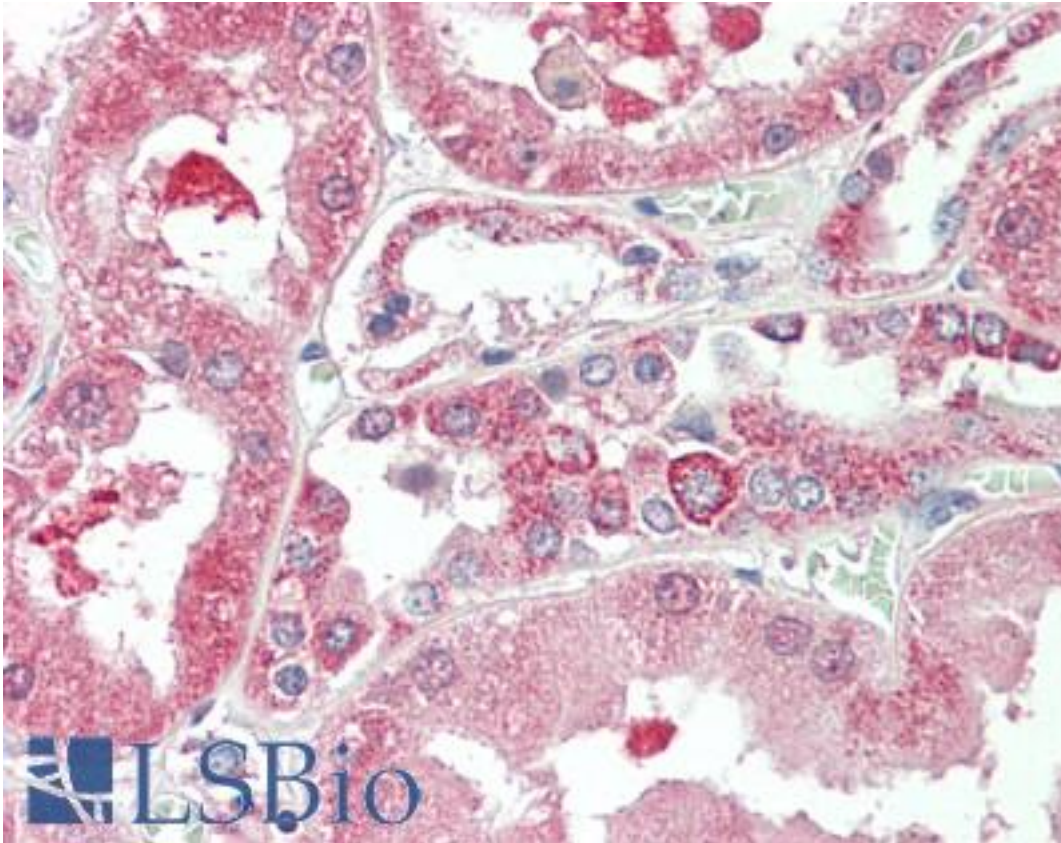
KIF6 Goat anti-Human Polyclonal (Internal) Antibody - LS-B10297 - LSBio	
CatalogID:	LS-B10297
Validation:	This antibody replaces catalog number LS-C108116. It has been validated for use in the following assays: IHC-P.
Target:	kinesin family member 6 (KIF6)
Synonyms:	KIF6 Antibody, C6orf102 Antibody, DJ188D3.1 Antibody, DJ1043E3.1 Antibody, DJ137F1.4 Antibody, Kinesin family member 6 Antibody, Kinesin-like protein KIF6 Antibody
Host	KIF6 antibody was produced in Goat
Clonality:	Polyclonal
Immunogen Species:	KIF6 antibody was raised against Human
Antigen Type:	Synthetic peptide
Immunogen:	KIF6 antibody was raised against synthetic peptide C-DPDQNIHLKNLTLH from an internal region of human KIF6 (NP_659464.3). Percent identity by BLAST analysis: Human, Gorilla, Gibbon, Monkey (100%); Marmoset, Mouse, Rat, Panda, Dog, Bovine, Rabbit, Pig (93%); Turkey, Chicken, Xenopus, Zebrafish (86%).
Specificity:	Human KIF6.
Epitope:	Internal
Reactivity:	Human, Gorilla, Gibbon
Purification:	Immunoaffinity purified
Presentation:	Tris-buffered saline, pH 7.3, 0.5% BSA, 0.02% sodium azide
Recommended Storage:	Store at -20°C. Minimize freezing and thawing.
Uses:	IHC - Paraffin (5 µg/ml), ELISA (Optimal dilution to be determined by the researcher)
Size:	50 µg

Immunohistochemistry Image:



Human Prostate: Formalin-Fixed, Paraffin-Embedded (FFPE)

Immunohistochemistry Image:



Human Kidney: Formalin-Fixed, Paraffin-Embedded (FFPE)

Requested From:

Japan

Laboratory Reagent For In Vitro Research Use Only

Not for resale without prior written consent from LifeSpan BioSciences, Inc.

Created on 9/23/2014

© 2014 LifeSpan BioSciences