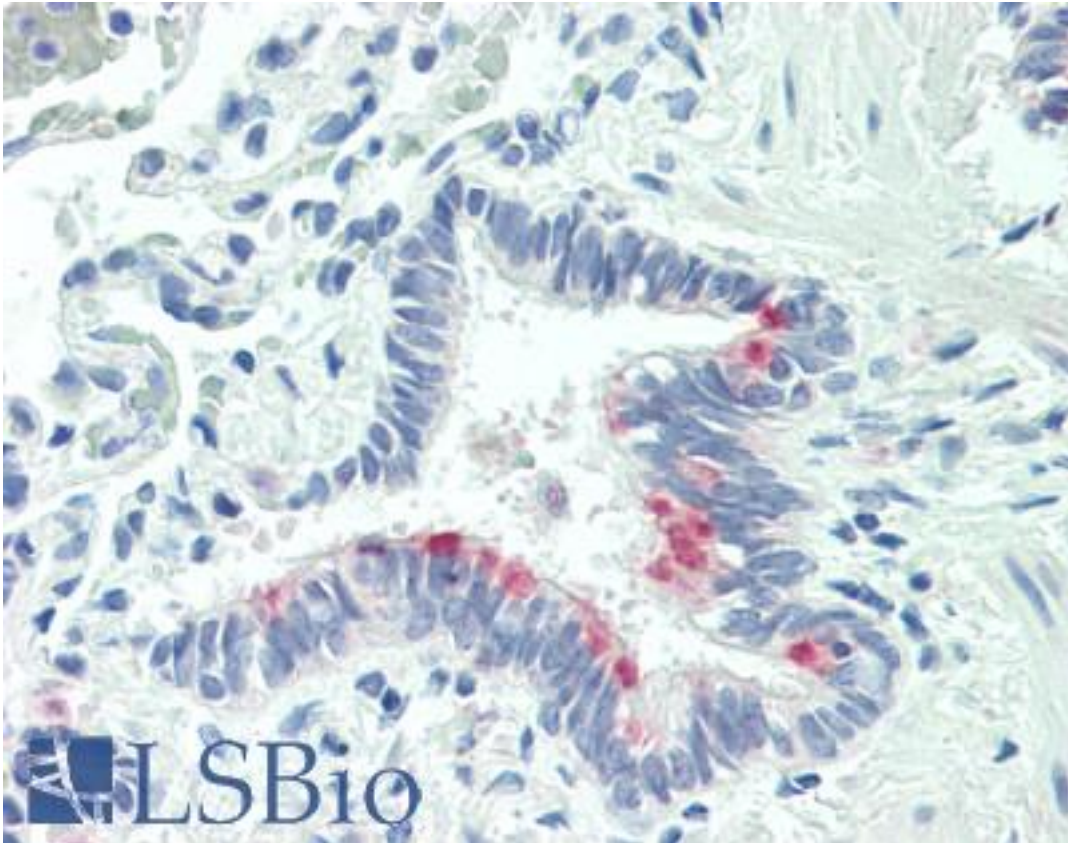


HsT19268 / MTHFS Goat anti-Human Polyclonal (Internal) Antibody - LS-B10296 - LSBio

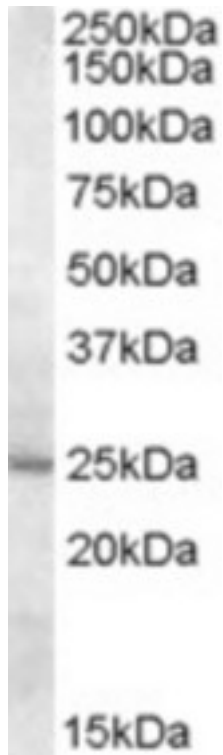
CatalogID:	LS-B10296
Validation:	This antibody replaces catalog number LS-C87259. It has been validated for use in the following assays: IHC-P.
Target:	5,10-methenyltetrahydrofolate synthetase (5-formyltetrahydrofolate cyclo-ligase) (MTHFS)
Synonyms:	MTHFS Antibody, HsT19268 Antibody, Methenyl-THF synthetase Antibody
Host	MTHFS antibody was produced in Goat
Clonality:	Polyclonal
Immunogen Species:	HsT19268 / MTHFS antibody was raised against Human
Antigen Type:	Synthetic peptide
Immunogen:	HsT19268 / MTHFS antibody was raised against synthetic peptide KRCLQHQEVKPYT from an internal region of human MTHFS (NP_006432.1). Percent identity by BLAST analysis: Human, Gorilla, Gibbon, Monkey, Marmoset, Horse (100%); Mouse, Hamster, Elephant, Opossum (92%); Rat, Bovine, Pig (85%).
Specificity:	Human MTHFS.
Epitope:	Internal
Reactivity:	Human, Gorilla, Gibbon, Monkey, Horse
Purification:	Immunoaffinity purified
Presentation:	Tris-buffered saline, pH 7.3, 0.5% BSA, 0.02% sodium azide
Recommended Storage:	Store at -20°C. Minimize freezing and thawing.
Usage Summary:	Peptide ELISA: antibody detection limit dilution 1:32000. Western Blot: Approx 25kD band observed in Human Liver lysates (calculated MW of 23.3kD according to NP_006432.1). Recommended concentration: 0.5-1.5 ug/ml.
Uses:	IHC - Paraffin (5 µg/ml), Western blot (0.5 - 1.5 µg/ml), ELISA (1:32000) & (0.5 - 1.5 µg/ml) (Optimal dilution to be determined by the researcher)
Size:	50 µg
Concentration:	0.5 mg/ml

Immunohistochemistry Image:



Human Lung: Formalin-Fixed, Paraffin-Embedded (FFPE)

Western Blot Image:



Antibody (0.5 ug/ml) staining of Human Liver lysate (35 ug protein in RIPA buffer) with (B) and without (A) blocking with the immunizing peptide. Primary incubation was 1 hour. Detected by chemiluminescence

Requested From:

Japan

Laboratory Reagent For In Vitro Research Use Only

Not for resale without prior written consent from LifeSpan BioSciences, Inc.

Created on 9/23/2014

© 2014 LifeSpan BioSciences