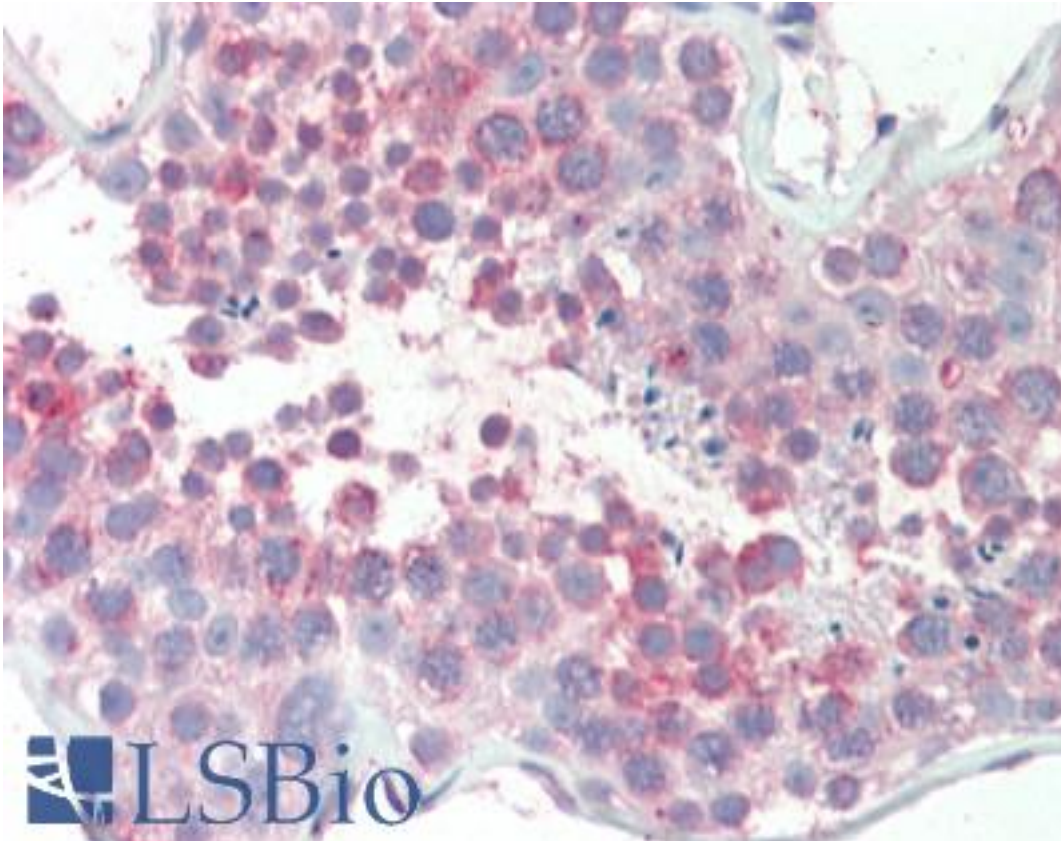


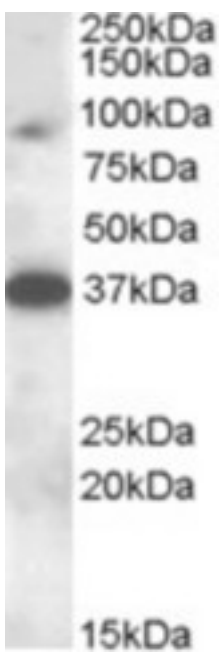
MARCH10 Goat anti-Human Polyclonal (Internal) Antibody - LS-B10294 - LSBio	
CatalogID:	LS-B10294
Validation:	This antibody replaces catalog number LS-C112715. It has been validated for use in the following assays: IHC-P.
Target:	Membrane-associated ring finger (C3HC4) 10, E3 ubiquitin protein ligase (MARCH10)
Synonyms:	MARCH10 Antibody, MARCH-X Antibody, Rnf190 Antibody, RING finger protein 190 Antibody
Host	MARCH10 antibody was produced in Goat
Clonality:	Polyclonal
Immunogen Species:	MARCH10 antibody was raised against Human
Antigen Type:	Synthetic peptide
Immunogen:	MARCH10 antibody was raised against synthetic peptide C-SRNYQPRTTEE from an internal region of human MARCH10 / RNF190 (NP_001094345.1; NP_689811.2). Percent identity by BLAST analysis: Human, Gorilla, Monkey (100%); Gibbon, Mouse, Rat, Bovine, Dog, Horse, Pig (91%); Marmoset, Rabbit (82%).
Specificity:	Human MARCH10 / RNF190. This antibody is expected to recognise both reported isoforms (NP_001094345.1; NP_689811.2), which are identical.
Epitope:	Internal
Reactivity:	Human, Gorilla, Monkey, Rat
Purification:	Immunoaffinity purified
Presentation:	Tris-buffered saline, pH 7.3, 0.5% BSA, 0.02% sodium azide
Recommended Storage:	Store at -20°C. Minimize freezing and thawing.
Usage Summary:	Peptide ELISA: antibody detection limit dilution 1:8000. Western blot: Approx. 90 kDa band observed in Rat Testis lysates (calculated MW of 90.5 kDa according to Human NP_689811.2 and of 87.9 kDa according to Mouse NP_766156.2). Recommended concentration: 0.3-1 ug/ml. An additional band of unknown identity was also consistently observed at 37 kDa. This band was successfully blocked by incubation with the immunising peptide.
Uses:	IHC - Paraffin (5 µg/ml), Western blot (0.3 - 1 µg/ml), ELISA (1:8000) (Optimal dilution to be determined by the researcher)
Size:	50 µg
Concentration:	0.5 mg/ml

Immunohistochemistry Image:



Human Testis: Formalin-Fixed, Paraffin-Embedded (FFPE)

Western Blot Image:



MARCH10 antibody (0.3 ug/ml) staining of Rat Testis lysate (35 ug protein/ml in RIPA buffer). Primary incubation was 1 hour. Detected by chemiluminescence.

Requested From:	Japan
Laboratory Reagent For In Vitro Research Use Only	
Not for resale without prior written consent from LifeSpan BioSciences, Inc.	
Created on 9/23/2014	
© 2014 LifeSpan BioSciences	