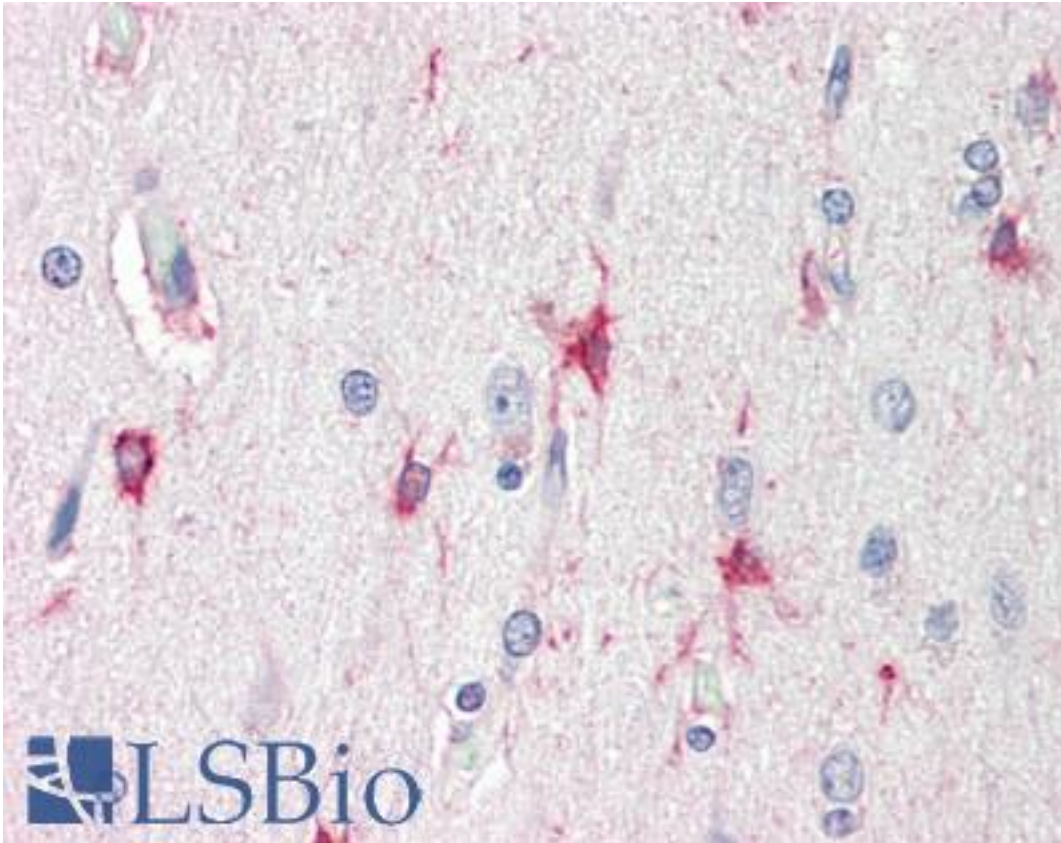


BAG3 / BAG-3 Goat anti-Human Polyclonal (aa537-548) Antibody - LS-B10292 - LSBio

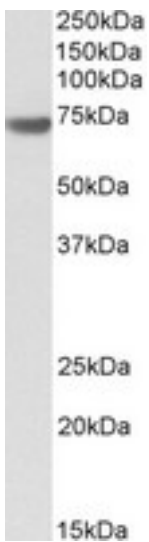
| | |
|-----------------------------|--|
| CatalogID: | LS-B10292 |
| Validation: | This antibody replaces catalog number LS-C204974. It has been validated for use in the following assays: IHC-P. |
| Target: | BCL2-associated athanogene 3 (BAG3) |
| Synonyms: | BAG3 Antibody, Bcl-2-associated athanogene 3 Antibody, Bcl-2-binding protein Bis Antibody, BCL2-binding athanogene 3 Antibody, BIS Antibody, BAG-3 Antibody, CAIR-1 Antibody, Docking protein cair1 Antibody, BCL2-associated athanogene 3 Antibody, Docking protein CAIR-1 Antibody |
| Host | BAG3 antibody was produced in Goat |
| Clonality: | Polyclonal |
| Immunogen Species: | BAG3 / BAG-3 antibody was raised against Human |
| Antigen Type: | Synthetic peptide |
| Immunogen: | BAG3 / BAG-3 antibody was raised against synthetic peptide C-KNAGNAEDPHTE from an internal region of human BAG3 / BAG-3 (NP_004272.2). Percent identity by BLAST analysis: Human, Chimpanzee, Gorilla (100%); Gibbon, Monkey (92%). |
| Specificity: | Human BAG3 / BAG-3 |
| Epitope: | aa537-548 |
| Reactivity: | Human, Chimpanzee |
| Purification: | Immunoaffinity purified |
| Presentation: | Tris saline, pH 7.3, 0.5% BSA, 0.02% sodium azide |
| Recommended Storage: | Store at -20°C. Minimize freezing and thawing. |
| Usage Summary: | Peptide ELISA: antibody detection limit dilution 1:16000. Western blot: Approx 70kD band observed in Human Pancreas lysates (calculated MW of 61.6kD according to NP_004272.2). Recommended concentration: 0.1-0.3 ug/ml. |
| Uses: | IHC - Paraffin (5 µg/ml), Western blot (0.1 - 0.3 µg/ml), ELISA (1:16000) (Optimal dilution to be determined by the researcher) |
| Size: | 50 µg |
| Concentration: | 0.5 mg/ml |

Immunohistochemistry Image:



Human Brain, Cortex: Formalin-Fixed, Paraffin-Embedded (FFPE)

Western Blot Image:



BAG3 antibody (0.1 ug/ml) staining of Human Pancreas lysate (35 ug protein in RIPA buffer). Primary incubation was 1 hour. Detected by chemiluminescence.

Requested From:

Japan

Laboratory Reagent For In Vitro Research Use Only

Not for resale without prior written consent from LifeSpan BioSciences, Inc.

Created on 9/23/2014

© 2014 LifeSpan BioSciences