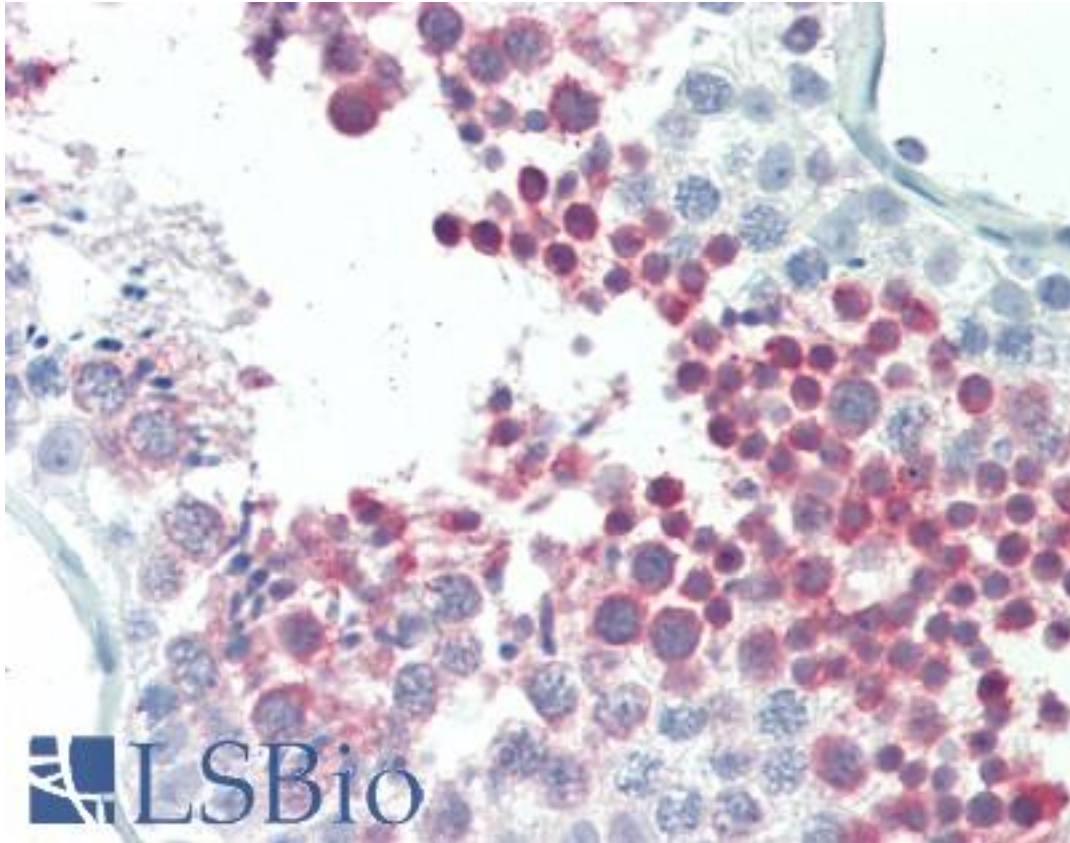


MEPCE Goat anti-Human Polyclonal (Internal) Antibody - LS-B10291 - LSBio	
CatalogID:	LS-B10291
Validation:	This antibody replaces catalog number LS-C55105. It has been validated for use in the following assays: IHC-P.
Target:	methylphosphate capping enzyme (MEPCE)
Synonyms:	MEPCE Antibody, BCDIN3 Antibody, Bin3 homolog Antibody, Methylphosphate capping enzyme Antibody
Host	MEPCE antibody was produced in Goat
Clonality:	Polyclonal
Immunogen Species:	MEPCE antibody was raised against Human
Antigen Type:	Synthetic peptide
Immunogen:	MEPCE antibody was raised against synthetic peptide KQQRKFQYGNLYCK from an internal region of human MEPCE (NP_062552.2). Percent identity by BLAST analysis: Human, Gorilla, Gibbon, Monkey, Marmoset, Elephant, Bat (100%); Mouse, Rat, Hamster, Panda, Dog, Horse, Pig, Opossum (92%).
Specificity:	Human MEPCE.
Epitope:	Internal
Reactivity:	Human, Gorilla, Gibbon, Monkey, Rat, Bat
Purification:	Immunoaffinity purified
Presentation:	Tris-buffered saline, pH 7.3, 0.5% BSA, 0.02% sodium azide
Recommended Storage:	Store at -20°C. Minimize freezing and thawing.
Uses:	IHC - Paraffin (5 µg/ml), Western blot (1:2000) & (1 - 3 µg/ml), ELISA (1:2000) (Optimal dilution to be determined by the researcher)
Size:	50 µg
Concentration:	0.5 mg/ml

Immunohistochemistry Image:



Human Testis: Formalin-Fixed, Paraffin-Embedded (FFPE)

Western Blot Image:



Antibody (1 ug/ml) staining of Rat Testis lysate (35 ug protein in RIPA buffer). Primary incubation was 1 hour. Detected by chemiluminescence.

Requested From:

Japan

Laboratory Reagent For In Vitro Research Use Only

Not for resale without prior written consent from LifeSpan BioSciences, Inc.

Created on 9/23/2014

© 2014 LifeSpan BioSciences