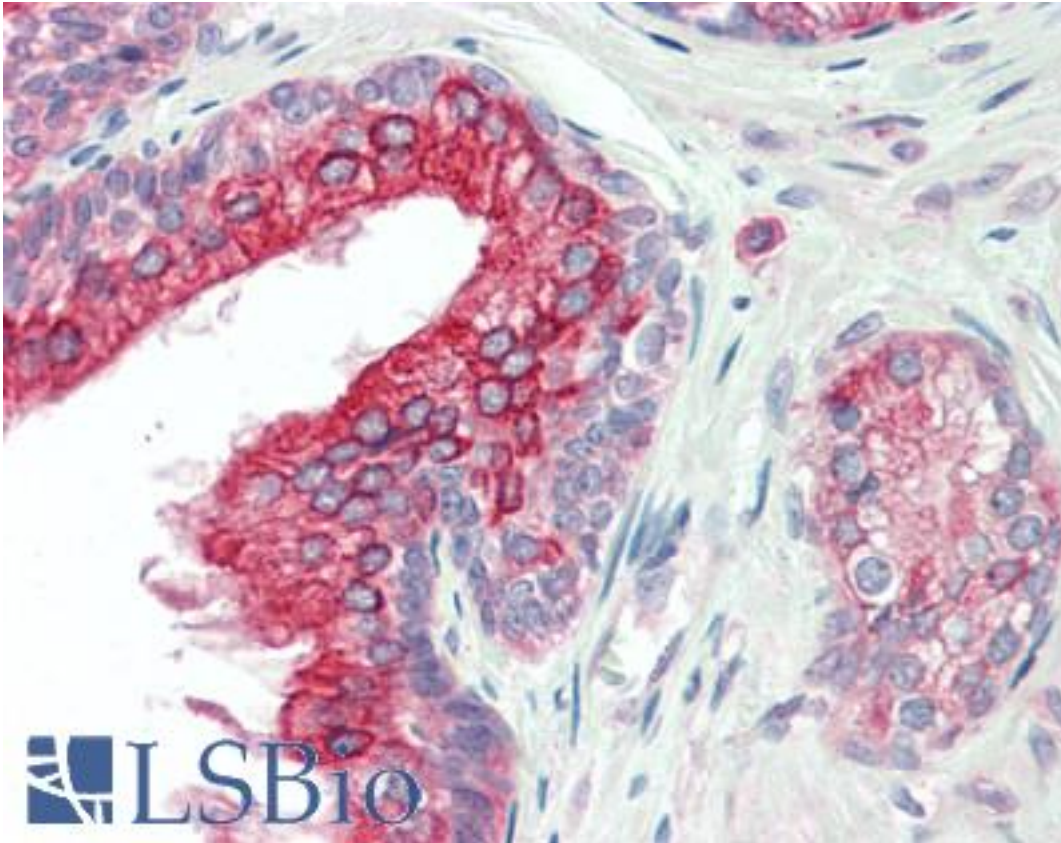


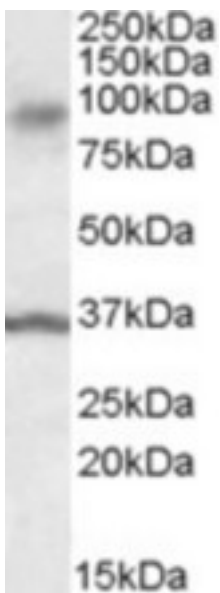
ANKK1 Goat anti-Human Polyclonal (Internal) Antibody - LS-B10288 - LSBio	
<b>CatalogID:</b>	LS-B10288
<b>Validation:</b>	This antibody replaces catalog number LS-C112739. It has been validated for use in the following assays: IHC-P.
<b>Target:</b>	ankyrin repeat and kinase domain containing 1 (ANKK1)
<b>Synonyms:</b>	ANKK1 Antibody, PKK2 Antibody, Protein kinase PKK2 Antibody, Sugen kinase 288 Antibody, SgK288 Antibody, X-kinase Antibody
<b>Family / Subfamily:</b>	Protein Kinase / RIP
<b>Host</b>	ANKK1 antibody was produced in Goat
<b>Clonality:</b>	Polyclonal
<b>Immunogen Species:</b>	ANKK1 antibody was raised against Human
<b>Antigen Type:</b>	Synthetic peptide
<b>Immunogen:</b>	ANKK1 antibody was raised against synthetic peptide C-SRQADPNLHEAEGKT from an internal region of human ANKK1 (NP_848605.1). Percent identity by BLAST analysis: Human, Gorilla, Horse (100%); Panda, Bat (93%); Monkey, Marmoset, Élephant, Bovine, Dog (87%); Gibbon, Mouse, Rat (80%).
<b>Specificity:</b>	Human ANKK1.
<b>Epitope:</b>	Internal
<b>Reactivity:</b>	Human, Gorilla, Horse
<b>Purification:</b>	Immunoaffinity purified
<b>Presentation:</b>	Tris-buffered saline, pH 7.3, 0.5% BSA, 0.02% sodium azide
<b>Recommended Storage:</b>	Store at -20°C. Minimize freezing and thawing.
<b>Usage Summary:</b>	Peptide ELISA: antibody detection limit dilution 1:128000. Western blot: Approx. 85kDa band observed in Human Brain (Substantia nigra and Amygdala) lysates (calculated MW of 84.6 kDa according to NP_848605.1). Recommended concentration: 0.1-0.3 µg/ml. An additional band of unknown identity was also consistently observed at 35 kDa. This band was successfully blocked by incubation with the immunising peptide.
<b>Uses:</b>	IHC - Paraffin (5 - 10 µg/ml), Western blot (0.1 - 0.3 µg/ml), ELISA (1:128000) (Optimal dilution to be determined by the researcher)
<b>Size:</b>	50 µg

**Immunohistochemistry Image:**



Human Prostate: Formalin-Fixed, Paraffin-Embedded (FFPE)

**Western Blot Image:**



ANKK1 antibody (0.1 ug/ml) staining of Human Substantia Nigra lysate (35 ug protein/ml in RIPA buffer). Primary incubation was 1 hour. Detected by chemiluminescence.

**Requested From:**

Japan

Laboratory Reagent For In Vitro Research Use Only

Not for resale without prior written consent from LifeSpan BioSciences, Inc.

Created on 9/23/2014

© 2014 LifeSpan BioSciences