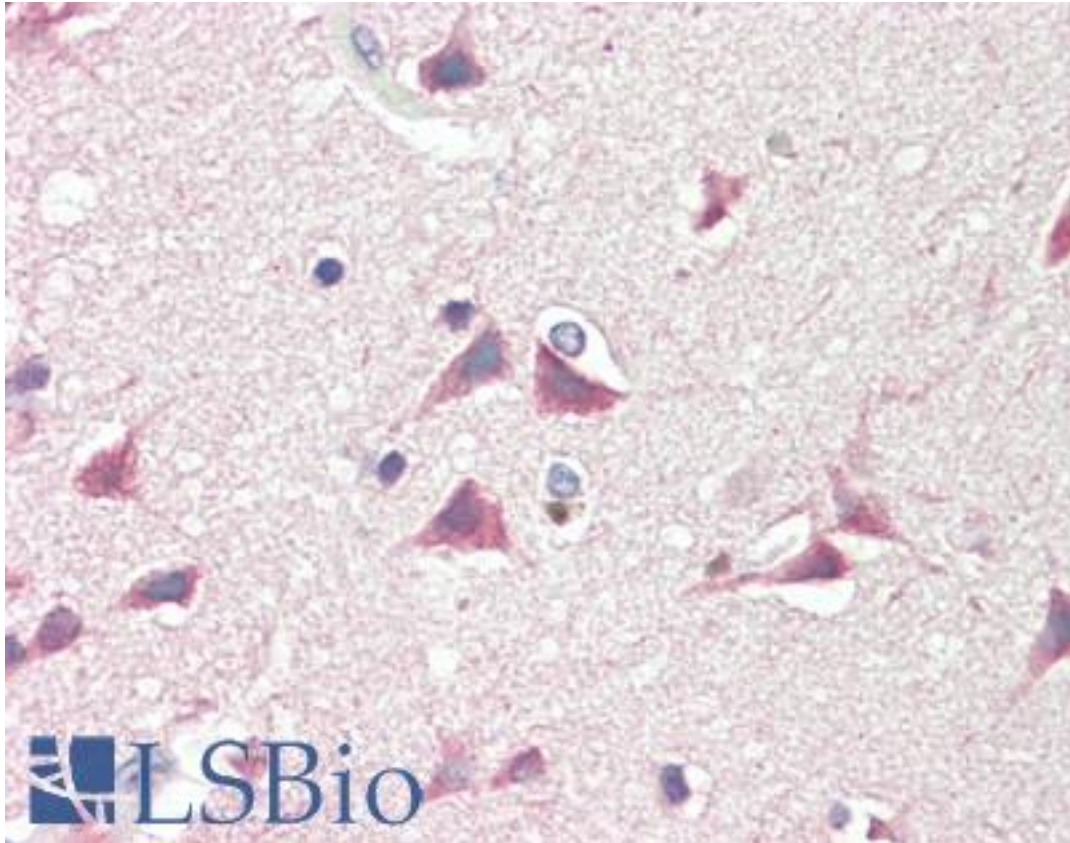


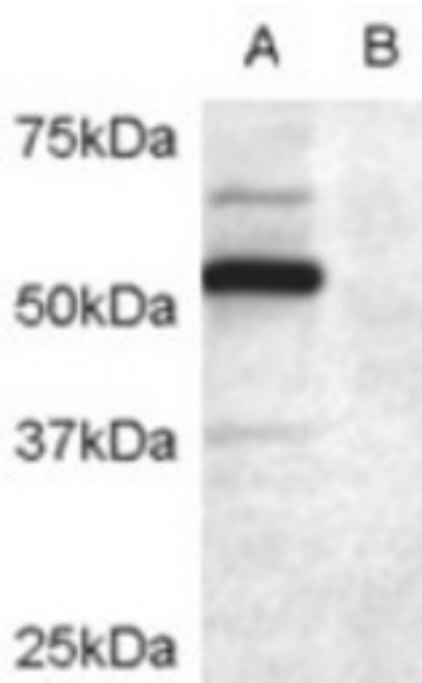
DCDC2 Goat anti-Human Polyclonal (Internal) Antibody - LS-B10286 - LSBio	
CatalogID:	LS-B10286
Validation:	This antibody replaces catalog number LS-C54707. It has been validated for use in the following assays: IHC-P.
Target:	doublecortin domain containing 2 (DCDC2)
Synonyms:	DCDC2 Antibody, DCDC2A Antibody, KIAA1154 Antibody, Ru2 Antibody, Protein RU2S Antibody, RU2S Antibody
Host	DCDC2 antibody was produced in Goat
Clonality:	Polyclonal
Immunogen Species:	DCDC2 antibody was raised against Human
Antigen Type:	Synthetic peptide
Immunogen:	DCDC2 antibody was raised against synthetic peptide C-DGEEKANKDAEQKED from an internal region of human DCDC2 (NP_057440.2). Percent identity by BLAST analysis: Human, Gorilla, Gibbon, Monkey, Dog (100%); Marmoset, Panda, Horse (93%); Pig (86%).
Specificity:	Human DCDC2.
Epitope:	Internal
Reactivity:	Human, Gorilla, Gibbon, Dog
Purification:	Immunoaffinity purified
Presentation:	Tris-buffered saline, pH 7.3, 0.5% BSA, 0.02% sodium azide
Recommended Storage:	Store at -20°C. Minimize freezing and thawing.
Uses:	IHC - Paraffin (5 µg/ml), Western blot (1:4000) & (0.1 - 0.3 µg/ml), ELISA (1:4000) (Optimal dilution to be determined by the researcher)
Size:	50 µg
Concentration:	0.5 mg/ml

Immunohistochemistry Image:



Human Brain, Cortex: Formalin-Fixed, Paraffin-Embedded (FFPE)

Western Blot Image:



Antibody (0.2 ug/ml) staining of COS7 cell lysate transfected with full length recombinant human DCDC2 (A) and untransfected control COS7 cells (B). Primary incubation was 1 hour. Detected by chemiluminescence.

Requested From:

Japan

Laboratory Reagent For In Vitro Research Use Only

Not for resale without prior written consent from LifeSpan BioSciences, Inc.

Created on 9/23/2014

© 2014 LifeSpan BioSciences