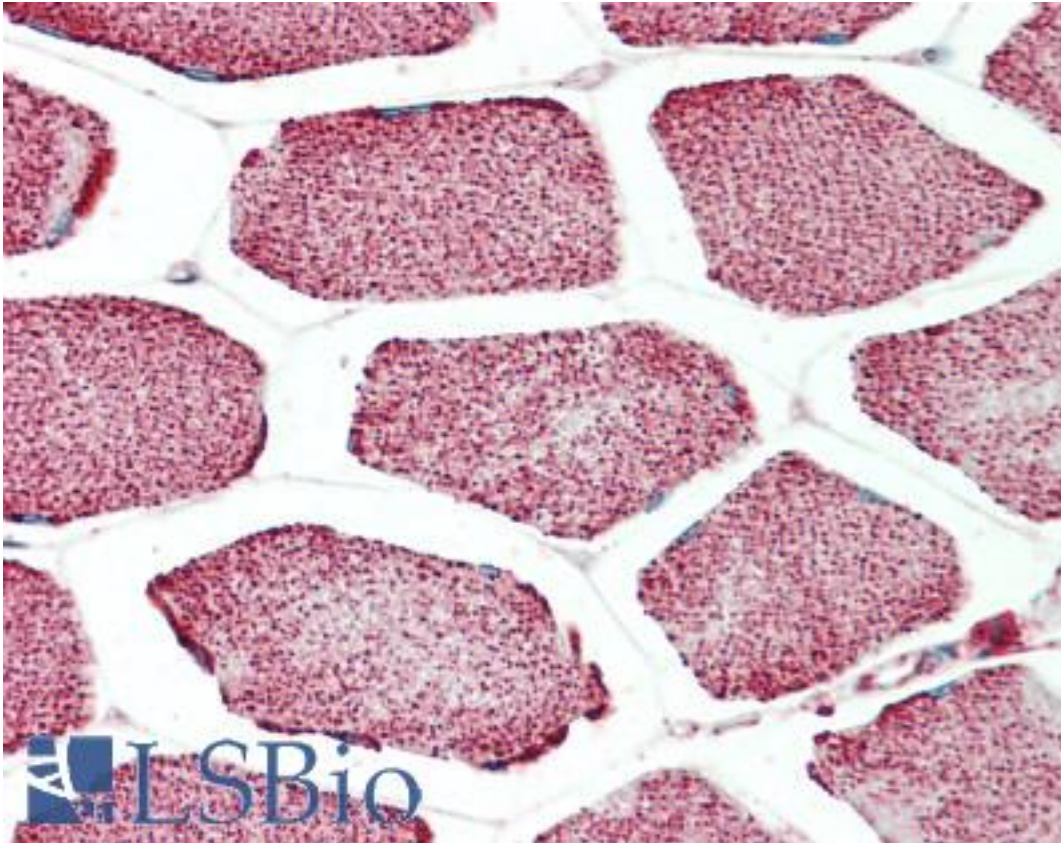


APOL4 / Apolipoprotein L 4 Goat anti-Human Polyclonal (C-Terminus) Antibody - LS-B10284 - LSBio

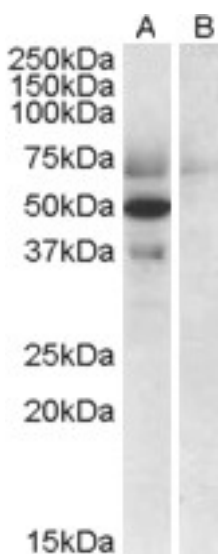
CatalogID:	LS-B10284
Validation:	This antibody replaces catalog number LS-C87329. It has been validated for use in the following assays: IHC-P.
Target:	Apolipoprotein L, 4 (APOL4)
Synonyms:	APOL4 Antibody, APOL-IV Antibody, Apolipoprotein L, 4 Antibody, Apolipoprotein L-IV Antibody, Apolipoprotein L4 Antibody, APOLIV Antibody
Host	APOL4 antibody was produced in Goat
Clonality:	Polyclonal
Immunogen Species:	APOL4 / Apolipoprotein L 4 antibody was raised against Human
Antigen Type:	Synthetic peptide
Immunogen:	APOL4 / Apolipoprotein L 4 antibody was raised against synthetic peptide C-ENLNELTHIHQSLK from the C-terminus of human APOL4 / Apolipoprotein L 4 (NP_085146.2; NP_663693.1). Percent identity by BLAST analysis: Human, Gorilla (100%); Monkey (86%).
Specificity:	Human APOL4 / Apolipoprotein L 4. This antibody is expected to recognize both reported isoforms (NP_085146.2 and NP_663693.1).
Epitope:	C-Terminus
Reactivity:	Human, Gorilla
Purification:	Immunoaffinity purified
Presentation:	Tris-buffered saline, pH 7.3, 0.5% BSA, 0.02% sodium azide
Recommended Storage:	Store at -20°C. Minimize freezing and thawing.
Usage Summary:	Peptide ELISA: antibody detection limit dilution 1:32000. Western Blot: Approx. 37kD band observed in Human Placenta lysates (calculated MW of 38.7kD according to NP_085146.2). Recommended concentration: 0.3-1 ug/ml.
Uses:	IHC - Paraffin (5 µg/ml), Western blot (0.3 - 1 µg/ml), ELISA (1:32000) & (0.3 - 1 µg/ml) (Optimal dilution to be determined by the researcher)
Size:	50 µg
Concentration:	0.5 mg/ml

Immunohistochemistry Image:



Human Skeletal Muscle: Formalin-Fixed, Paraffin-Embedded (FFPE)

Western Blot Image:



Antibody (0.5 ug/ml) staining of Human Placenta lysate (35 ug protein in RIPA buffer) with (B) and without (A) blocking with the immunizing peptide. Primary incubation was 1 hour. Detected by chemiluminescence

Requested From:

Japan

Laboratory Reagent For In Vitro Research Use Only

Not for resale without prior written consent from LifeSpan BioSciences, Inc.

Created on 9/23/2014

© 2014 LifeSpan BioSciences