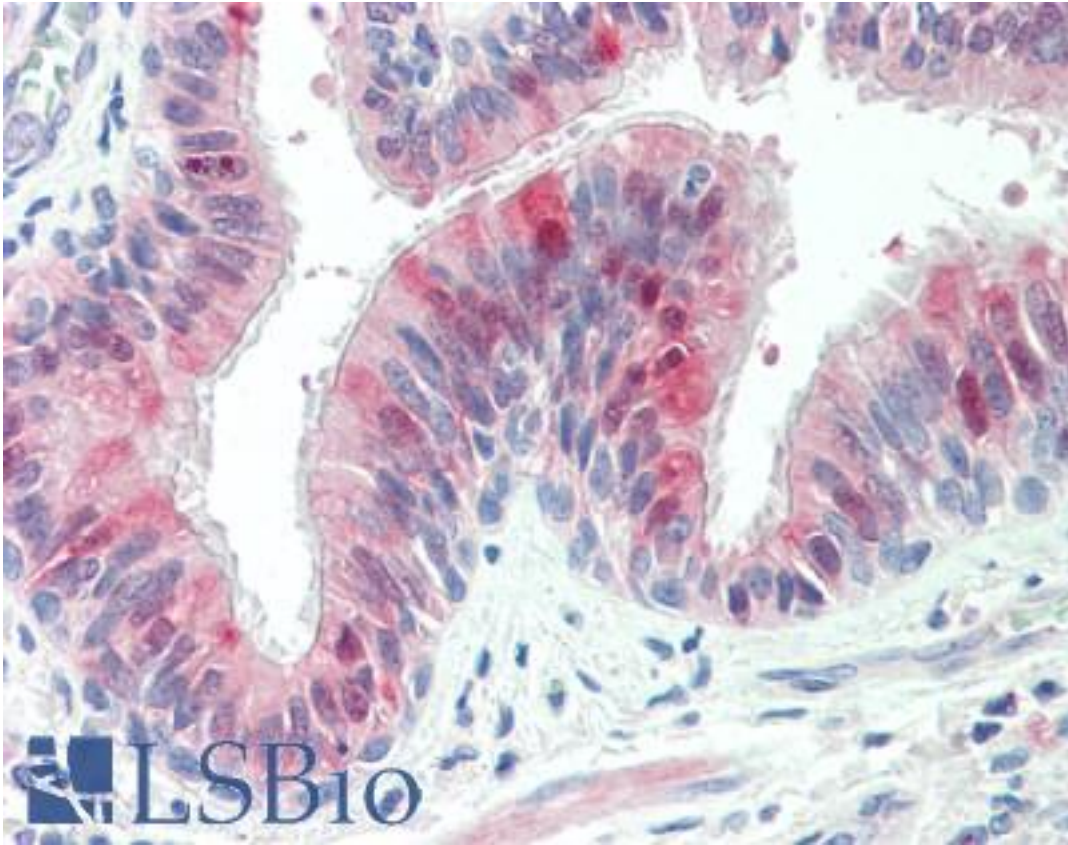


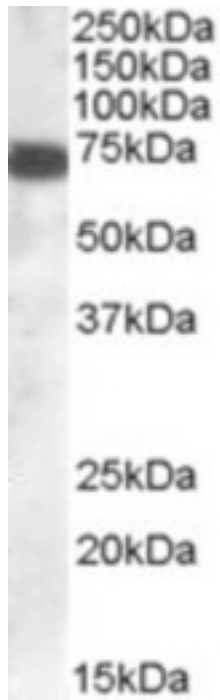
ZDHHC13 / HIP14L Goat anti-Human Polyclonal (C-Terminus) Antibody - LS-B10282 - LSBio	
<b>CatalogID:</b>	LS-B10282
<b>Validation:</b>	This antibody replaces catalog number LS-C112686. It has been validated for use in the following assays: IHC-P.
<b>Target:</b>	zinc finger, DHHC-type containing 13 (ZDHHC13)
<b>Synonyms:</b>	ZDHHC13 Antibody, DHHC-13 Antibody, HIP14-related protein Antibody, HIP14L Antibody, Palmitoyltransferase ZDHHC13 Antibody, HIP3RP Antibody
<b>Host</b>	ZDHHC13 antibody was produced in Goat
<b>Clonality:</b>	Polyclonal
<b>Immunogen Species:</b>	ZDHHC13 / HIP14L antibody was raised against Human
<b>Antigen Type:</b>	Synthetic peptide
<b>Immunogen:</b>	ZDHHC13 / HIP14L antibody was raised against synthetic peptide C-FHPAREKVLRSV from the C-terminus of human ZDHHC13 (NP_061901.2; NP_001001483.1). Percent identity by BLAST analysis: Human, Gorilla, Orangutan, Gibbon, Monkey, Marmoset (100%); Mouse, Rat, Panda, Bovine, Dog, Bat, Rabbit, Opossum (92%); Elephant, Horse, Pig, Platypus (83%).
<b>Specificity:</b>	Human ZDHHC13. This antibody is expected to recognise both reported isoforms (NP_061901.2 and NP_001001483.1).
<b>Epitope:</b>	C-Terminus
<b>Reactivity:</b>	Human, Gorilla, Orangutan, Gibbon, Monkey
<b>Purification:</b>	Immunoaffinity purified
<b>Presentation:</b>	Tris-buffered saline, pH 7.3, 0.5% BSA, 0.02% sodium azide
<b>Recommended Storage:</b>	Store at -20°C. Minimize freezing and thawing.
<b>Usage Summary:</b>	Peptide ELISA: antibody detection limit dilution 1:16000. Western blot: Approx. 70kDa band observed in Human Brain (Cerebellum) lysates (calculated MW of 70.9kDa according to NP_061901.2). Recommended concentration: 1-3 ug/ml.
<b>Uses:</b>	IHC - Paraffin (5 µg/ml), Western blot (1 - 3 µg/ml), ELISA (1:16000) (Optimal dilution to be determined by the researcher)
<b>Size:</b>	50 µg
<b>Concentration:</b>	0.5 mg/ml

**Immunohistochemistry Image:**



Human Lung, Respiratory Epithelium: Formalin-Fixed, Paraffin-Embedded (FFPE)

**Western Blot Image:**



ZDHHC13 antibody (0.1 ug/ml) staining of Human Cerebellum lysate (35 ug protein/ml in RIPA buffer). Primary incubation was 1 hour. Detected by chemiluminescence.

**Requested From:**

Japan

Laboratory Reagent For In Vitro Research Use Only

Not for resale without prior written consent from LifeSpan BioSciences, Inc.

Created on 9/23/2014

© 2014 LifeSpan BioSciences