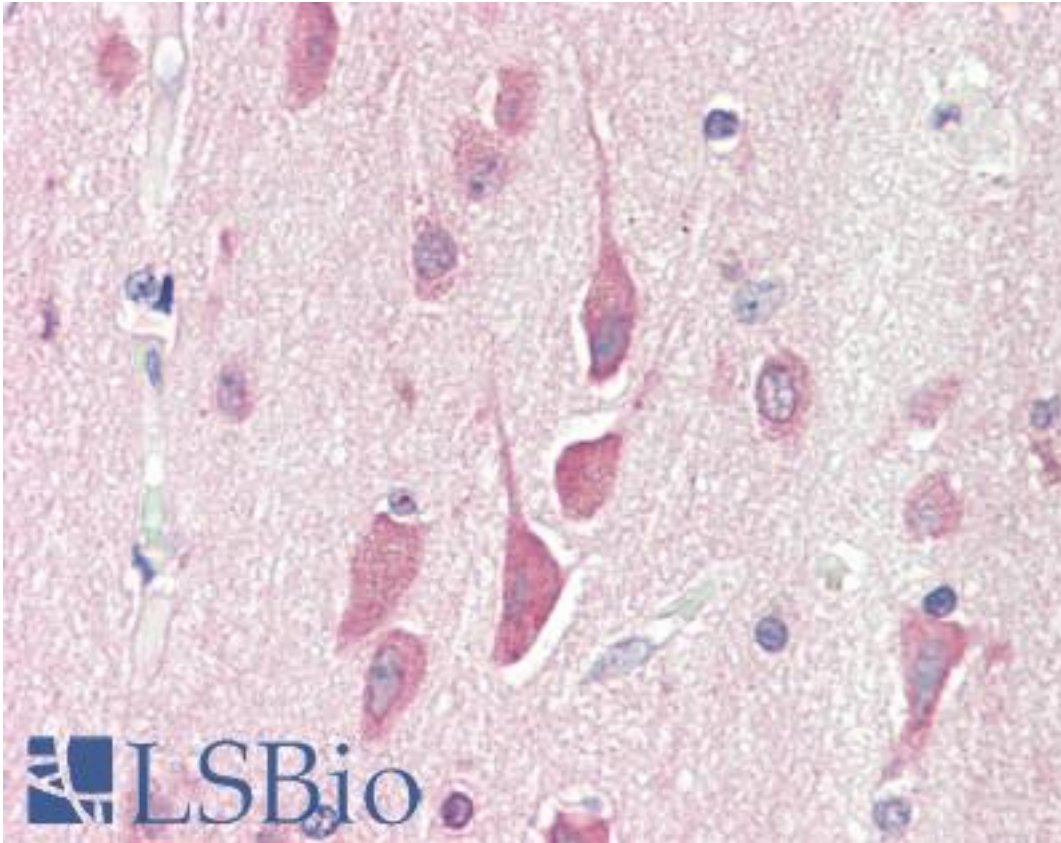


**HPS6 Goat anti-Human Polyclonal (Internal) Antibody - LS-B10281 - LSBio**

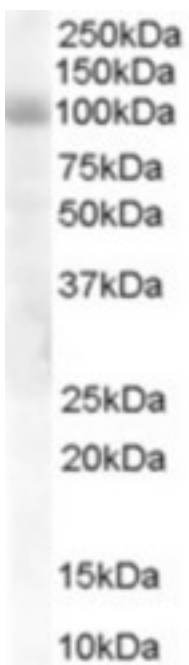
|                             |   |
|-----------------------------|---|
| <b>CatalogID:</b>           | LS-B10281   |
| <b>Validation:</b>          | This antibody replaces catalog number LS-C54979. It has been validated for use in the following assays: IHC-P.  |
| <b>Target:</b>              | Hermansky-Pudlak syndrome 6 (HPS6)  |
| <b>Synonyms:</b>            | HPS6 Antibody, Hermansky-Pudlak syndrome 6 Antibody, Ruby-eye protein homolog Antibody, RP11-302K17.1 Antibody, Ru Antibody   |
| <b>Host</b>                 | HPS6 antibody was produced in Goat  |
| <b>Clonality:</b>           | Polyclonal  |
| <b>Immunogen Species:</b>   | HPS6 antibody was raised against Human  |
| <b>Antigen Type:</b>        | Synthetic peptide   |
| <b>Immunogen:</b>           | HPS6 antibody was raised against synthetic peptide LRTELRDYRGLEC from an internal region of human HPS6 (NP_079023). Percent identity by BLAST analysis: Human, Gorilla, Gibbon, Monkey, Marmoset (100%); Bovine, Pig (92%); Hamster, Elephant, Horse (83%). |
| <b>Specificity:</b>         | Human HPS6.   |
| <b>Epitope:</b>             | Internal  |
| <b>Reactivity:</b>          | Human, Gorilla, Gibbon, Monkey  |
| <b>Purification:</b>        | Immunoaffinity purified   |
| <b>Presentation:</b>        | Tris-buffered saline, pH 7.3, 0.5% BSA, 0.02% sodium azide  |
| <b>Recommended Storage:</b> | Store at -20°C. Minimize freezing and thawing.  |
| <b>Uses:</b>                | IHC - Paraffin (5 µg/ml), Western blot (1:32000) & (1 - 3 µg/ml), ELISA (1:32000) (Optimal dilution to be determined by the researcher)   |
| <b>Size:</b>                | 50 µg   |
| <b>Concentration:</b>       | 0.5 mg/ml   |

**Immunohistochemistry Image:**



Human Brain, Cortex: Formalin-Fixed, Paraffin-Embedded (FFPE)

**Western Blot Image:**



Antibody staining (1 ug/ml) of Human Lung lysate (RIPA buffer, 30 ug total protein per lane). Primary incubated for 1 hour. Detected by Western blot of chemiluminescence.

|  |       |
|--|-------|
| <b>Requested From:</b>   | Japan |
| Laboratory Reagent For In Vitro Research Use Only                            |       |
| Not for resale without prior written consent from LifeSpan BioSciences, Inc. |       |
| Created on 9/23/2014   |       |
| © 2014 LifeSpan BioSciences  |       |