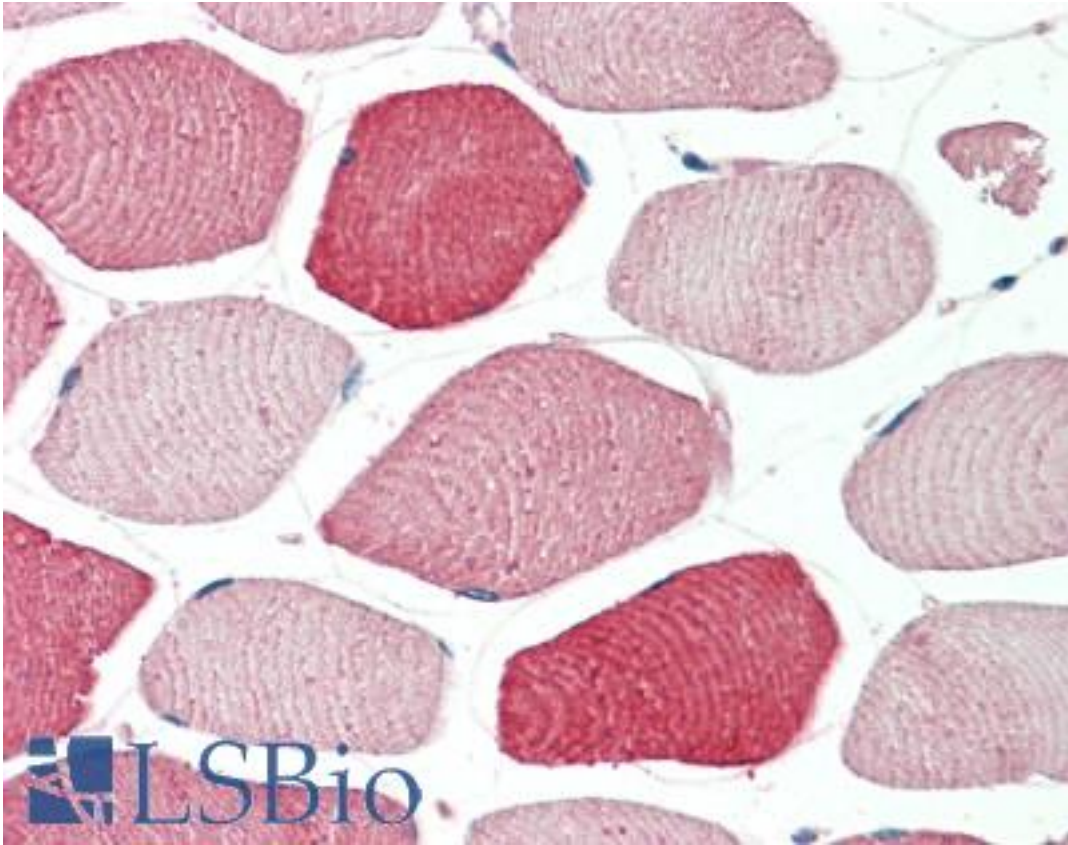


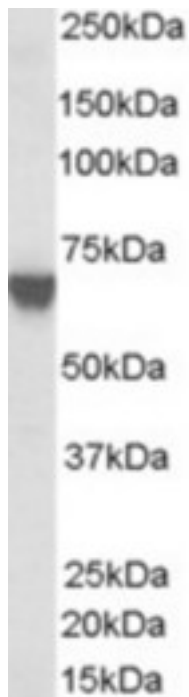
TOM1L2 Goat anti-Human Polyclonal (C-Terminus) Antibody - LS-B10280 - LSBio	
<b>CatalogID:</b>	LS-B10280
<b>Validation:</b>	This antibody replaces catalog number LS-C55603. It has been validated for use in the following assays: IHC-P.
<b>Target:</b>	target of myb1-like 2 (chicken) (TOM1L2)
<b>Synonyms:</b>	TOM1L2 Antibody, Target of Myb-like protein 2 Antibody, TOM1-like protein 2 Antibody
<b>Host</b>	TOM1L2 antibody was produced in Goat
<b>Clonality:</b>	Polyclonal
<b>Immunogen Species:</b>	TOM1L2 antibody was raised against Human
<b>Antigen Type:</b>	Synthetic peptide
<b>Immunogen:</b>	TOM1L2 antibody was raised against synthetic peptide C-RKKPERSEDALFAL from the C-terminus of human TOM1L2 (NP_001028723.1; NP_001076437.1). Percent identity by BLAST analysis: Human, Gorilla, Gibbon, Monkey, Marmoset, Rat, Hamster, Elephant, Panda, Bovine, Dog, Horse, Opossum (100%); Mouse, Turkey, Chicken, Platypus (93%).
<b>Specificity:</b>	Human TOM1L2. This antibody is expected to recognise both reported isoforms.
<b>Epitope:</b>	C-Terminus
<b>Reactivity:</b>	Human, Gorilla, Gibbon, Monkey, Rat, Bovine, Dog, Hamster, Horse
<b>Purification:</b>	Immunoaffinity purified
<b>Presentation:</b>	Tris-buffered saline, pH 7.3, 0.5% BSA, 0.02% sodium azide
<b>Recommended Storage:</b>	Store at -20°C. Minimize freezing and thawing.
<b>Uses:</b>	IHC - Paraffin (5 µg/ml), Western blot (1:64000) & (0.1 - 1 µg/ml), ELISA (1:64000) (Optimal dilution to be determined by the researcher)
<b>Size:</b>	50 µg
<b>Concentration:</b>	0.5 mg/ml

**Immunohistochemistry Image:**



Human Skeletal Muscle: Formalin-Fixed, Paraffin-Embedded (FFPE)

**Western Blot Image:**



Antibody (0.03 ug/ml) staining of A431 lysate (35 ug protein in RIPA buffer). Primary incubation was 1 hour. Detected by chemiluminescence.

**Requested From:**

Japan

Laboratory Reagent For In Vitro Research Use Only

Not for resale without prior written consent from LifeSpan BioSciences, Inc.

Created on 9/23/2014

© 2014 LifeSpan BioSciences