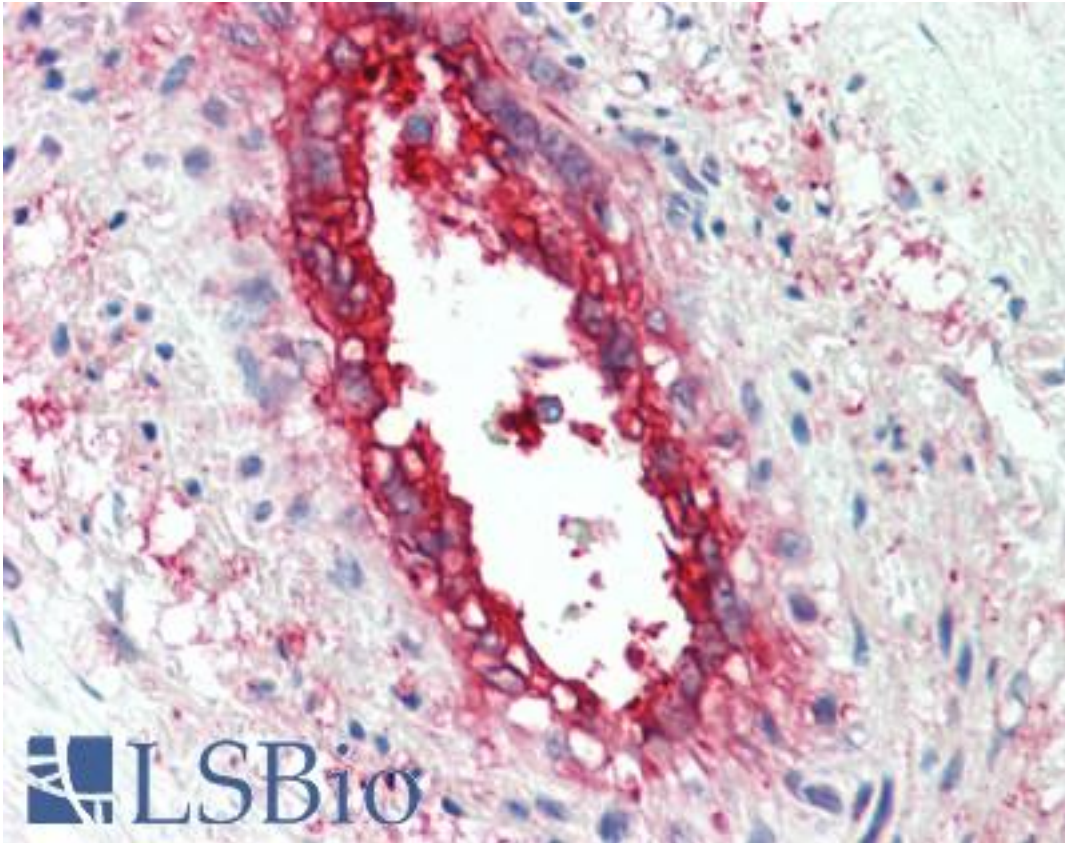


EHD2 Goat anti-Human Polyclonal (C-Terminus) Antibody - LS-B10279 - LSBio	
CatalogID:	LS-B10279
Validation:	This antibody replaces catalog number LS-C54759. It has been validated for use in the following assays: IHC-P.
Target:	EH-domain containing 2 (EHD2)
Synonyms:	EHD2 Antibody, EH domain containing 2 Antibody, PAST homolog 2 Antibody, EH domain-containing protein 2 Antibody, EH-domain containing 2 Antibody, PAST2 Antibody
Host	EHD2 antibody was produced in Goat
Clonality:	Polyclonal
Immunogen Species:	EHD2 antibody was raised against Human
Antigen Type:	Synthetic peptide
Immunogen:	EHD2 antibody was raised against synthetic peptide C-RLVPPSKRRHKGSA from the C-terminus of human EHD2 (NP_055416.2). Percent identity by BLAST analysis: Human, Gorilla, Gibbon, Monkey, Marmoset, Elephant, Panda, Bovine (100%); Mouse, Rat (93%); Pufferfish, Zebrafish (86%).
Specificity:	Human EHD2. This antibody is expected to recognise EHD1 protein as well as EHD2.
Epitope:	C-Terminus
Reactivity:	Human, Gorilla, Gibbon, Monkey, Bovine
Purification:	Immunoaffinity purified
Presentation:	Tris-buffered saline, pH 7.3, 0.5% BSA, 0.02% sodium azide
Recommended Storage:	Store at -20°C. Minimize freezing and thawing.
Uses:	IHC - Paraffin (5 µg/ml), Western blot (1:32000) & (0.00 - 0.01 µg/ml), ELISA (1:32000) (Optimal dilution to be determined by the researcher)
Size:	50 µg
Concentration:	0.5 mg/ml

Immunohistochemistry Image:



Human Vessel: Formalin-Fixed, Paraffin-Embedded (FFPE)

Western Blot Image:



Antibody staining (0.003 ug/ml) of human heart lysate (RIPA buffer, 35 ug total protein per lane). Primary incubated for 1 hour. Detected by Western blot of chemiluminescence.

Requested From:

Japan

Laboratory Reagent For In Vitro Research Use Only

Not for resale without prior written consent from LifeSpan BioSciences, Inc.

Created on 9/23/2014

© 2014 LifeSpan BioSciences