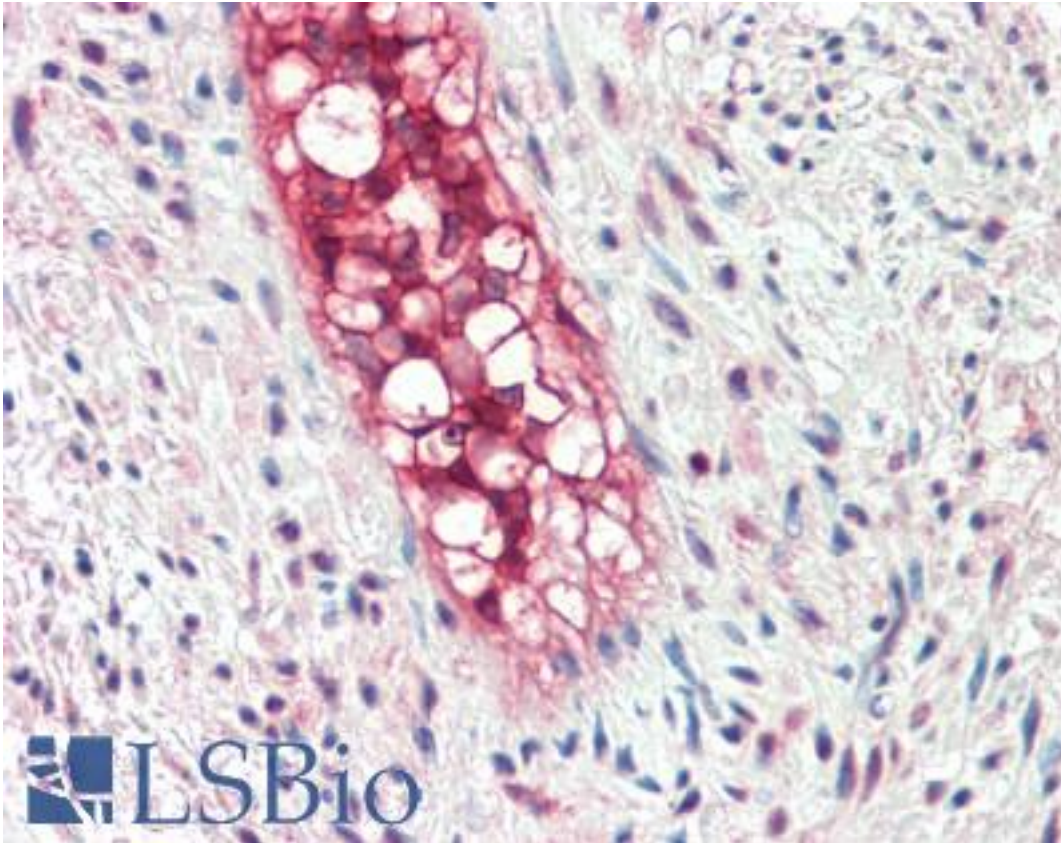


ECSCR Goat anti-Human Polyclonal (C-Terminus) Antibody - LS-B10278 - LSBio

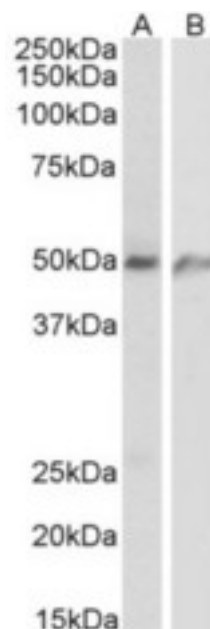
CatalogID:	LS-B10278
Validation:	This antibody replaces catalog number LS-C205006. It has been validated for use in the following assays: IHC-P.
Target:	endothelial cell surface expressed chemotaxis and apoptosis regulator (ECSCR)
Synonyms:	ECSCR Antibody, ARIA Antibody, ECSM2 Antibody
Host	ECSCR antibody was produced in Goat
Clonality:	Polyclonal
Immunogen Species:	ECSCR antibody was raised against Human
Antigen Type:	Synthetic peptide
Immunogen:	ECSCR antibody was raised against synthetic peptide C-NNGKQSLSAEKVL from the C-terminus of human ECSCR (NP_001071161.1). Percent identity by BLAST analysis: Human, Chimpanzee (100%); Monkey (85%); Mouse (69%).
Specificity:	Human ECSCR
Epitope:	C-Terminus
Reactivity:	Human, Chimpanzee
Purification:	Immunoaffinity purified
Presentation:	Tris saline, pH 7.3, 0.5% BSA, 0.02% sodium azide
Recommended Storage:	Store at -20°C. Minimize freezing and thawing.
Usage Summary:	Peptide ELISA: antibody detection limit dilution 1:128000. Western blot: Approx 50kD band observed in Human Lung and Human Umbilical Cord lysates (calculated MW of 21.3kD according to NP_001071161.1). The observed molecular weight corresponds to earlier findings in literature with different antibodies (Ref PMID: 18556573). Recommended concentration: 1-3 ug/ml.
Uses:	IHC - Paraffin (5 µg/ml), Western blot (1 - 3 µg/ml), ELISA (1:128000) (Optimal dilution to be determined by the researcher)
Size:	50 µg
Concentration:	0.5 mg/ml

Immunohistochemistry Image:



Human Vessel: Formalin-Fixed, Paraffin-Embedded (FFPE)

Western Blot Image:



ECSCR antibody (1 ug/ml) staining of Human lung (A) and Human Umbilical cord (B) lysates (35 ug protein in RIPA buffer). Primary incubation was 1 hour.

Requested From:

Japan

Laboratory Reagent For In Vitro Research Use Only

Not for resale without prior written consent from LifeSpan BioSciences, Inc.

Created on 9/23/2014

© 2014 LifeSpan BioSciences