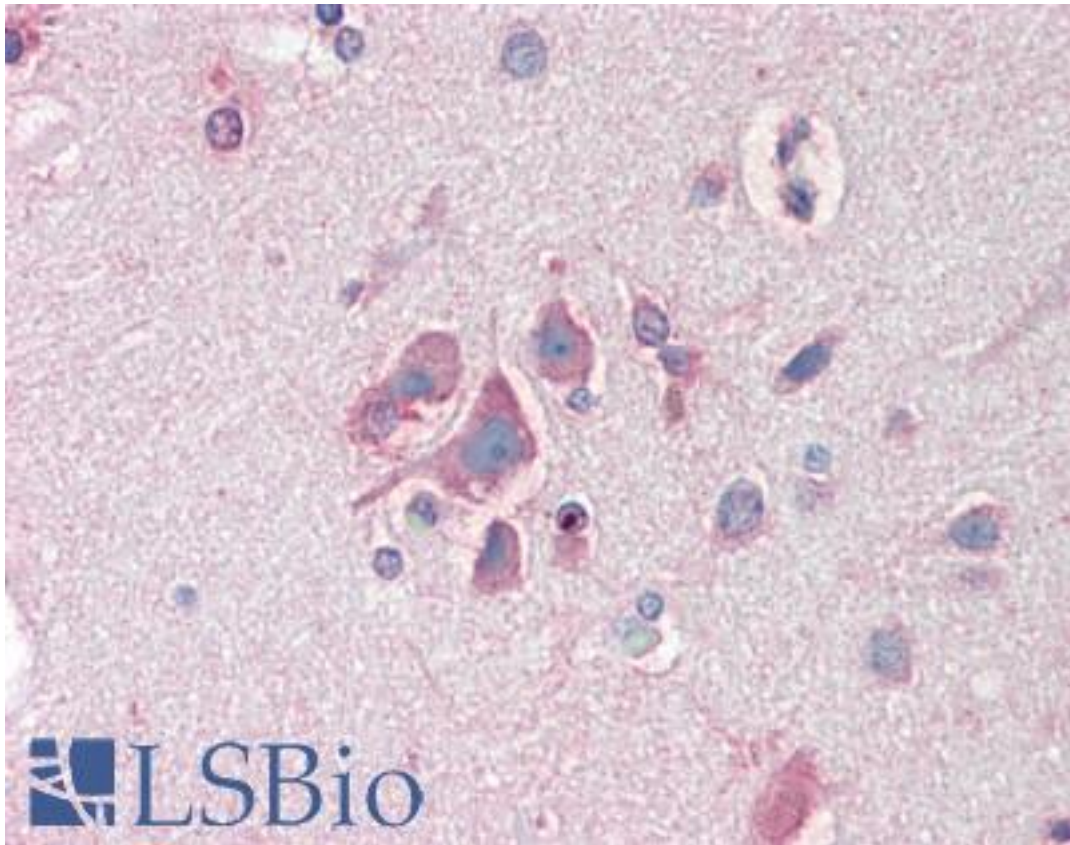


FBXL2 Goat anti-Human Polyclonal (N-Terminus) Antibody - LS-B10277 - LSBio

CatalogID:	LS-B10277
Validation:	This antibody replaces catalog number LS-C54819. It has been validated for use in the following assays: IHC-P.
Target:	F-box and leucine-rich repeat protein 2 (FBXL2)
Synonyms:	FBXL2 Antibody, F-box/LRR-repeat protein 2 Antibody, F-box protein FBL2/FBL3 Antibody, FBL3 Antibody, Fbl2 Antibody
Family / Subfamily:	F-Box
Host	FBXL2 antibody was produced in Goat
Clonality:	Polyclonal
Immunogen Species:	FBXL2 antibody was raised against Human
Antigen Type:	Synthetic peptide
Immunogen:	FBXL2 antibody was raised against synthetic peptide VFSNNDEGLINKK-C from the N-terminus of human FBXL2 (NP_036289.2). Percent identity by BLAST analysis: Human, Gorilla, Gibbon, Dog, Bat, Bovine, Horse (100%); Orangutan, Rat, Elephant, Turkey, Chicken (92%); Mouse, Xenopus, Zebrafish (85%).
Specificity:	Human FBXL2.
Epitope:	N-Terminus
Reactivity:	Human, Gorilla, Gibbon, Bat, Bovine, Dog, Horse
Purification:	Immunoaffinity purified
Presentation:	Tris-buffered saline, pH 7.3, 0.5% BSA, 0.02% sodium azide
Recommended Storage:	Store at -20°C. Minimize freezing and thawing.
Uses:	IHC - Paraffin (10 µg/ml), Western blot (1:32000) & (0.3 - 1 µg/ml), ELISA (1:32000) (Optimal dilution to be determined by the researcher)
Size:	50 µg
Concentration:	0.5 mg/ml

Immunohistochemistry Image:



Human Brain, Cortex: Formalin-Fixed, Paraffin-Embedded (FFPE)

Western Blot Image:



Antibody staining (0.3 ug/ml) of Human Brain lysates (RIPA buffer, 35 ug total protein per lane). Primary incubated for 1 hour. Detected by Western blot of chemiluminescence.

Requested From:

Japan

Laboratory Reagent For In Vitro Research Use Only

Not for resale without prior written consent from LifeSpan BioSciences, Inc.

Created on 9/23/2014

© 2014 LifeSpan BioSciences