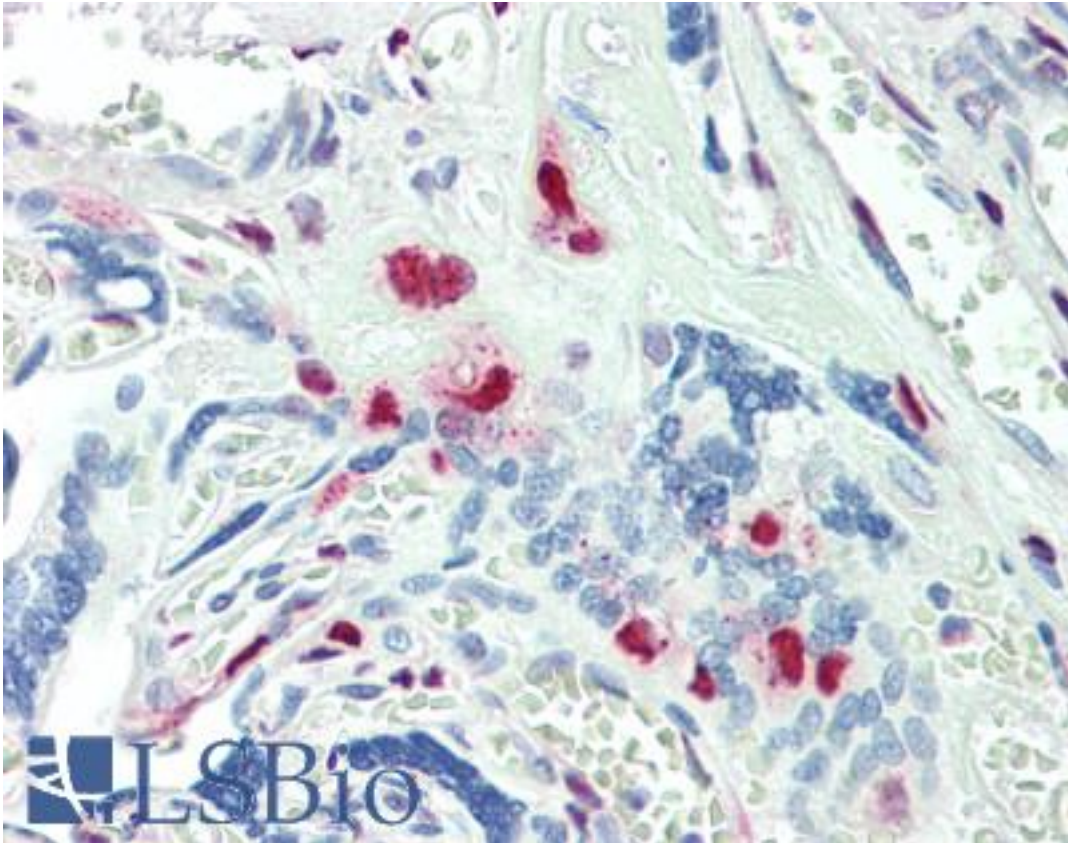


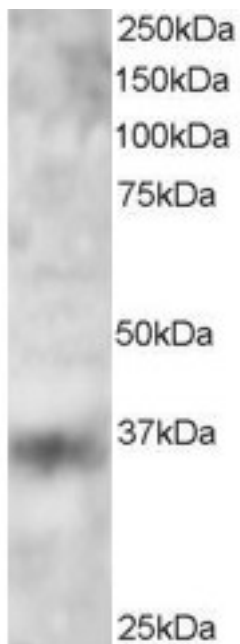
KLF16 Goat anti-Human Polyclonal (C-Terminus) Antibody - LS-B10273 - LSBio	
CatalogID:	LS-B10273
Validation:	This antibody replaces catalog number LS-C55035. It has been validated for use in the following assays: IHC-P.
Target:	Kruppel-like factor 16 (KLF16)
Synonyms:	KLF16 Antibody, BTE-binding protein 4 Antibody, DRRF Antibody, Kruppel-like factor 16 Antibody, Transcription factor BTEB4 Antibody, Transcription factor NSLP2 Antibody, BTEB4 Antibody, Krueppel-like factor 16 Antibody, NSLP2 Antibody
Host	KLF16 antibody was produced in Goat
Clonality:	Polyclonal
Immunogen Species:	KLF16 antibody was raised against Human
Antigen Type:	Synthetic peptide
Immunogen:	KLF16 antibody was raised against synthetic peptide C-PAPSPAPSPAPAGL from the C-terminus of human KLF16 (NP_114124.1). Percent identity with other species by BLAST analysis: Human (100%), Hamster (93%), Mouse (86%), Rat (86%), Bovine (86%), Spikemoss (86%).
Specificity:	Human KLF16.
Epitope:	C-Terminus
Reactivity:	Human
Purification:	Immunoaffinity purified
Presentation:	Tris-buffered saline, pH 7.3, 0.5% BSA, 0.02% sodium azide
Recommended Storage:	Store at -20°C. Minimize freezing and thawing.
Uses:	IHC - Paraffin (5 µg/ml), Western blot (2 - 4 µg/ml) (Optimal dilution to be determined by the researcher)
Size:	50 µg
Concentration:	0.5 mg/ml

Immunohistochemistry Image:



Human Placenta: Formalin-Fixed, Paraffin-Embedded (FFPE)

Western Blot Image:



Antibody staining (3 ug/ml) of 293 lysate (RIPA buffer, 30 ug total protein per lane). Primary incubated for 12 hour. Detected by Western blot of chemiluminescence.

Requested From:	Japan
Laboratory Reagent For In Vitro Research Use Only	
Not for resale without prior written consent from LifeSpan BioSciences, Inc.	
Created on 9/23/2014	
© 2014 LifeSpan BioSciences	