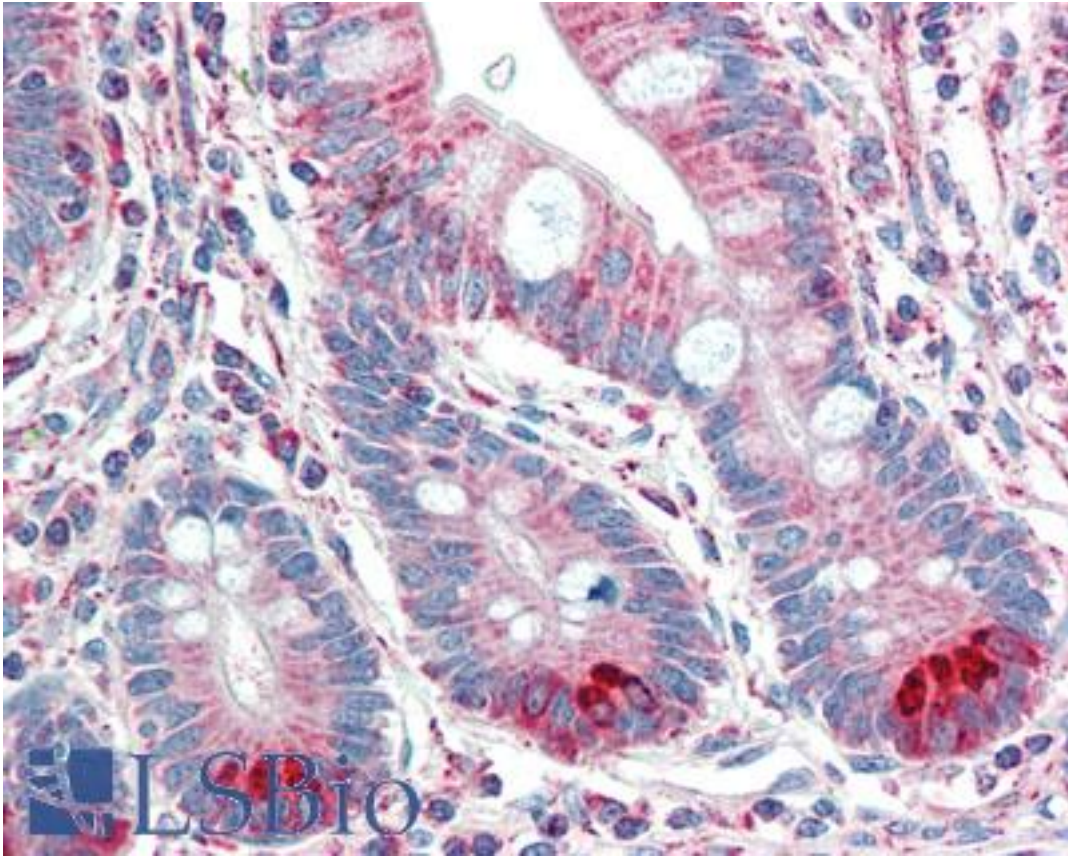


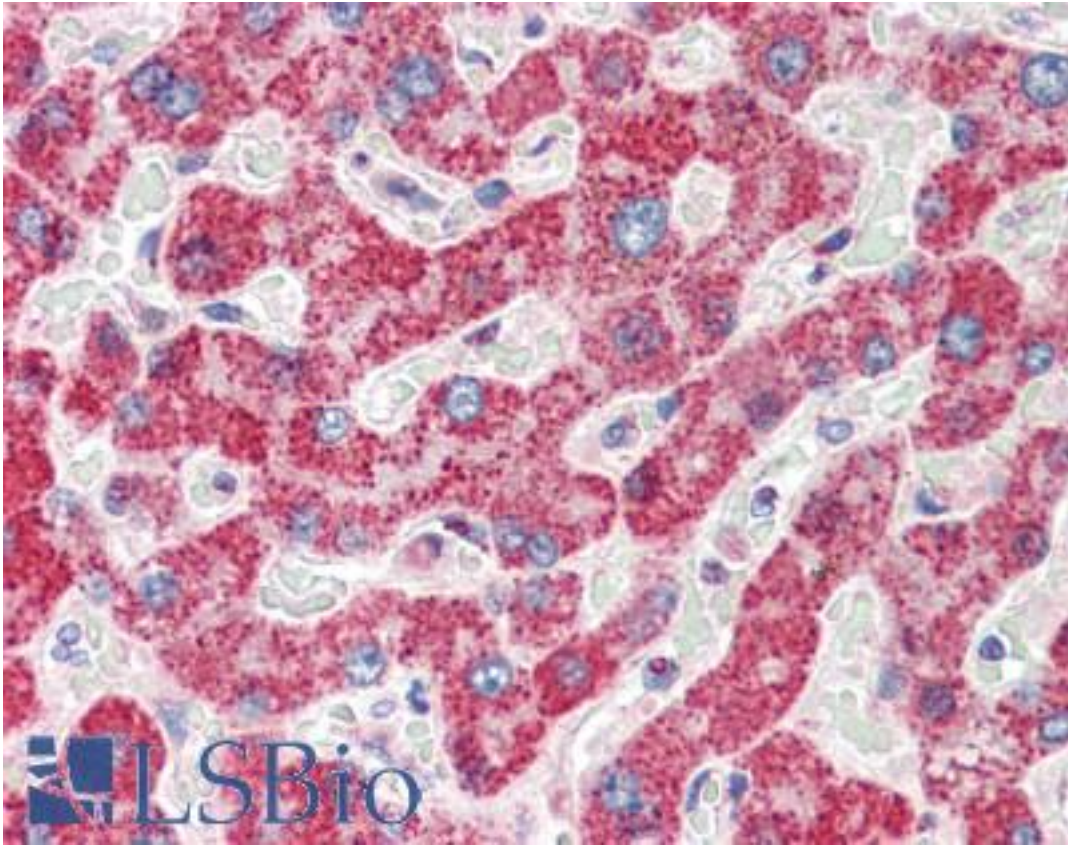
TMPRSS5 Goat anti-Human Polyclonal (C-Terminus) Antibody - LS-B10272 - LSBio	
CatalogID:	LS-B10272
Validation:	This antibody replaces catalog number LS-C55525. It has been validated for use in the following assays: IHC-P.
Target:	transmembrane protease, serine 5 (TMPRSS5)
Synonyms:	TMPRSS5 Antibody, SPINESIN Antibody
Family / Subfamily:	Protease / Serine S1
Host	TMPRSS5 antibody was produced in Goat
Clonality:	Polyclonal
Immunogen Species:	TMPRSS5 antibody was raised against Human
Antigen Type:	Synthetic peptide
Immunogen:	TMPRSS5 antibody was raised against synthetic peptide C-LDWIHDTAQDSSL from the C-terminus of human TMPRSS5 (NP_110397.2). Percent identity with other species by BLAST analysis: Human (100%), Marmoset (92%), Horse (85%).
Specificity:	Human TMPRSS5.
Epitope:	C-Terminus
Reactivity:	Human
Purification:	Immunoaffinity purified
Presentation:	Tris-buffered saline, pH 7.3, 0.5% BSA, 0.02% sodium azide
Recommended Storage:	Store at -20°C. Minimize freezing and thawing.
Uses:	IHC - Paraffin (5 µg/ml), Western blot (1:32000) & (0.5 µg/ml), ELISA (1:32000) (Optimal dilution to be determined by the researcher)
Size:	50 µg
Concentration:	0.5 mg/ml

Immunohistochemistry Image:



Human Small Intestine: Formalin-Fixed, Paraffin-Embedded (FFPE)

Immunohistochemistry Image:



Human Liver: Formalin-Fixed, Paraffin-Embedded (FFPE)

Western Blot Image:



Antibody staining (0.5 ug/ml) of Human Brain (Cerebral Cortex) lysate (RIPA buffer, 35 ug total protein per lane). Primary incubated for 1 hour. Detected by Western blot of chemiluminescence.

Requested From:

Japan

Laboratory Reagent For In Vitro Research Use Only

Not for resale without prior written consent from LifeSpan BioSciences, Inc.

Created on 9/23/2014

© 2014 LifeSpan BioSciences