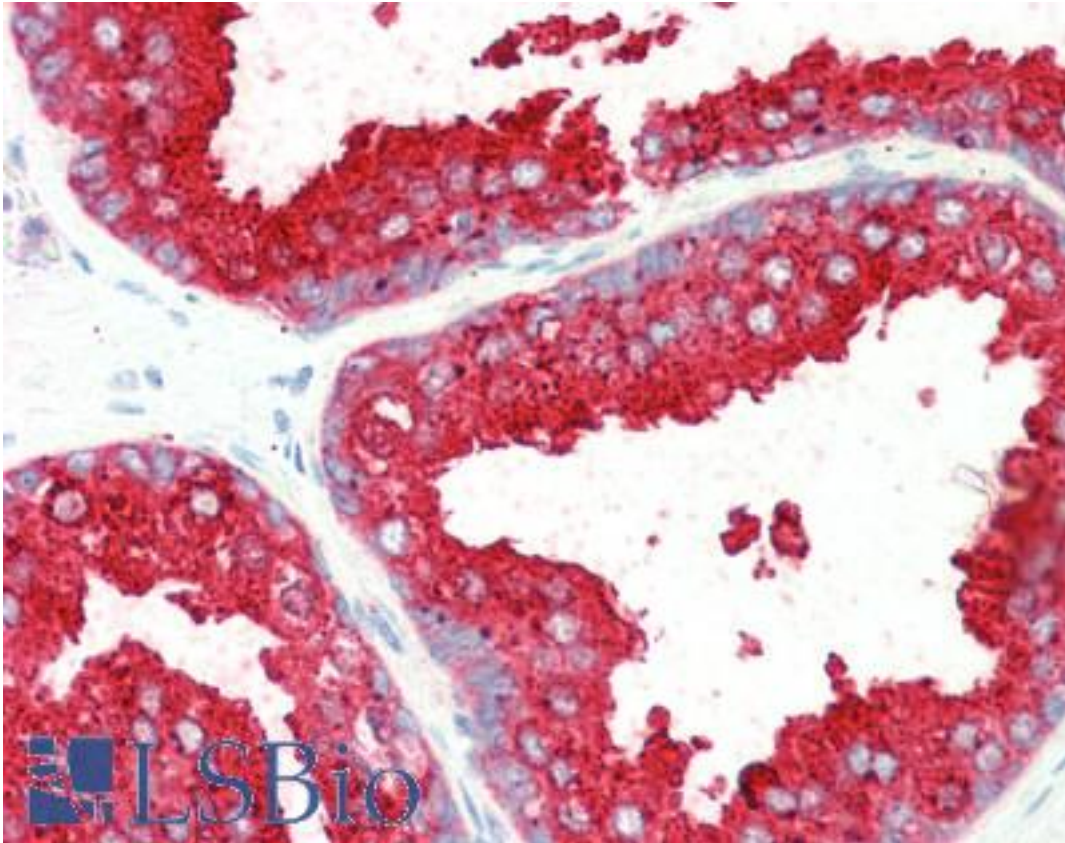


ELMO3 Goat anti-Human Polyclonal (C-Terminus) Antibody - LS-B10271 - LSBio

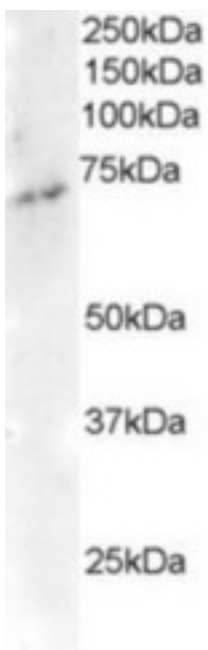
CatalogID:	LS-B10271
Validation:	This antibody replaces catalog number LS-C54769. It has been validated for use in the following assays: IHC-P.
Target:	engulfment and cell motility 3 (ELMO3)
Synonyms:	ELMO3 Antibody, Ced-12 homolog 3 Antibody, ELMO-3 Antibody, Engulfment and cell motility 3 Antibody, CED-12 Antibody, CED12 Antibody
Host	ELMO3 antibody was produced in Goat
Clonality:	Polyclonal
Immunogen Species:	ELMO3 antibody was raised against Human
Antigen Type:	Synthetic peptide
Immunogen:	ELMO3 antibody was raised against synthetic peptide TNFNFCYDCSIAEP from the C-terminus of human ELMO3 (NP_078988.2). Percent identity by BLAST analysis: Human, Gorilla, Gibbon, Monkey, Marmoset, Horse, Pig (100%); Panda (93%); Mouse, Hamster, Bat, Rabbit (86%).
Specificity:	Human ELMO3.
Epitope:	C-Terminus
Reactivity:	Human, Gorilla, Gibbon, Monkey, Horse, Pig
Purification:	Immunoaffinity purified
Presentation:	Tris-buffered saline, pH 7.3, 0.5% BSA, 0.02% sodium azide
Recommended Storage:	Store at -20°C. Minimize freezing and thawing.
Uses:	IHC - Paraffin (5 µg/ml), Western blot (1 - 3 µg/ml) (Optimal dilution to be determined by the researcher)
Size:	50 µg
Concentration:	0.5 mg/ml

Immunohistochemistry Image:



Human Prostate: Formalin-Fixed, Paraffin-Embedded (FFPE)

Western Blot Image:



Antibody staining (2 ug/ml) of Human Brain lysate (RIPA buffer, 35 ug total protein per lane). Primary incubated for 1 hour. Detected by Western blot of chemiluminescence.

Requested From:	Japan
Laboratory Reagent For In Vitro Research Use Only	
Not for resale without prior written consent from LifeSpan BioSciences, Inc.	
Created on 9/23/2014	
© 2014 LifeSpan BioSciences	