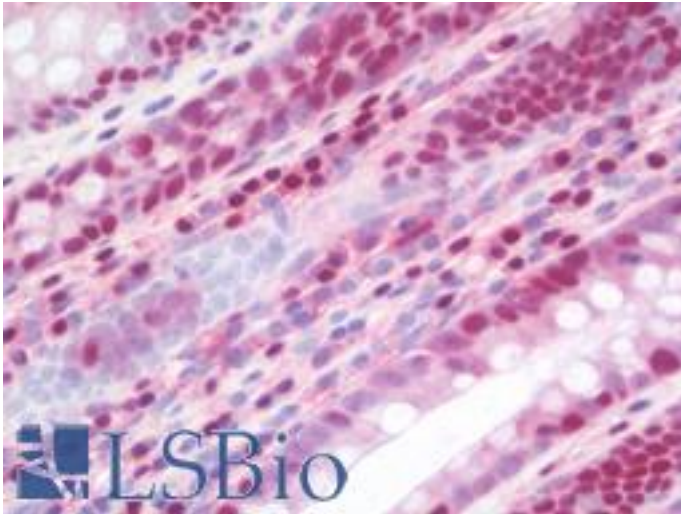


LTA4H / LTA4 Mouse anti-Human Monoclonal (9G8) Antibody - LS-B10264 - LSBio

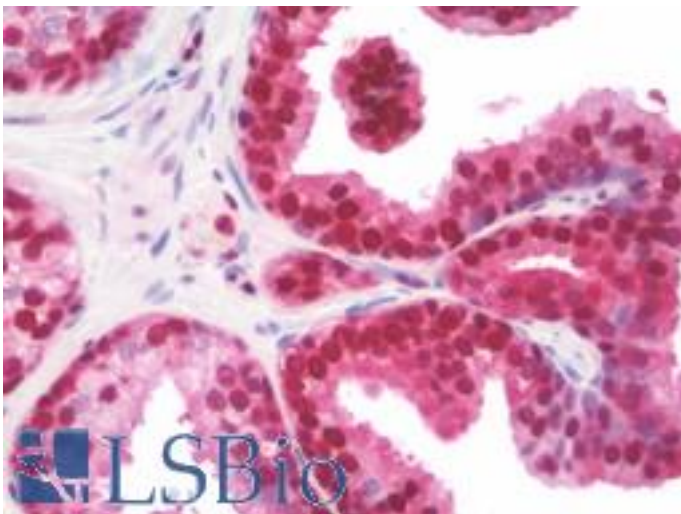
CatalogID:	LS-B10264
Validation:	This antibody replaces catalog number LS-C114737. It has been validated for use in the following assays: IHC-P.
Target:	leukotriene A4 hydrolase (LTA4H)
Synonyms:	LTA4H Antibody, Leukotriene A(4) hydrolase Antibody, Leukotriene A4 hydrolase Antibody, Leukotriene A-4 hydrolase Antibody, LTA-4 hydrolase Antibody, LTA4 Antibody
Family / Subfamily:	Exopeptidase / Metallopeptidase M1
Host	LTA4H antibody was produced in Mouse
Clonality:	Monoclonal
Isotype:	IgG2a
Clone Name:	9G8
Immunogen Species:	LTA4H / LTA4 antibody was raised against Human
Antigen Type:	Recombinant protein
Immunogen:	LTA4H / LTA4 antibody was raised against full length human recombinant protein of human LTA4H (NP_000886) produced in HEK293T cell.
Specificity:	Human LTA4H / LTA4
Reactivity:	Human
Purification:	Protein A/G purified
Presentation:	PBS, pH 7.3, 1% BSA, 50% glycerol, 0.02% sodium azide
Recommended Storage:	Store at -20°C. Minimize freezing and thawing.
Usage Summary:	Concentration: 0.5-1.0 mg/ml (Lot dependent)
Uses:	IHC - Paraffin (10 µg/ml), Immunofluorescence (1:100), Western blot (1:2000), Flow Cytometry (1:100) (Optimal dilution to be determined by the researcher)
Size:	50 µl
Concentration:	0.91 mg/ml

Immunohistochemistry Image:



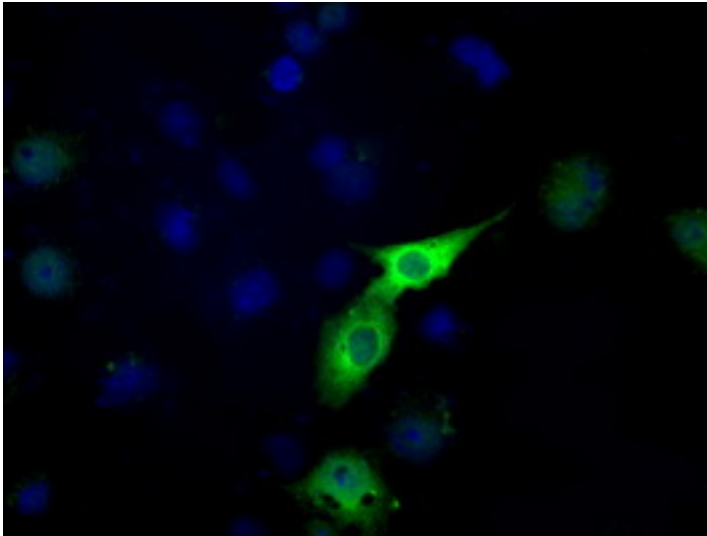
Human Colon: Formalin-Fixed, Paraffin-Embedded (FFPE)

Immunohistochemistry Image:



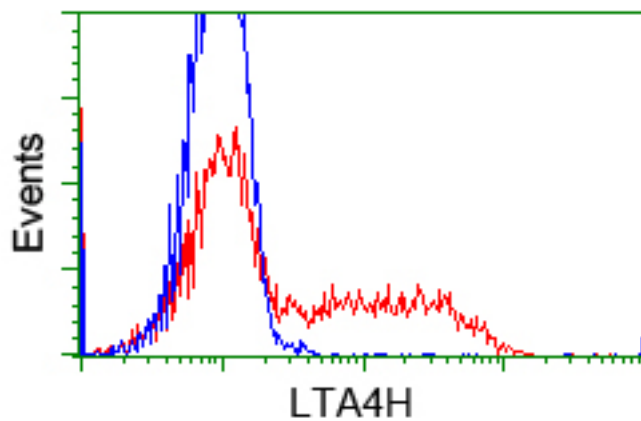
Human Prostate: Formalin-Fixed, Paraffin-Embedded (FFPE)

Immunofluorescence Image:



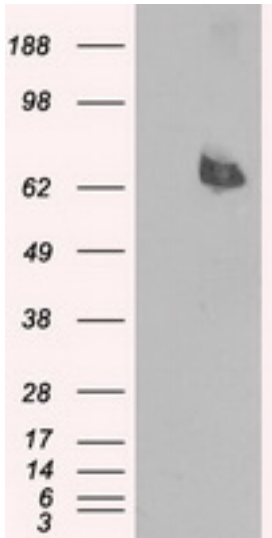
Anti-LTA4H mouse monoclonal antibody immunofluorescent staining of COS7 cells transiently transfected by pCMV6-ENTRY LTA4H.

Flow Cytometry Image:



HEK293T cells transfected with either pCMV6-ENTRY LTA4H (Red) or empty vector control plasmid (Blue) were immunostained with anti-LTA4H mouse monoclonal, and then analyzed by flow cytometry.

Western Blot Image:



HEK293T cells were transfected with the pCMV6-ENTRY control (Left lane) or pCMV6-ENTRY LTA4H (Right lane) cDNA for 48 hrs and lysed. Equivalent amounts of cell lysates (5 ug per lane) were separated by SDS-PAGE and immunoblotted with anti-LTA4H.

Requested From:

Japan

Laboratory Reagent For In Vitro Research Use Only

Not for resale without prior written consent from LifeSpan BioSciences, Inc.

Created on 9/23/2014

© 2014 LifeSpan BioSciences