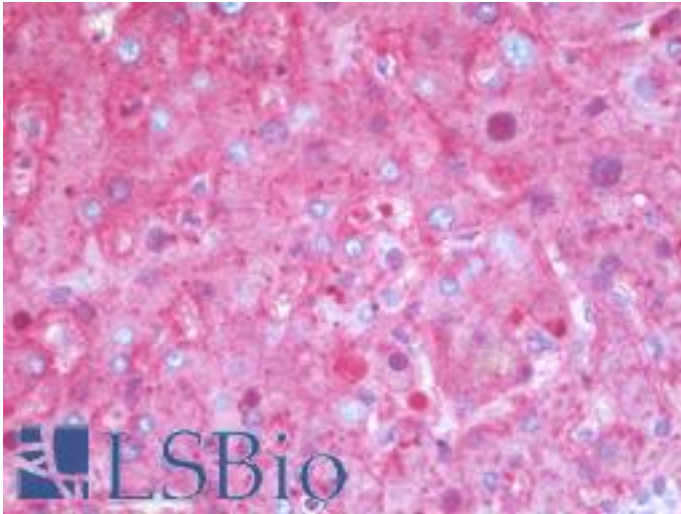


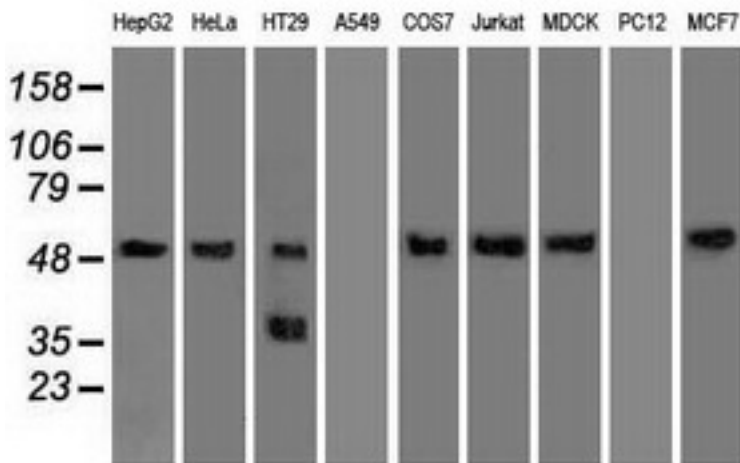
SERPINA1 / Alpha 1 Antitrypsin Mouse anti-Human Monoclonal (11G2) Antibody - LS-B10262 - LSBio	
<b>CatalogID:</b>	LS-B10262
<b>Validation:</b>	This antibody replaces catalog number LS-C114486. It has been validated for use in the following assays: IHC-P.
<b>Target:</b>	serpin peptidase inhibitor, clade A (alpha-1 antiproteinase, antitrypsin), member 1 (SERPINA1)
<b>Synonyms:</b>	SERPINA1 Antibody, A1A Antibody, A1AT Antibody, AAT Antibody, Alpha 1 Antitrypsin Antibody, Alpha-1 protease inhibitor Antibody, Alpha-1-antiproteinase Antibody, Alpha-1-antitrypsin Antibody, Alpha1AT Antibody, PRO2275 Antibody, Alpha-1-antitrypsin null Antibody, PI1 Antibody, Serpin A1 Antibody
<b>Host</b>	SERPINA1 antibody was produced in Mouse
<b>Clonality:</b>	Monoclonal
<b>Isotype:</b>	IgG1
<b>Clone Name:</b>	11G2
<b>Immunogen Species:</b>	SERPINA1 / Alpha 1 Antitrypsin antibody was raised against Human
<b>Antigen Type:</b>	Transfected Cells
<b>Immunogen:</b>	SERPINA1 / Alpha 1 Antitrypsin antibody was raised against protein expressed in 293T cell transfected with human SERPINA1 expression vector.
<b>Specificity:</b>	Human SERPINA1 / Alpha 1 Antitrypsin
<b>Reactivity:</b>	Human, Monkey, Dog
<b>Purification:</b>	Protein A/G purified
<b>Presentation:</b>	PBS, pH 7.3, 1% BSA, 50% glycerol, 0.02% sodium azide
<b>Recommended Storage:</b>	Store at -20°C. Minimize freezing and thawing.
<b>Usage Summary:</b>	Concentration: 0.5-1.0 mg/ml (Lot dependent)
<b>Uses:</b>	IHC - Paraffin (10 µg/ml), Western blot (1:1000 - 1:2000), Immunoprecipitation (Optimal dilution to be determined by the researcher)
<b>Size:</b>	50 µl
<b>Concentration:</b>	1.2 mg/ml

**Immunohistochemistry Image:**



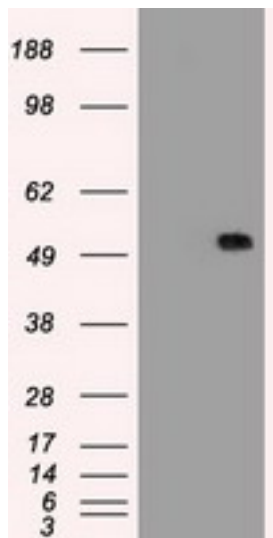
Human Liver: Formalin-Fixed, Paraffin-Embedded (FFPE)

**Western Blot Image:**



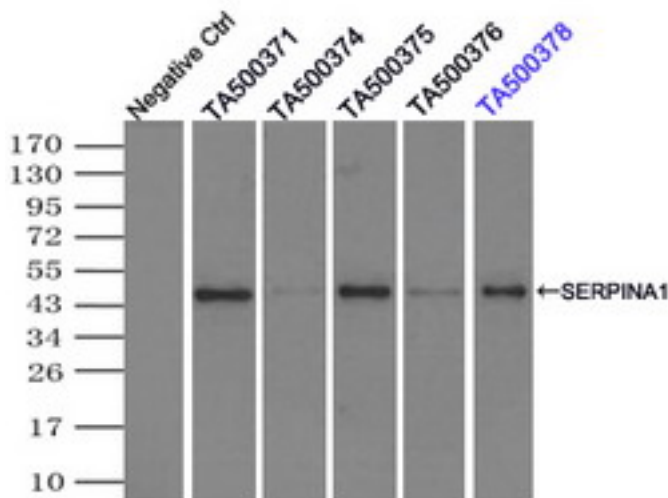
Western blot of extracts (35 ug) from 9 different cell lines by using anti-SERPINA1 monoclonal antibody.

### Western Blot Image:



HEK293T cells were transfected with the pCMV6-ENTRY control (Left lane) or pCMV6-ENTRY SERPINA1 (Right lane) cDNA for 48 hrs and lysed. Equivalent amounts of cell lysates (5 ug per lane) were separated by SDS-PAGE and immunoblotted with anti-SERPINA1.

### Immunoprecipitation Image:



Immunoprecipitation(IP) of SERPINA1 by using monoclonal anti-SERPINA1 antibodies (Negative control: IP without adding anti-SERPINA1 antibody.). For each experiment, 500ul of DDK tagged SERPINA1 overexpression lysates (at 1:5 dilution with HEK293T lysate), 2 ug of anti-SERPINA1 antibody and 20ul (0.1 mg) of goat anti-mouse conjugated magnetic beads were mixed and incubated overnight. After extensive wash to remove any non-specific binding, the immuno-precipitated products were analyzed with rabbit anti-DDK polyclonal antibody.

Requested From:

Japan

Laboratory Reagent For In Vitro Research Use Only

Not for resale without prior written consent from LifeSpan BioSciences, Inc.

Created on 9/23/2014

© 2014 LifeSpan BioSciences