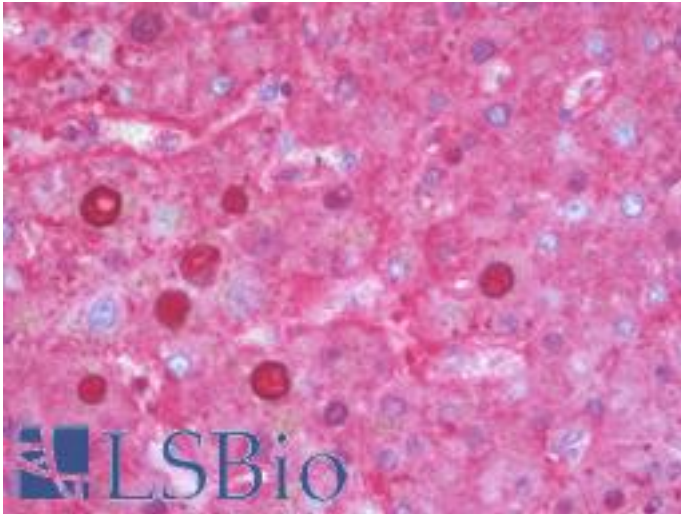


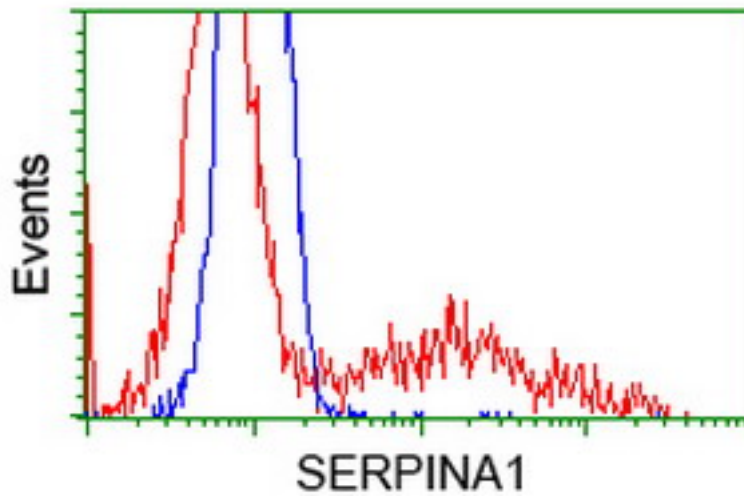
SERPINA1 / Alpha 1 Antitrypsin Mouse anti-Human Monoclonal (9A1) Antibody - LS-B10259 - LSBio	
CatalogID:	LS-B10259
Validation:	This antibody replaces catalog number LS-C114482. It has been validated for use in the following assays: IHC-P.
Target:	serpin peptidase inhibitor, clade A (alpha-1 antiproteinase, antitrypsin), member 1 (SERPINA1)
Synonyms:	SERPINA1 Antibody, A1A Antibody, A1AT Antibody, AAT Antibody, Alpha 1 Antitrypsin Antibody, Alpha-1 protease inhibitor Antibody, Alpha-1-antiproteinase Antibody, Alpha-1-antitrypsin Antibody, Alpha1AT Antibody, PRO2275 Antibody, Alpha-1-antitrypsin null Antibody, PI1 Antibody, Serpin A1 Antibody
Host	SERPINA1 antibody was produced in Mouse
Clonality:	Monoclonal
Isotype:	IgG1
Clone Name:	9A1
Immunogen Species:	SERPINA1 / Alpha 1 Antitrypsin antibody was raised against Human
Antigen Type:	Transfected Cells
Immunogen:	SERPINA1 / Alpha 1 Antitrypsin antibody was raised against protein expressed in 293T cell transfected with human SERPINA1 expression vector.
Specificity:	Human SERPINA1 / Alpha 1 Antitrypsin
Reactivity:	Human, Monkey, Dog
Purification:	Protein A/G purified
Presentation:	PBS, pH 7.3, 1% BSA, 50% glycerol, 0.02% sodium azide
Recommended Storage:	Store at -20°C. Minimize freezing and thawing.
Usage Summary:	Concentration: 0.5-1.0 mg/ml (Lot dependent)
Uses:	IHC - Paraffin (10 µg/ml), Western blot (1:500 - 1:1000), Immunoprecipitation, Flow Cytometry (1:100) (Optimal dilution to be determined by the researcher)
Size:	50 µl
Concentration:	0.65 mg/ml

Immunohistochemistry Image:



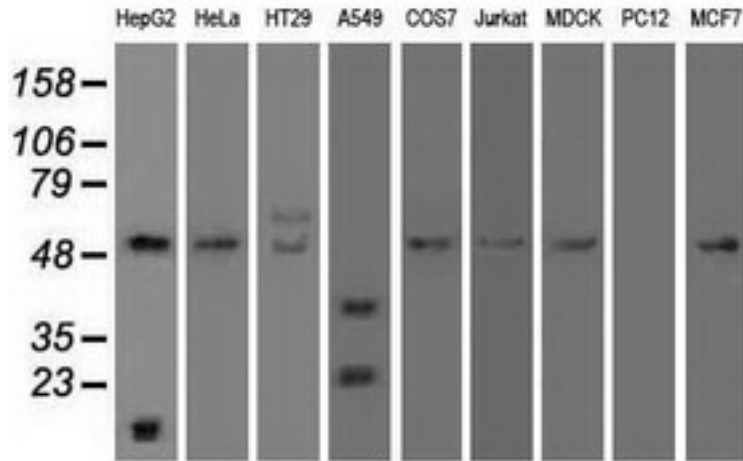
Human Liver: Formalin-Fixed, Paraffin-Embedded (FFPE)

Flow Cytometry Image:



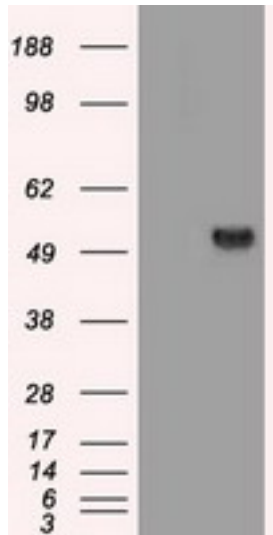
HEK293T cells transfected with either overexpress plasmid (Red) or empty vector control plasmid (Blue) were immunostained by anti-SERPINA1 antibody, and then analyzed by flow cytometry.

Western Blot Image:



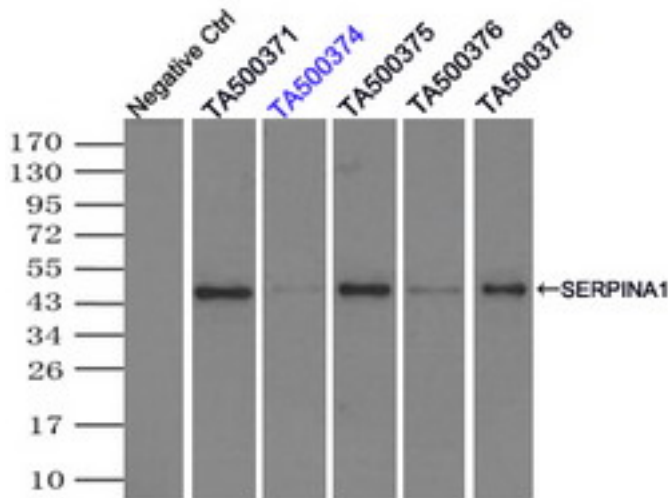
Western blot of extracts (35 ug) from 9 different cell lines by using anti-SERPINA1 monoclonal antibody.

Western Blot Image:



HEK293T cells were transfected with the pCMV6-ENTRY control (Left lane) or pCMV6-ENTRY SERPINA1 (Right lane) cDNA for 48 hrs and lysed. Equivalent amounts of cell lysates (5 ug per lane) were separated by SDS-PAGE and immunoblotted with anti-SERPINA1.

Immunoprecipitation Image:



Immunoprecipitation(IP) of SERPINA1 by using TrueMab monoclonal anti-SERPINA1 antibodies (Negative control: IP without adding anti-SERPINA1 antibody.). For each experiment, 500ul of DDK tagged SERPINA1 overexpression lysates (at 1:5 dilution with HEK293T lysate), 2ug of anti-SERPINA1 antibody and 20ul (0.1mg) of goat anti-mouse conjugated magnetic beads were mixed and incubated overnight. After extensive wash to remove any non-specific binding, the immuno-precipitated products were analyzed with rabbit anti-DDK polyclonal antibody.

Requested From:

Japan

Laboratory Reagent For In Vitro Research Use Only

Not for resale without prior written consent from LifeSpan BioSciences, Inc.

Created on 9/23/2014

© 2014 LifeSpan BioSciences