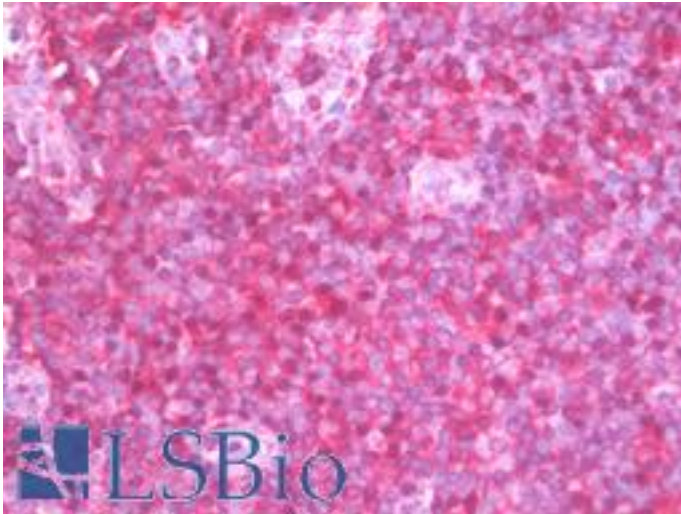


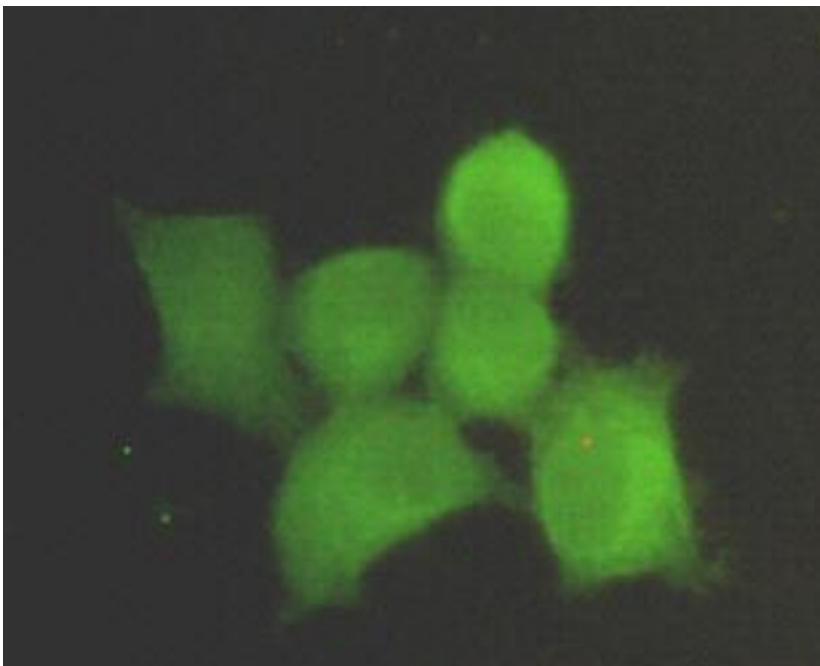
PPP1CA / PP1-Alpha Mouse anti-Human Monoclonal (N-Terminus) Antibody - LS-B10253 - LSBio	
CatalogID:	LS-B10253
Validation:	This antibody replaces catalog number LS-C178337. It has been validated for use in the following assays: IHC-P.
Target:	protein phosphatase 1, catalytic subunit, alpha isozyme (PPP1CA)
Synonyms:	PPP1CA Antibody, PP-1A Antibody, pp1C alpha Antibody, PP1 alpha Antibody, PP1-Alpha Antibody, PP1alpha Antibody, PPP1A Antibody, Protein phosphatase 1 alpha Antibody
Family / Subfamily:	Protein Phosphatase / PP1
Host	PPP1CA antibody was produced in Mouse
Clonality:	Monoclonal
Immunogen Species:	PPP1CA / PP1-Alpha antibody was raised against Human
Antigen Type:	Synthetic peptide
Immunogen:	PPP1CA / PP1-Alpha antibody was raised against synthetic peptide from N-Terminus of human PPP1CA / PP1-Alpha
Specificity:	Human PPP1CA / PP1-Alpha. This antibody detects endogenous levels of PP1A (N-terminus) and does not cross-react with related proteins
Epitope:	N-Terminus
Reactivity:	Human
Purification:	Affinity purified
Presentation:	0.1M Tris-Glycine, pH 7.4, 150 mM NaCl, 0.2% sodium azide, 50%,glycerol
Recommended Storage:	Store at 4°C short term. Aliquot and store at -20°C long term. Avoid freeze-thaw cycles.
Uses:	IHC - Paraffin (1:50), ICC (1:200 - 1:400), Immunofluorescence, Western blot (1:1000) (Optimal dilution to be determined by the researcher)
Size:	100 µl
Concentration:	1 mg/ml

Immunohistochemistry Image:



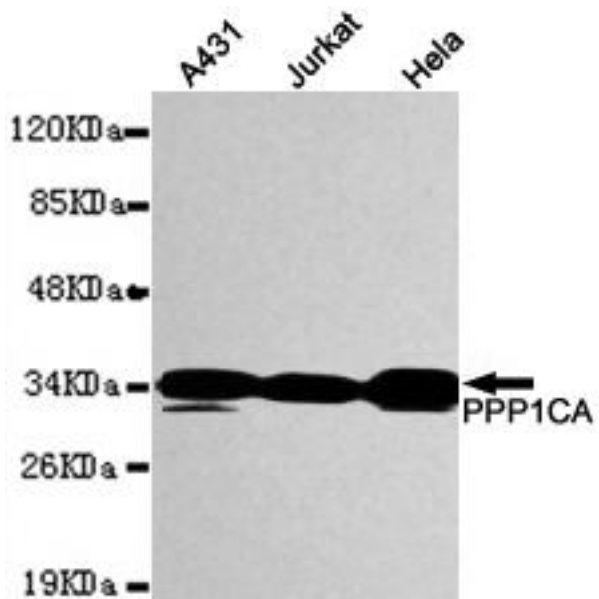
Human Tonsil: Formalin-Fixed, Paraffin-Embedded (FFPE)

Immunofluorescence Image:



Immunocytochemistry stain of HeLa using PPP1CA antibody (1:300).

Western Blot Image:



Western blot detection of PPP1CA in MCF7, K562, HeLa, HEPG2 & Jurkat Whole cell lysates using PPP1CA antibody (1:1000 diluted).

Requested From:

Japan

Laboratory Reagent For In Vitro Research Use Only

Not for resale without prior written consent from LifeSpan BioSciences, Inc.

Created on 9/23/2014

© 2014 LifeSpan BioSciences